



Barnett Wood Lane, Ashted KT21 2LW

SKINNERS LANE

**V&H**  
HOMES

Your local property specialist

Barnett Wood Lane  
Ashted KT21 2LW

*V&H Homes brings to the market a unique three double bedroom split level apartment, arranged over two floors with both character and a modern finish.*

Split Level Apartment

Over 115 SQ M of Accommodation

Three Double Bedrooms

Two Bathrooms

Open Plan Kitchen/Dining/Living Room

Utility Room

Stunning Views

Communal Garden

Two Allocated Parking Spaces

EPC Rating E





This spacious apartment offers stunning views and a bright, open plan kitchen/dining/living room with an attractive box bay window.

The kitchen area is equipped with a contemporary range of fitted cupboards and integrated appliances and a separate utility room. In addition, there is a modern three piece family bathroom.

Stairs lead up to three spacious double bedrooms, with bedroom one benefitting from a ensuite shower room.

Outside of the property is a communal southerly facing garden with each apartment having an individual storage shed. This apartment comes with two allocated car parking spaces, visitor parking and the convenience of an entry phone system.



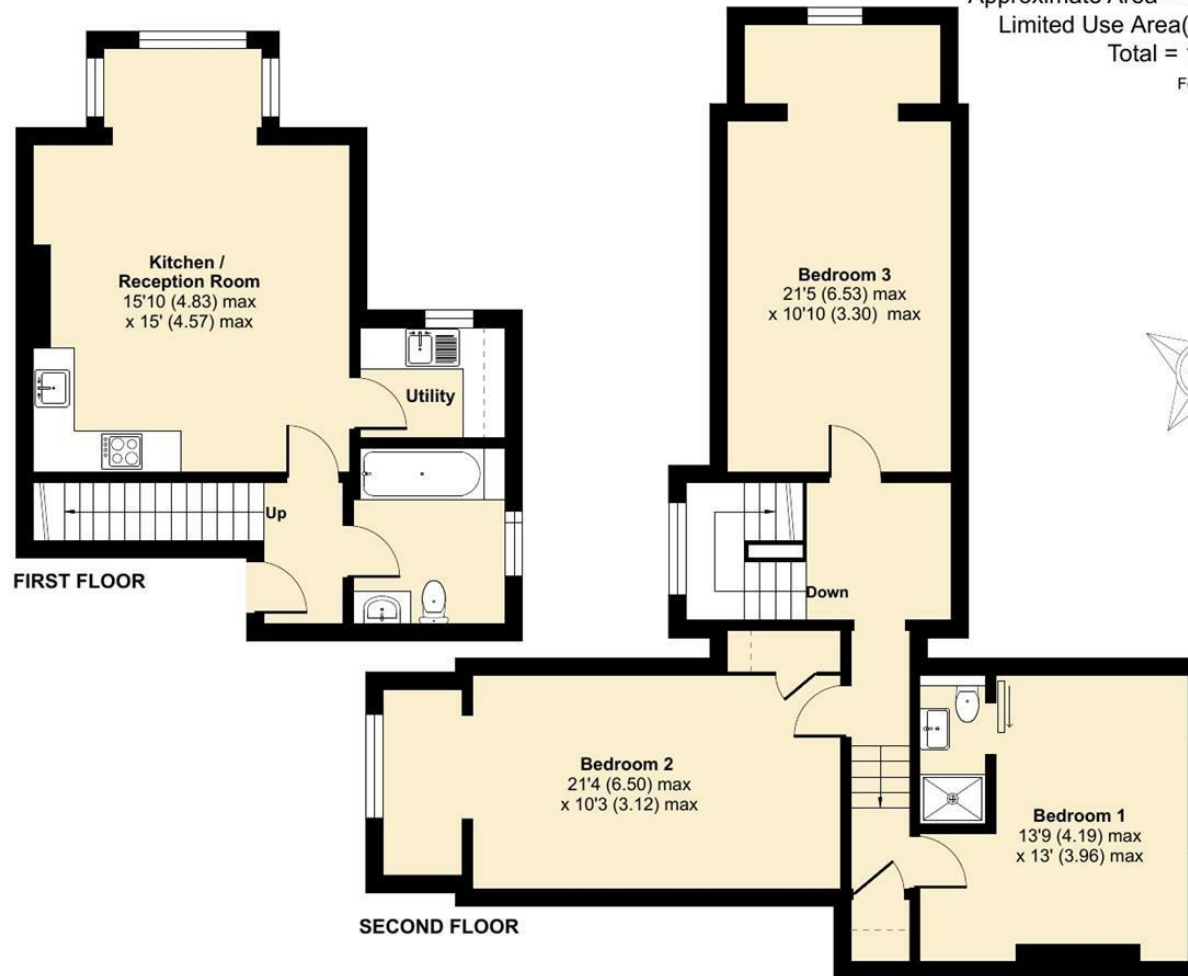
# Barnett Wood Lane, Ashted, KT21

Approximate Area = 1239 sq ft / 115.1 sq m

Limited Use Area(s) = 12 sq ft / 1.1 sq m

Total = 1251 sq ft / 116.2 sq m

For identification only - Not to scale



Floor plan produced in accordance with RICS Property Measurement Standards incorporating International Property Measurement Standards (IPMS2 Residential). © nchecon 2024. Produced for V&H Homes. REF: 1092357



**V&H Homes**

01372 221 678

sales@vhomes.co.uk

www.vhhomes.co.uk



Your local property specialist