



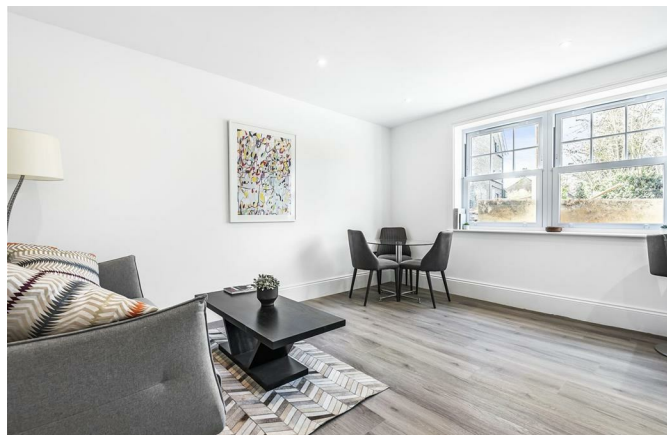
88 Woodfield Lane, Ashted KT21 2EL

V&H
HOMES

Your local property specialist

88 Woodfield Lane
Ashted KT21 2EL

Executive Ground Floor Apartment
Contemporary Kitchen with Breakfast Bar
One Bedroom
Luxury Bathroom
Fibre Optic Broadband
260m From Ashted Mainline Station
Main Bus Route to Epsom
Council Tax Band C
High EPC Rating B

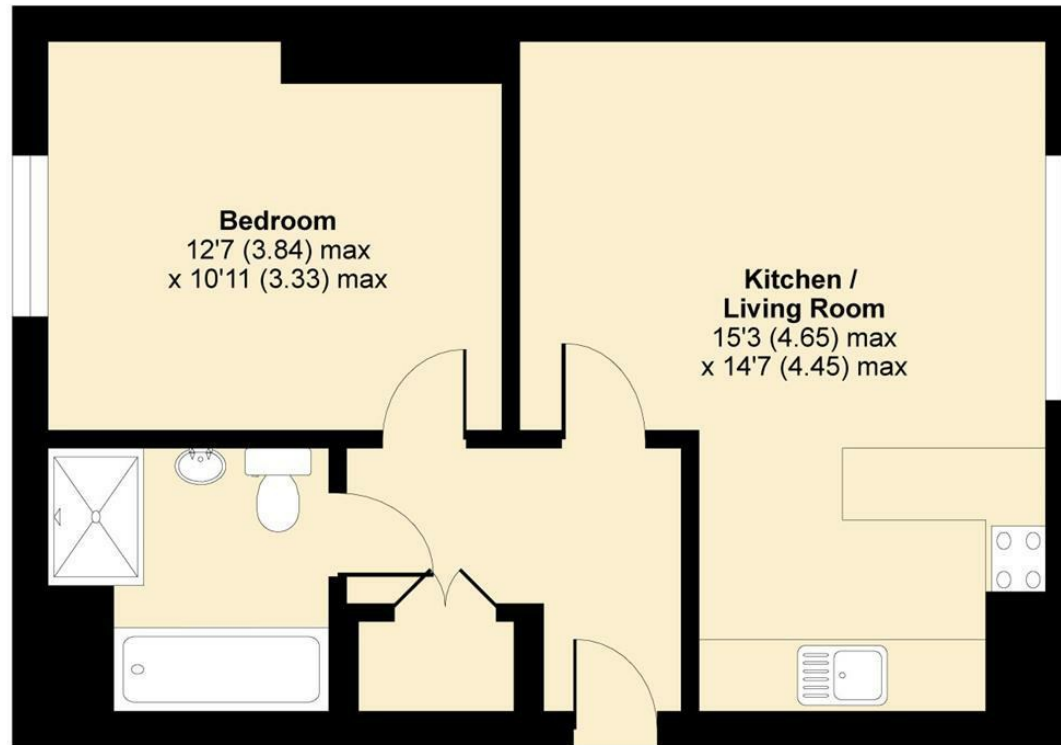




Woodfield Lane, Ashted, KT21

Approximate Area = 519 sq ft / 48.2 sq m

For identification only - Not to scale



GROUND FLOOR



Floor plan produced in accordance with RICS Property Measurement Standards incorporating International Property Measurement Standards (IPMS2 Residential). © n'ichecom 2021. Produced for V&H Homes. REF: 685690.

V&H Homes

01372 221 678

sales@vhhomes.co.uk

www.vhhomes.co.uk

rightmove

Zoopla

PrimeLocation.com



hometrack

**V&H
HOMES**

Your local property specialist