



COURT FARM GARDENS

UPPER COURT
ROAD

Manor Green Road, Epsom KT19 8SL

V&H
HOMES

Your local property specialist

Manor Green Road Epsom KT19 8SL

A completely renovated two double bedroom first-floor maisonette with private garden and communal grounds, ideally located within walking distance of Epsom town centre and the mainline station.

First Floor Maisonette

Completely Renovated

Private Garden

Two Double Bedrooms

Lounge/Dining Room

Fully Fitted Kitchen

Stylish Bathroom

Communal Grounds

Long Lease

EPC Rating C





Finished to a high standard throughout, this superb home offers a spacious lounge/dining room, a fully fitted modern kitchen, two generous double bedrooms, and a beautifully restyled classic bathroom.

Externally, well-maintained communal grounds lead via external steps to the property's private front door. A particular highlight is the private garden, accessed through its own gated entrance on Manor Green Road.

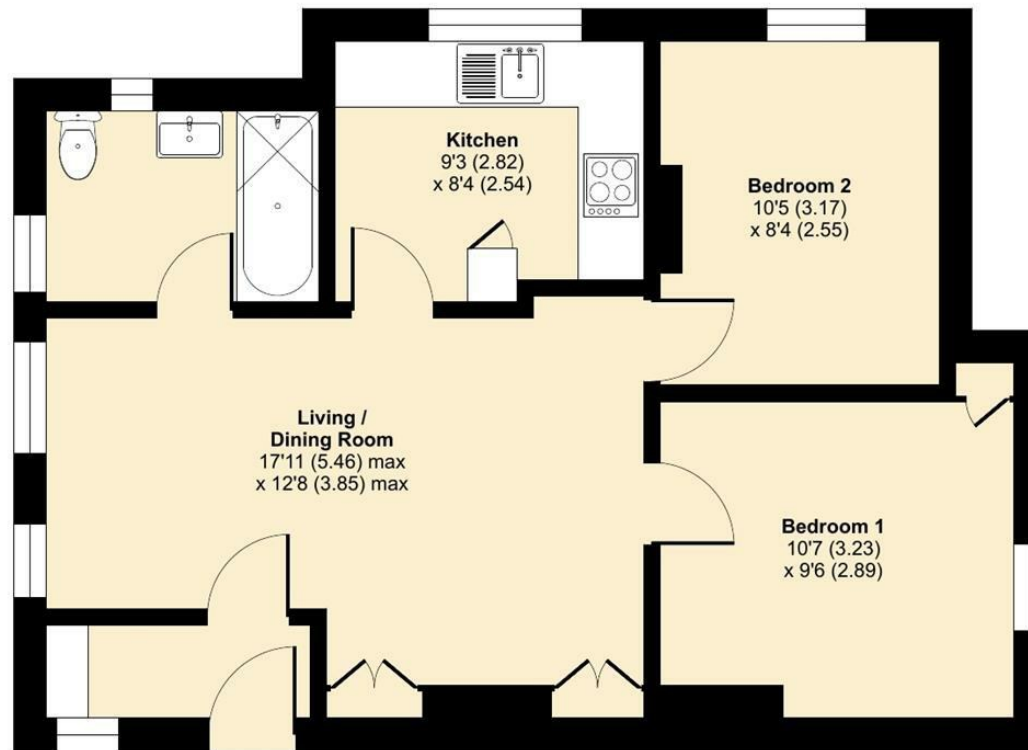
Offered for sale with no onward chain, a long lease, and low outgoings, this exceptional maisonette is ready to move straight into. Perfectly positioned close to Epsom's thriving and eclectic town centre, the property also benefits from excellent transport links.



Manor Green Road, Epsom, KT19

Approximate Area = 548 sq ft / 50.9 sq m

For identification only - Not to scale



FIRST FLOOR



Floor plan produced in accordance with RICS Property Measurement 2nd Edition, Incorporating International Property Measurement Standards (IPMS2 Residential). © n/checom 2026. Produced for V&H Homes. REF: 1400626



V&H Homes

01372 221 678

sales@vhhomes.co.uk

www.vhhomes.co.uk

rightmove

Zoopla

PrimeLocation.com



hometrack

V&H HOMES

Your local property specialist