



Greville Park Road, Ashted KT21 2QN

**V&H**  
HOMES

Your local property specialist



## Greville Park Road Ashted KT21 2QN

*Centrally located close to Ashted High Street shops and public transport is this one bedroom ground floor apartment suitable for the active and retired over 55's. The development has communal gardens, lounge and off street parking spaces plus a House Manager. Other benefits include a guest suite and laundry room.*

Ground Floor Apartment

One Double Bedroom

Fitted Kitchen

Walk In Shower Room

Double Aspect Lounge/Diner

Communal Grounds

Off Street Parking

Visitor Parking

Central Ashted Village Location

EPC Rating C



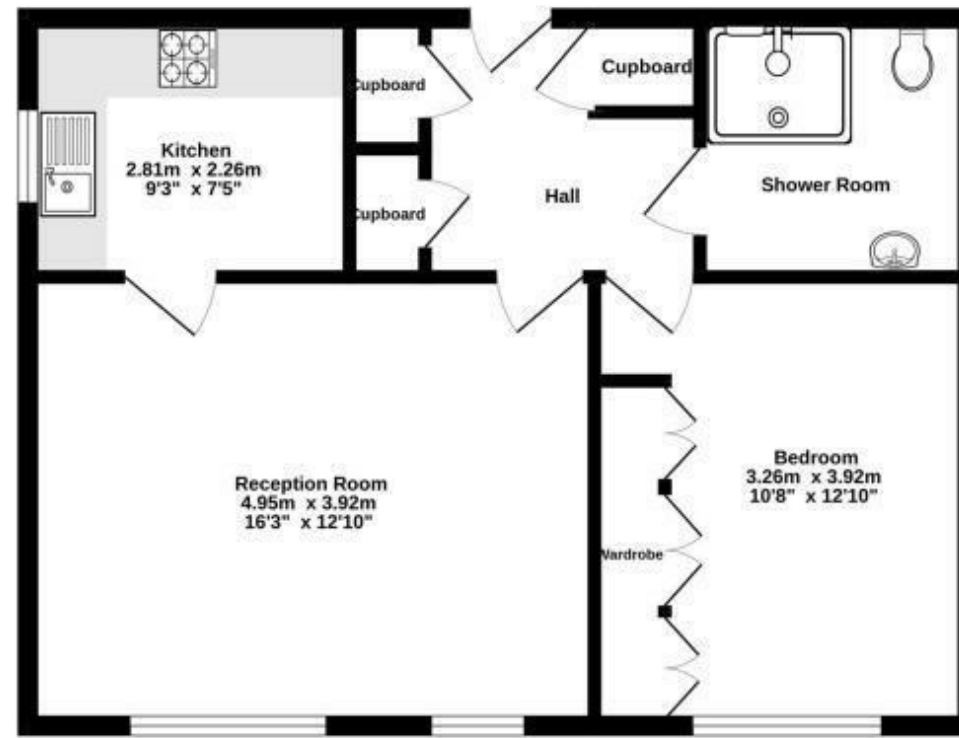




The apartment entrance hall has built in storage cupboards leading to a double bedroom with built in wardrobes, fitted kitchen, walk in shower room and a bright double aspect lounge. Viewings are by appointment at your convenience.



Ground Floor  
50.7 sq.m. (546 sq.ft.) approx.



TOTAL FLOOR AREA: 50.7 sq.m. (546 sq.ft.) approx.

Whilst every attempt has been made to ensure the accuracy of the floorplan contained here, measurements of doors, windows, rooms and any other items are approximate and no responsibility is taken for any error, omission or misstatement. This plan is for illustrative purposes only and should be used as such by any prospective purchaser. The services, systems and appliances shown have not been tested and no guarantee as to their operability or efficiency can be given.  
Made with Metropac 02023

**V&H Homes**

01372 221 678

[sales@vhhomes.co.uk](mailto:sales@vhhomes.co.uk)

[www.vhhomes.co.uk](http://www.vhhomes.co.uk)

**rightmove**

**Zoopla**

**PrimeLocation.com**

**The Property Ombudsman**

**hometrack**

**V&H HOMES**

Your local property specialist