



OLD BARN  
COURT  
64

Woodfield Lane, Ashted KT21 2BS

**V&H**  
&  
HOMES

Your local property specialist



## Woodfield Lane Ashted KT21 2BS

*Located on the first floor, this spacious 74sqm two double bedroom first floor apartment is centrally located close to Ashted Village, Ashted Common and Ashted mainline train station.*

Spacious First Floor Apartment

Two Double Bedrooms

Modern Kitchen

Excellent Condition

First Floor

Communal Garden

Close To Station & Shops

Central Village location

EPC Rating C

Council Tax Band D





The apartment comprises of a good-sized hallway with two useful built-in storage cupboards and offers a bright dual aspect lounge/diner and a well-equipped modern kitchen fitted with a breakfast bar.

In addition, there are two generous size double bedrooms and a contemporary three-piece family bathroom.

Externally this apartment benefits from a shared communal garden.

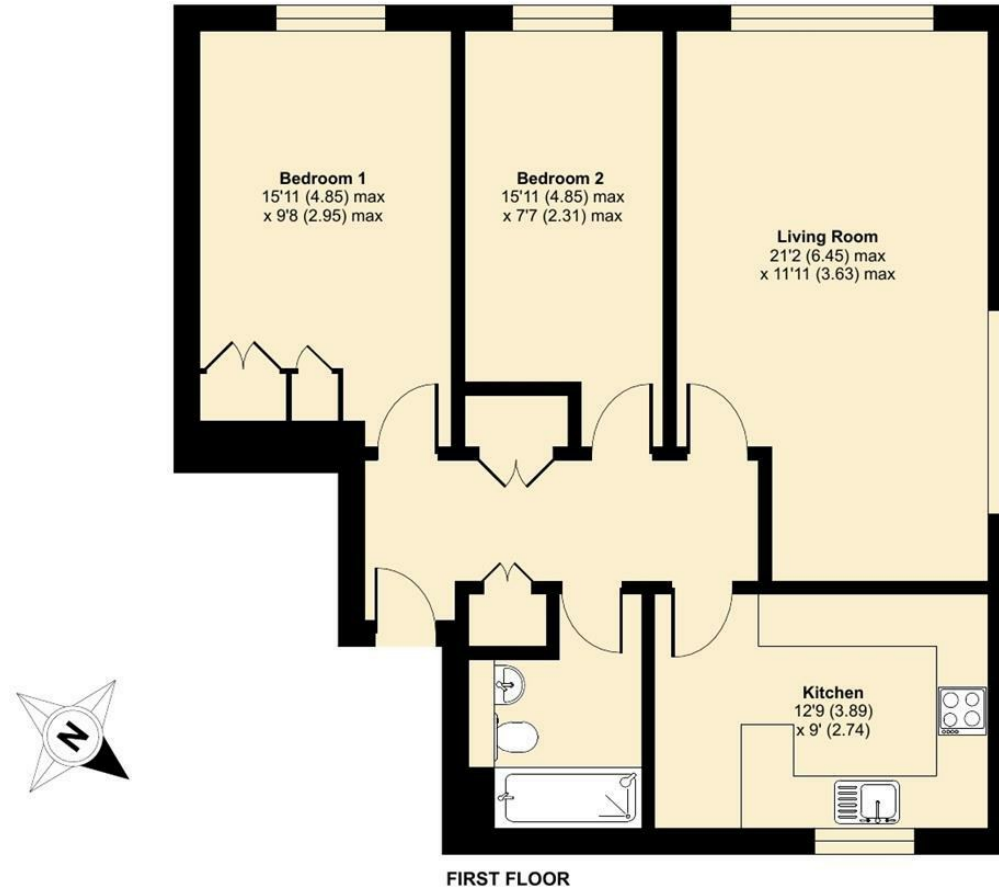




# Woodfield Lane, Ashted, KT21

Approximate Area = 799 sq ft / 74.2 sq m

For identification only - Not to scale



Floor plan produced in accordance with RICS Property Measurement Standards incorporating International Property Measurement Standards (IPMS2 Residential). © nchecon 2022. Produced for V&H Homes. REF: 925500



## V&H Homes

01372 221 678

[sales@vhhomes.co.uk](mailto:sales@vhhomes.co.uk)

[www.vhhomes.co.uk](http://www.vhhomes.co.uk)



Your local property specialist