



The Murreys, Ashted

The Murreys

Ashted

This impressive four bedroom terraced house offers contemporary living arranged over three floors and is in a peaceful cul-de-sac in easy reach of local amenities, schools and transport links.

Council Tax band: F

Tenure: Freehold

- Four Bedrooms
- Spacious Kitchen / Diner
- Contemporary Living
- Over 197 sq.m of Accommodation
- Two Bathrooms
- Arranged Over Three Floors
- Cul-de-sac Location
- Utility Room
- Study





28 The Murreys

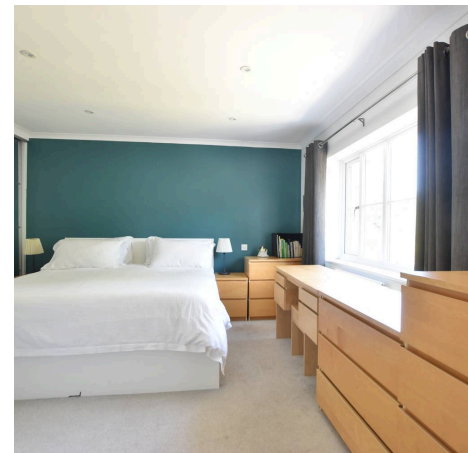
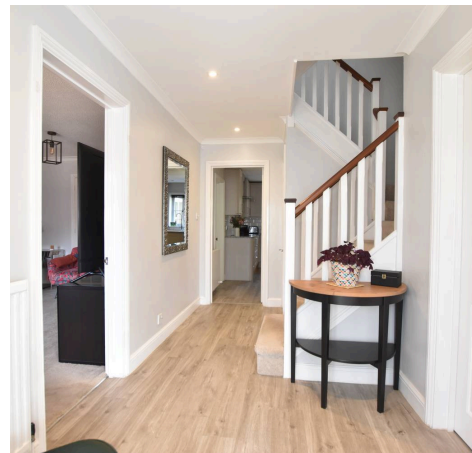
This impressive four bedroom terraced house offers contemporary living arranged over three spacious floors and provides over 197 square metres of beautifully presented accommodation.

Upon entering, a generous entrance hall leads through to the heart of the home – a spacious kitchen and dining area. The kitchen is thoughtfully designed with modern fittings and ample storage, while the adjoining utility room ensures that household tasks remain neatly tucked away.

The main living area is bright and inviting, offering plenty of space for relaxation and socialising. A dedicated study provides an ideal environment for working from home, catering to the demands of modern lifestyles.

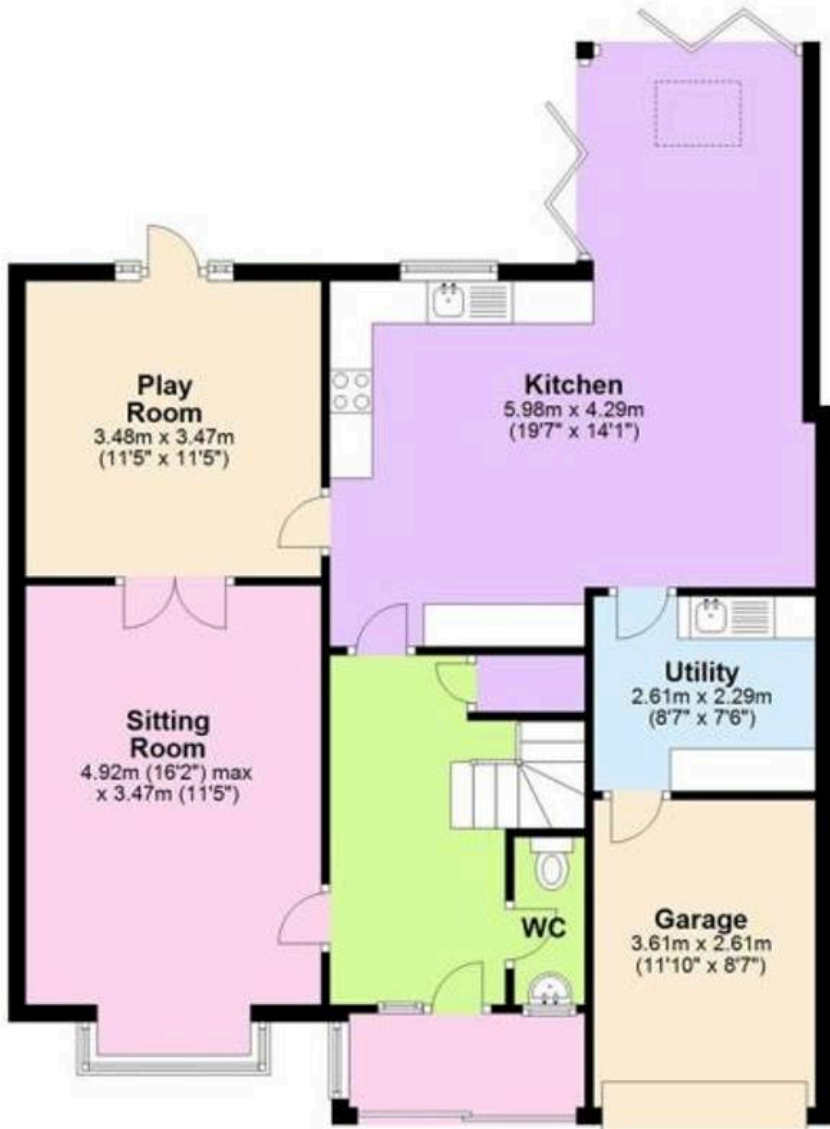
Upstairs, the property boasts four well-proportioned bedrooms, each finished to a high standard. The principal bedroom features generous proportions and a contemporary en-suite bathroom. A second bathroom serves the remaining bedrooms, ensuring comfort and convenience.

The layout is particularly well-suited to modern family living, with distinct areas for dining, working, and relaxing, all arranged to maximise privacy and comfort. The quiet cul-de-sac location provides a peaceful setting while remaining within easy reach of local amenities, schools, and transport links.



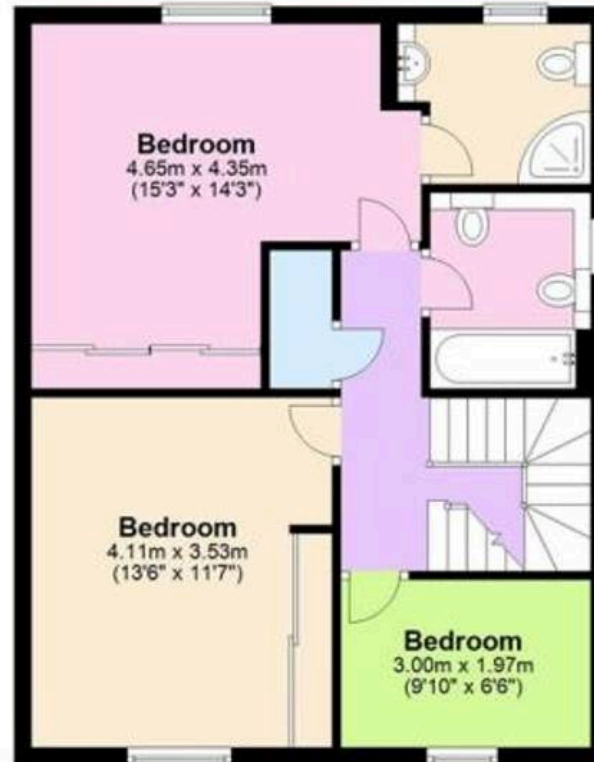
Ground Floor

Approx. 92.1 sq. metres (991.3 sq. feet)



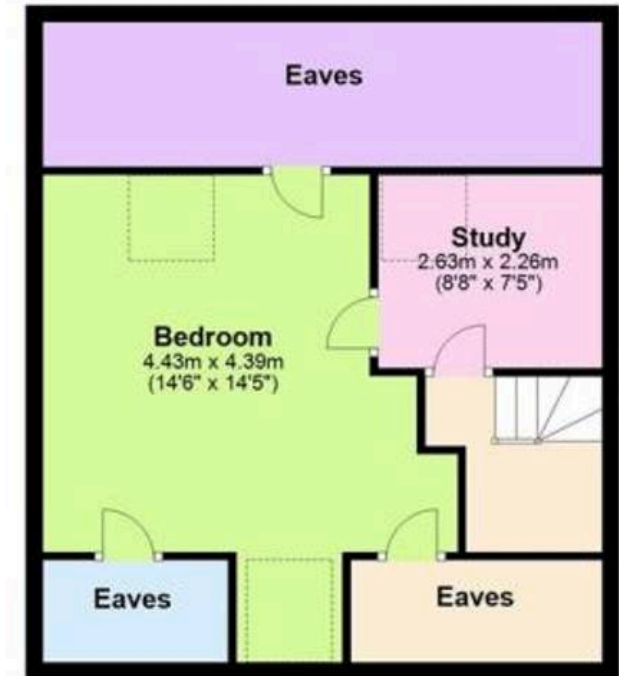
First Floor

Approx. 55.8 sq. metres (600.7 sq. feet)



Second Floor

Approx. 49.3 sq. metres (530.7 sq. feet)



Total area: approx. 197.2 sq. metres (2122.8 sq. feet)

All measurements are approximate.
Plan produced using PlanUp.