



Forest Way, Ashted KT21 1JN

V&H
HOMES

Your local property specialist

Forest Way Ashted KT21 1JN

A well presented four bedroom detached family home situated in a sought-after location, within easy reach of Ashted station and in the catchment of excellent local schools including The Greville Primary School and Rosebery Secondary School, and close to The City of London Freeman's School, Downsend, Therfield and St Andrew's. The property boasts modern features while retaining a warm family feel.

Detached Family Home

Four Double Bedrooms

Two Bathrooms

Large Kitchen/Dining Room

Three Reception Rooms

Utility Room

Garage and Off Road Parking

0.8 miles to Ashted Station

1.2 miles to Rosebery School

EPC Rating: C

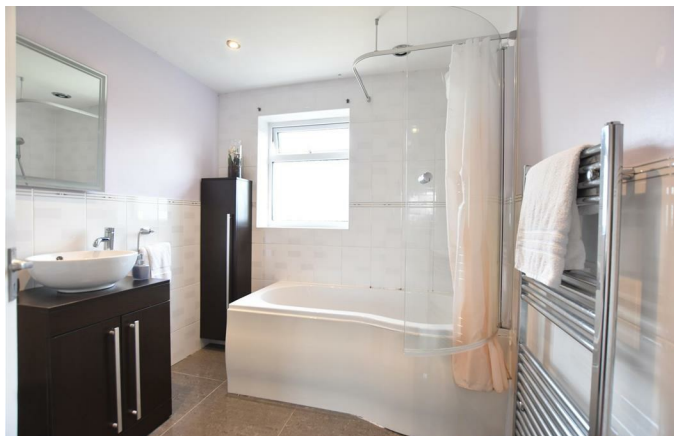




The ground floor has two reception rooms either side of the generous hallway. There is a large open-plan living room with a fireplace, perfect for family gatherings. The contemporary style kitchen has an array of fitted units and integrated appliances, with a spacious breakfast area and door out to the well maintained garden. It leads through to a well proportioned dining area boasting garden views and access via sliding doors. Downstairs also offers a utility, a WC and a separate office.

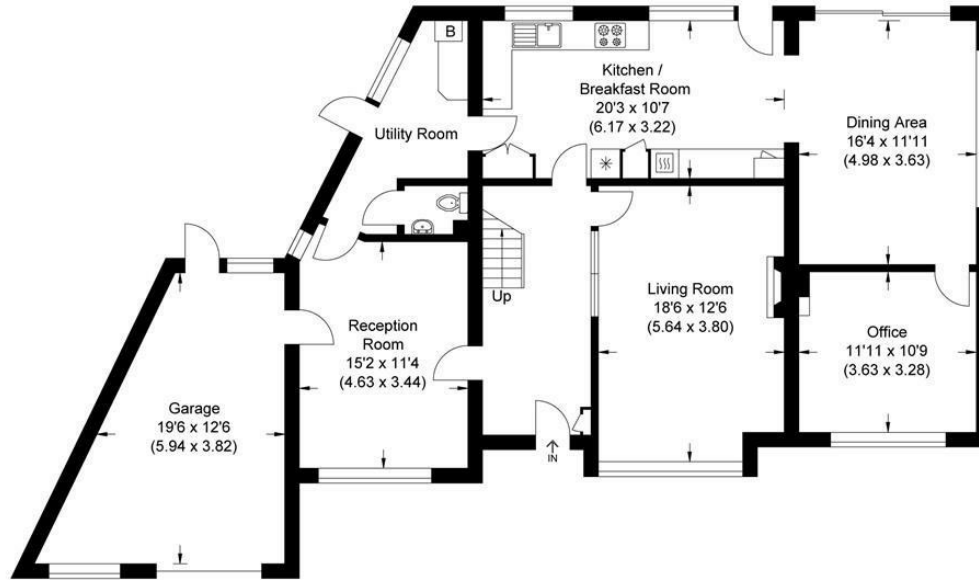
To the first floor the landing leads to four bright and spacious double bedrooms. There is a family bathroom and separate shower room.

The secluded rear garden is a good size, mainly laid to lawn with an attractive patio area. To the front, there is a large front garden laid to lawn and plenty of driveway parking in front of the garage.

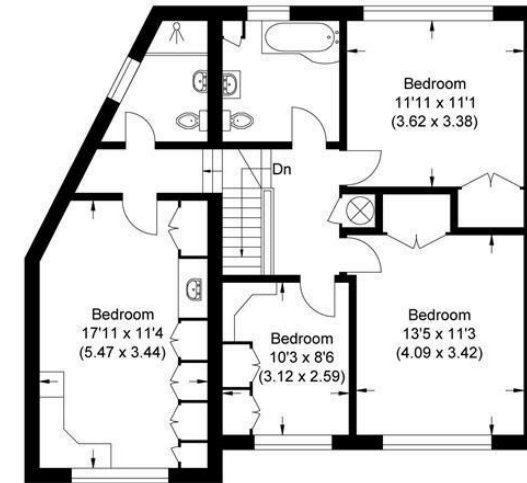




Approximate Gross Internal Area
215.80 sq m / 2322.85 sq ft
(Includes Garage)
Garage 21.88 sq m / 235.51 sq ft



Ground Floor



First Floor

Illustration for identification purposes only, measurements are approximate, not to scale.

V&H Homes

01372 221 678

sales@vhomes.co.uk

www.vhomes.co.uk

