



Ottways Lane, Ashted KT21 2PJ

V&H
HOMES

Your local property specialist

Ottways Lane Ashted KT21 2PJ

An attractive and substantial four / five bedroom family home offering 2,396 sq. ft of accommodation and located in the highly desirable Lanes area of Ashted. The house was rebuilt 14 years ago and boasts ample and versatile accommodation.

Four / Five Bedrooms

Three Bathrooms

2,396 Sq Ft

Lanes Area of Ashted

Substantial Open Plan Kitchen / Dining Room

Bold Corner Plot with Wide Frontage

Double Garage

Versatile Accommodation

Utility Room & Cloakroom

60 ft by 50 ft Garden

The house is a 20 minute walk from Leatherhead and Ashted stations which offer trains to London Bridge, Victoria & Waterloo in approximately 40 minutes. All Ashted amenities within The Street are a short walk away, as is the Leatherhead Swan Centre. There is also a





On entering the house via a large and welcoming entrance hall, there is a spacious and bright dual aspect living room with fireplace and French doors to the garden. The expansive and bright open plan kitchen / dining room benefits from a range of built in appliances, excellent storage, a TV area and a utility room. The property benefits from an additional versatile reception room, which is currently used as a playroom. The ground floor of this superb detached home also provides a study and a useful cloakroom / WC.

To the first floor, the landing leads to a substantial Master bedroom with bay window, fitted wardrobes and en suite shower room. There are two additional spacious and bright double bedrooms, one with an en suite shower room, a fourth large single bedroom and a separate family bathroom.

The property also offers oak doors throughout and a large landing with loft access.

Externally and to the front, this attractive and contemporary home benefits from a large gravel driveway and an integral double garage. The private rear garden is mainly laid to lawn and surrounded by high fencing. There is also a patio, perfect for al-fresco dining in the warmer months.



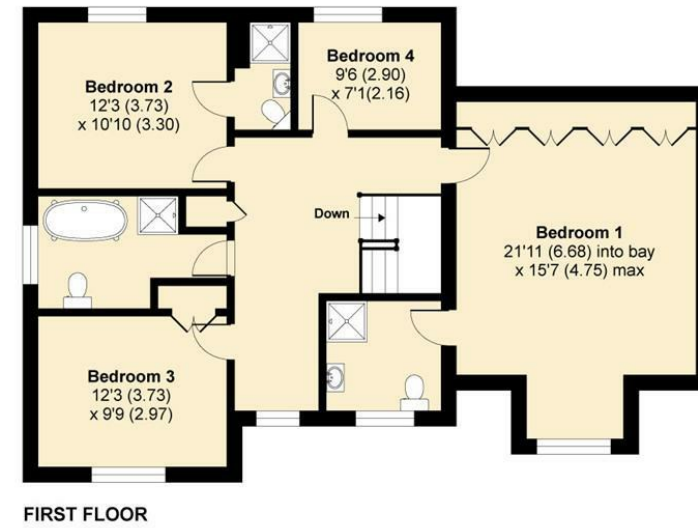
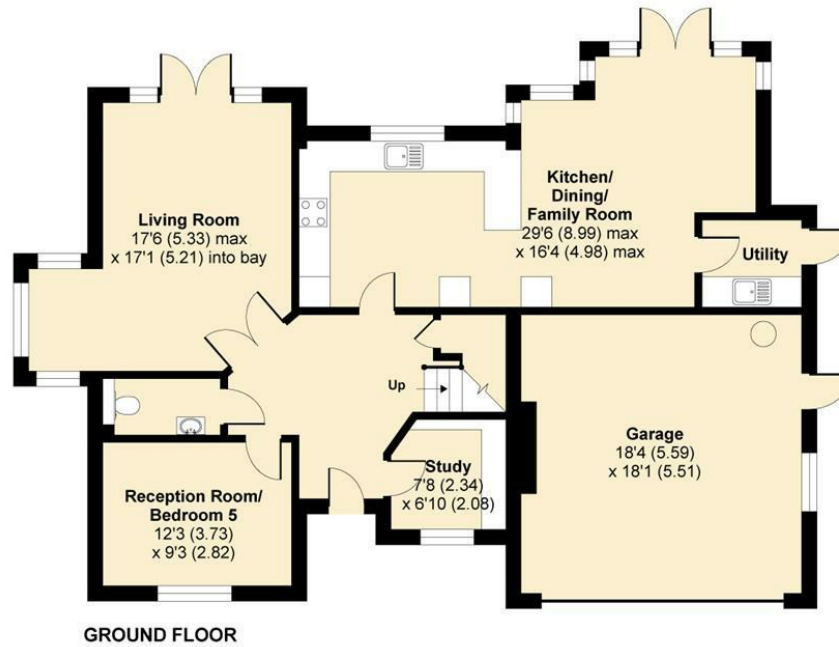
Ottways Lane, Ashted, KT21

Approximate Area = 2063 sq ft / 191.7 sq m

Garage = 333 sq ft / 30.9 sq m

Total = 2396 sq ft / 222.6 sq m

For identification only - Not to scale



Floor plan produced in accordance with RICS Property Measurement Standards incorporating International Property Measurement Standards (IPMS2 Residential). © n/checom 2021. Produced for V&H Homes. REF: 702596

V&H Homes

01372 221 678

sales@vhomes.co.uk

www.vhomes.co.uk



Your local property specialist