



Kennel Lane, Fetcham

32 Kennel Lane

Fetcham, Leatherhead

Council Tax band: F

Tenure: Freehold

EPC Energy Efficiency Rating: D

EPC Environmental Impact Rating: E

- Detached 4 Bedroom House
- Peaceful Residential Location
- 34ft Kitchen/Dining/Family Area
- 22ft Reception Room
- Two Bathrooms
- Downstairs WC
- Off-Street Parking
- Large Private Garden

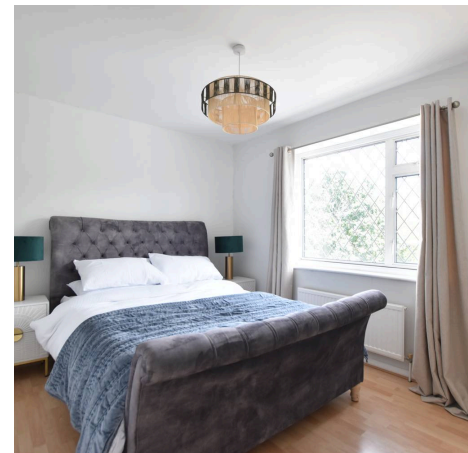




Kennel Lane

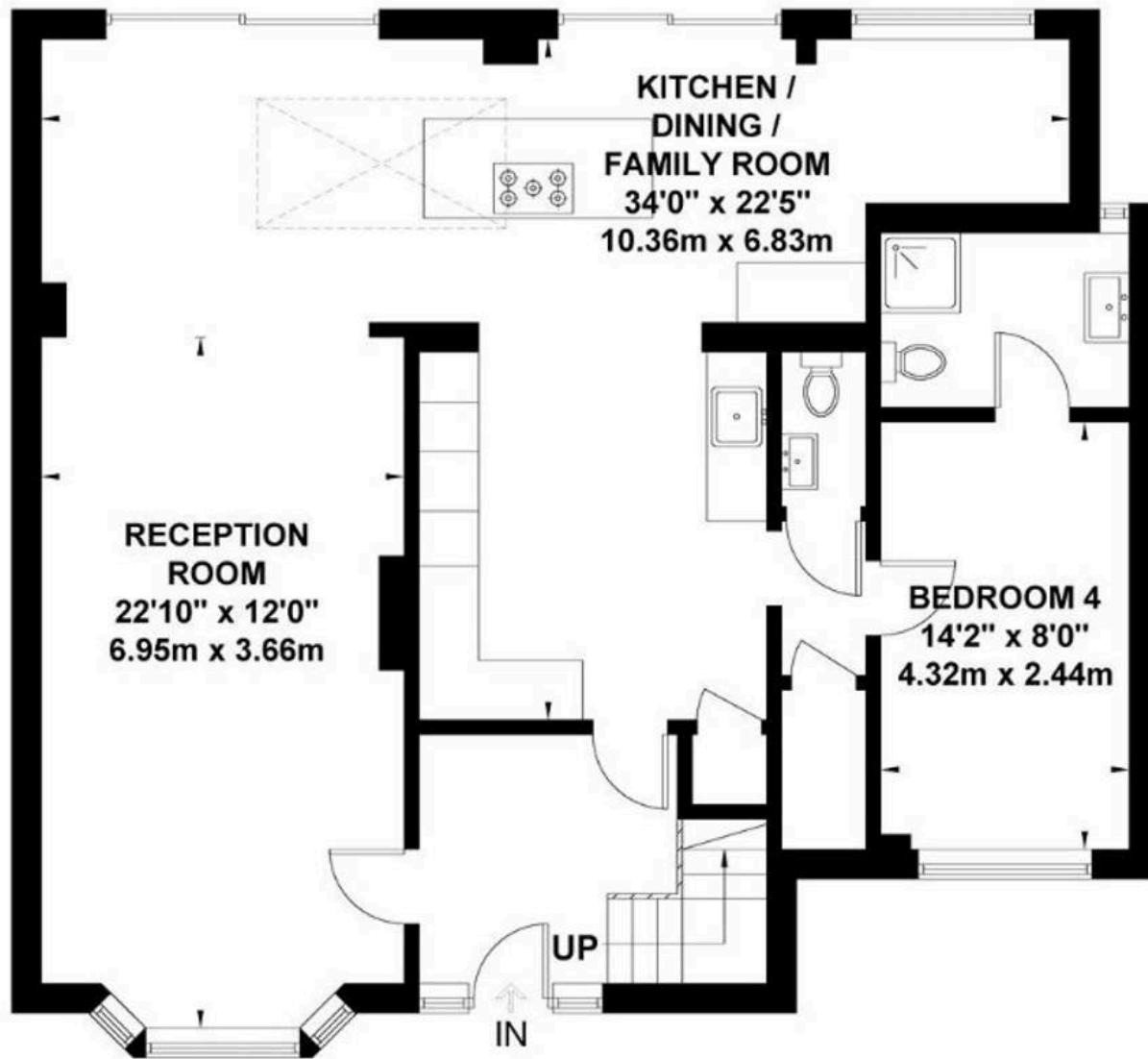
Fetcham

This beautifully presented four bedroom detached house offers contemporary living throughout, having been recently renovated to a high standard. The spacious entrance hall leads to a bright and airy lounge, perfect for relaxing or entertaining guests. The modern kitchen features integrated appliances, ample storage, and sleek worktops, seamlessly connecting to a generous open-plan dining area. Downstairs also consists of a bedroom with an en-suite shower room, and a WC. Upstairs, the principal bedroom benefits a modern built-in wardrobe, and three further well-proportioned bedrooms offer flexibility for family living. The family bathroom is finished with quality fixtures and fittings. High-quality flooring and tasteful décor flow throughout the property, creating a welcoming and contemporary atmosphere. Additional features include double glazing and gas central heating. Located in a sought-after residential area, this home is ideally positioned for a quiet family life.

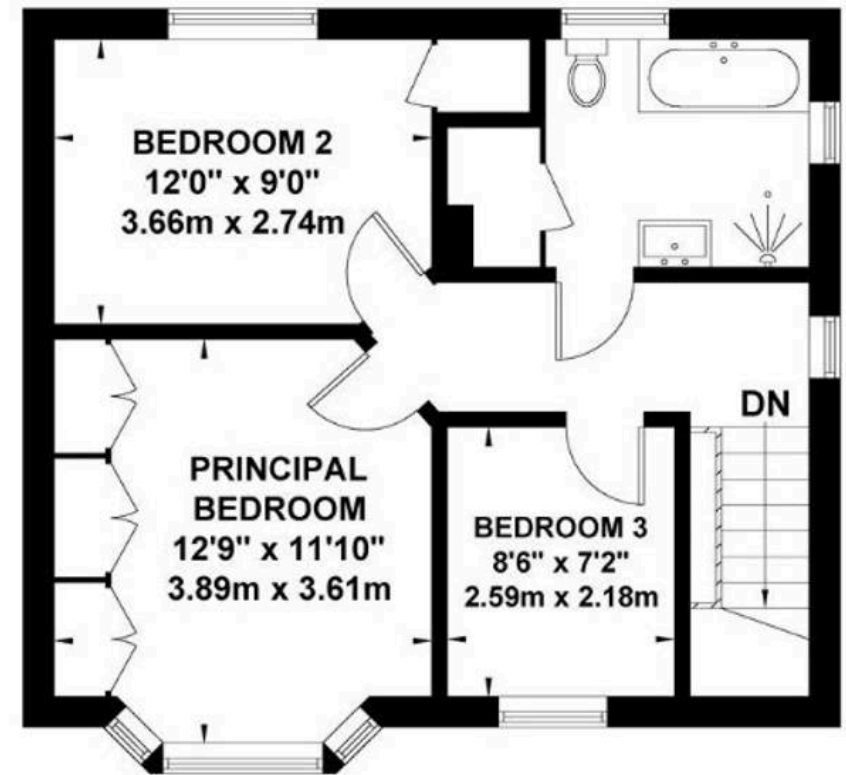


Kennel Lane, Fetcham

Approximate Gross Internal Area = 146.9 sq m / 1581 sq ft



GROUND FLOOR



FIRST FLOOR

Exposure House © 2026
www.exposure.house

Whilst every attempt has been made to ensure the accuracy of this floor plan, measurements of doors, windows and rooms are approximate and no responsibility is taken for any error or omission. This illustration is for identification purpose only. Measured and drawn accordance with RICS guidelines. Not drawn to scale, unless stated. Dimensions shown are to the nearest 3" and are to the points indicated by the arrow heads.

