



13 The Drive, Leatherhead KT22 9EN

V&H
HOMES
Your local property specialist

13 The Drive Leatherhead KT22 9EN

An attractive and sought-after 1930s three-bedroom family home. This spacious semi-detached property is ideally located in a sought-after PRIVATE ROAD in Fetcham. Offered for sale with NO CHAIN and the opportunity to enhance and extend to your own specification. Call us for more details and viewing arrangements!

Semi-Detached Family House

Sought After Private Road

Two Reception Rooms

Spacious Kitchen-Breakfast Room

Three Bedrooms

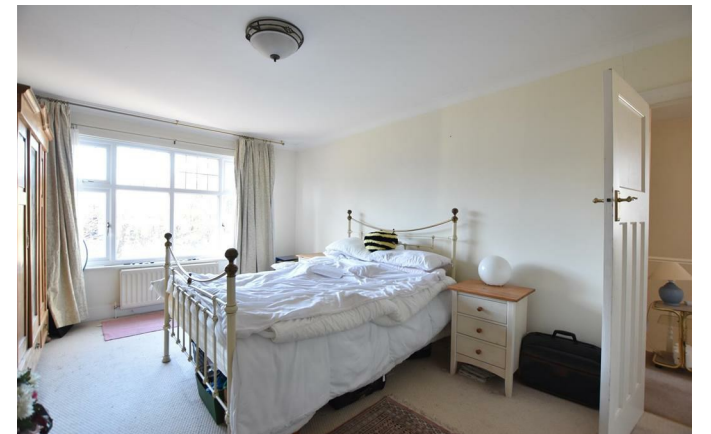
Bathroom and Downstairs WC

Mature Garden

Garage & Off Road Parking

End of Chain

EPC Rating E





A welcoming hallway leads through to a spacious dining room with doors onto the rear garden. Internal double doors open to a spacious living room, perfect for family gatherings, with a generous bay window overlooking the front garden. The ground floor also benefits from a well-appointed kitchen/breakfast room with a range of units and integrated appliances, and a useful downstairs WC.

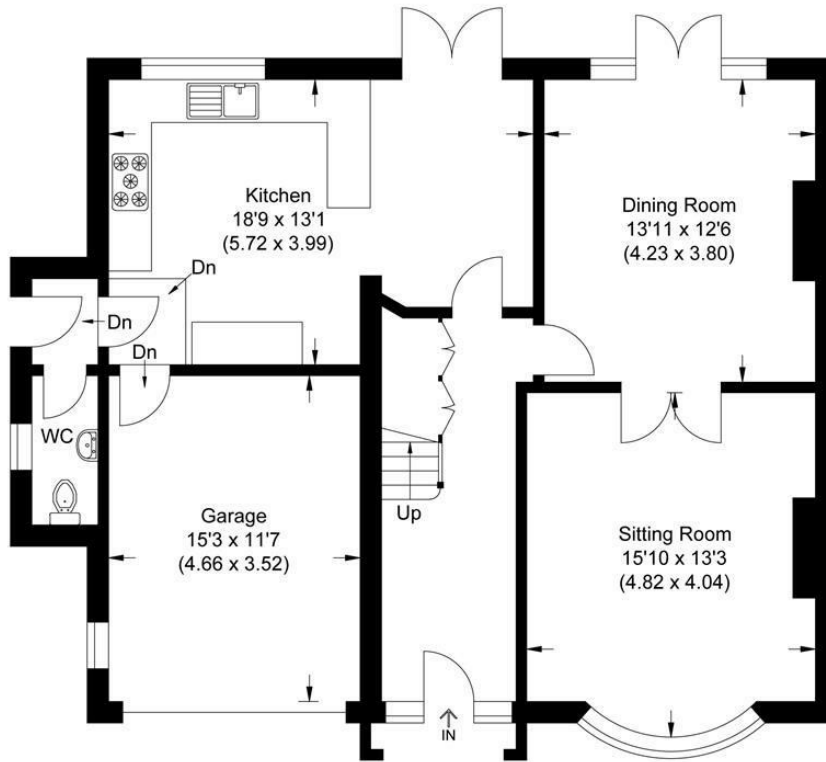
Stairs lead from the hallway to a bright first floor landing. There are two spacious double bedrooms and a third single bedroom, and a family bathroom with a separate shower and corner bath.

Externally, the secluded rear garden benefits from side access and is mainly laid to lawn with mature shrubs and trees plus a patio. The property has an integral garage, with plenty of off street parking and a front lawn.

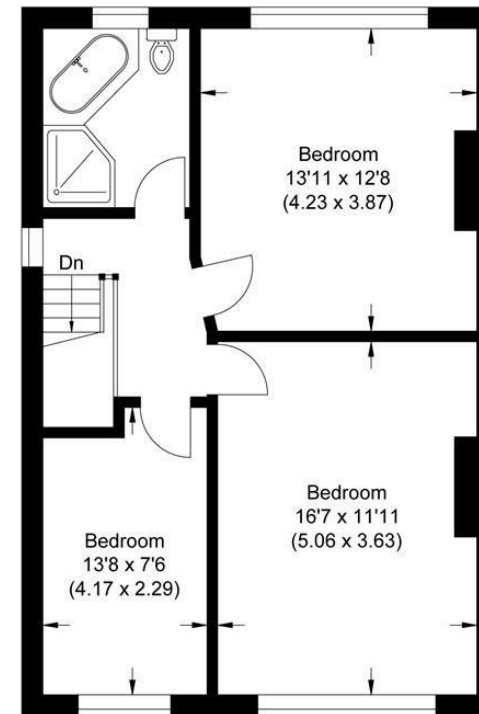




Approximate Gross Internal Area
149.40 sq m / 1608.12 sq ft
(Includes Garage)
Garage Area 16.05 sq m / 172.76 sq ft



Ground Floor



First Floor

Illustration for identification purposes only, measurements are approximate, not to scale.

V&H Homes

01372 221 678

sales@vhomes.co.uk

www.vhomes.co.uk

