



Albert Road, Ashted KT21 1BJ

**V&H**  
HOMES

Your local property specialist

Albert Road  
Ashted KT21 1BJ

*V&H Homes are pleased to offer this superb, completely renovated conversion four bedroom semi detached family home offering high specification accommodation throughout. This property is conveniently situated in a quiet cul-de-sac location in the heart of Ashted Village.*

Complete Renovation/Conversion

Four Bedrooms

Semi Detached

Approx 1,496 SQFT Living Accommodation

Arranged Over Three Floors

Spacious Kitchen/Dining/Family Room

Off Street Parking

Three Bathrooms & Downstairs WC

Solar Panels

Ashted Village Location

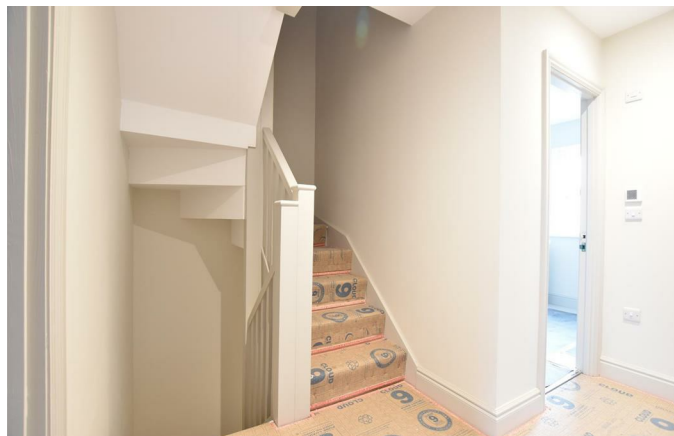




Features include:

- Fully integrated kitchen with granite work surfaces.
- LTV flooring with underfloor heating to ground floor.
- Buyer choice of carpets to first and second floors.
- Heritage sash windows.
- Bi-fold doors to landscaped garden.
- Two ensuite shower rooms plus a family bathroom all with underfloor heating.
- Solar panels directly saving on your electricity bill.
- Off street parking for two vehicles.

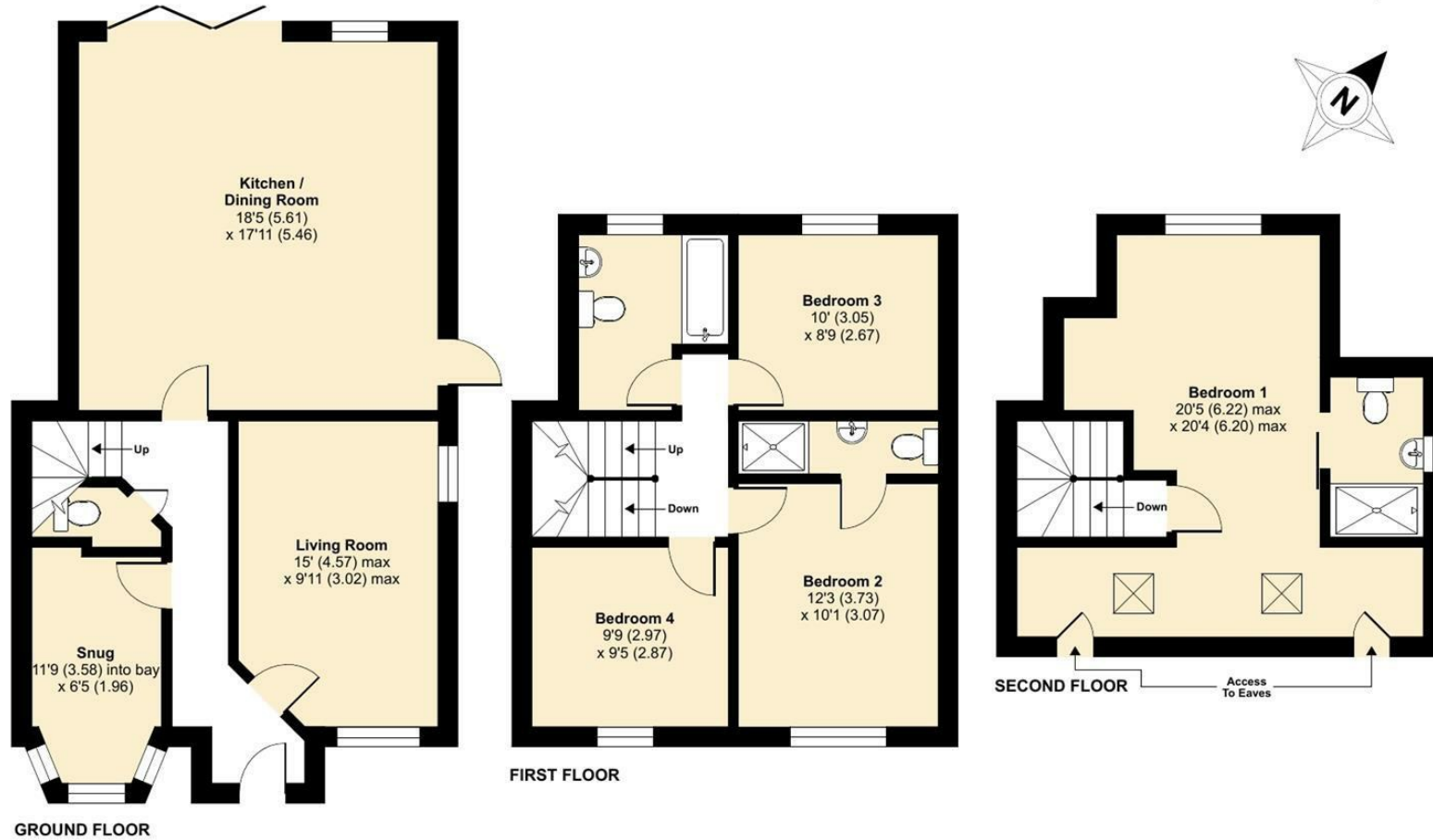
Early completion available.



# Albert Road, KT21

Approximate Area = 1496 sq ft / 139 sq m

For identification only - Not to scale



Floor plan produced in accordance with RICS Property Measurement Standards incorporating International Property Measurement Standards (IPMS2 Residential). © nchecon 2024. Produced for V&H Homes. REF: 1057955



## V&H Homes

01372 221 678

[sales@vhomes.co.uk](mailto:sales@vhomes.co.uk)

[www.vhomes.co.uk](http://www.vhomes.co.uk)



Your local property specialist