



Parkview Way, Epsom KT19 8FA

V&H
HOMES

Your local property specialist

Parkview Way Epsom KT19 8FA

Located in the highly desirable area of Parkview Way, Epsom, this exceptional semi-detached house offers a perfect blend of style, comfort and is finished to an exceptionally high standard. This spacious and contemporary home offers three bedrooms and three bathrooms plus immaculate living accommodation.

OIEO £695,000

Fully Extended and Immaculately Presented
Family Home

3 Spacious Bedrooms

3 Stunning Bathrooms

Downstairs Cloakroom

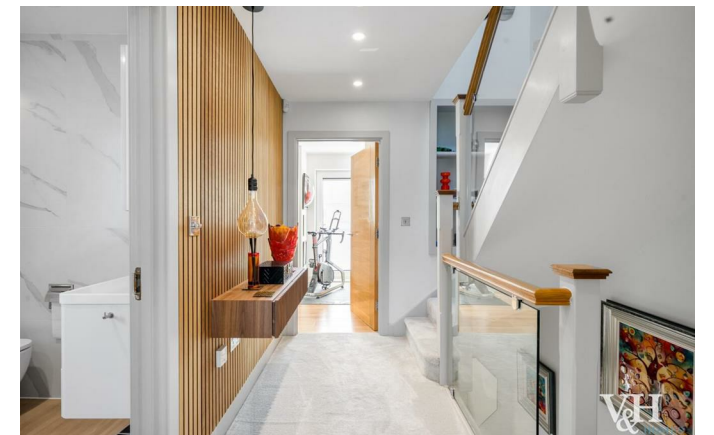
Sonos Entertainment System Throughout

Small Enclosed Patio/Garden South Facing

Must be Seen to be Appreciated

Underfloor Heating

EPC Rating: C



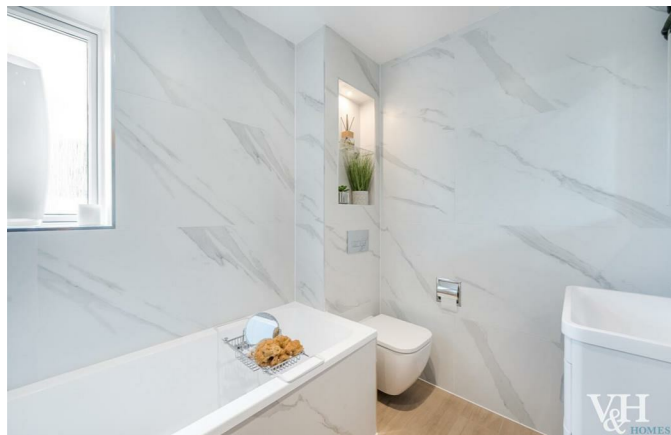


Upon entering, you are welcomed into a generous reception area that leads to an extended lounge and dining space, perfect for entertaining guests or enjoying family time. The well-appointed kitchen and breakfast room features a breakfast bar, making it a delightful space for casual dining. The kitchen is equipped with integrated appliances, including a wine fridge, dishwasher, fridge/freezer, and washing machine, ensuring convenience and ease for everyday living.

The property boasts three spacious bedrooms, two of which benefit from large en-suite bathrooms, providing privacy and comfort. A well-designed family bathroom and a convenient downstairs cloakroom further enhance the functionality of this home.

With its modern design and high-quality finishes, this property is not only aesthetically pleasing but also practical for modern living. The location in Epsom offers a vibrant community with excellent amenities, schools, and transport links, making it an ideal choice for families and professionals alike.

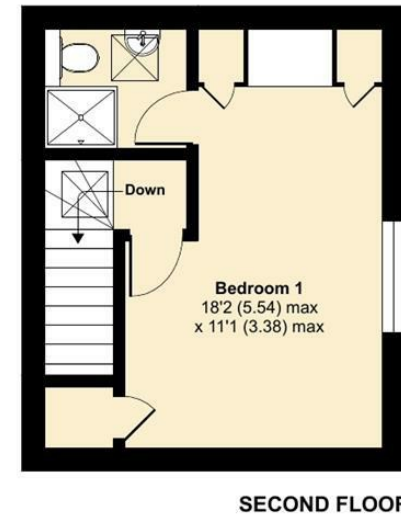
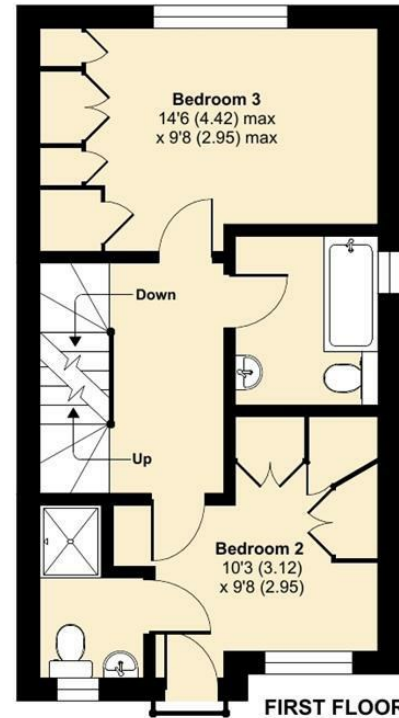
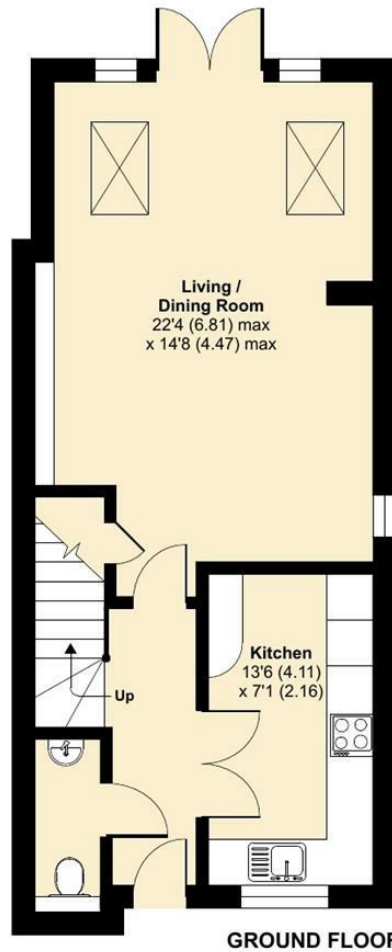
This semi-detached house on Parkview Way is a rare find, combining luxury and practicality in a sought-after area. The driveway gives additional space for parking. The property has Sonos sound system throughout, all bathrooms have Bluetooth systems, all windows downstairs have electric blinds making it super easy to adjust. The Ringo doorbell system and full CCTV ensures peace of mind. The garden is landscaped and has side access plus a little garden room equipped with electricity could be used as a small office.



Parkview Way, Epsom, KT19

Approximate Area = 1179 sq ft / 109.5 sq m

For identification only - Not to scale



Floor plan produced in accordance with RICS Property Measurement 2nd Edition, Incorporating International Property Measurement Standards (IPMS2 Residential). © nchecon 2025. Produced for V&H Homes. REF: 1309409



V&H Homes

01372 221 678

sales@vhhomes.co.uk

www.vhhomes.co.uk

rightmove

Zoopla

PrimeLocation.com



hometrack

V&H
& HOMES

Your local property specialist