



Ashworth House, 9 The Street, Ashted KT21

3AD

V&H
HOMES

Your local property specialist

Ashworth House, 9 The Street Ashtead KT21 2AD

A luxury and contemporary one bedroom apartment located on the first floor of a highly sought after development in the centre of Ashtead Village. The property would be an excellent investment or home.

First Floor Apartment

Open Plan Lounge/Kitchen/Dining Area

Fully Integrated Kitchen with AEG Appliances

Lift Service

Video Entry System

Gated Secure Parking

0.7 Miles to Station

Ashtead High Street

EPC Rating C

Council Tax Band C



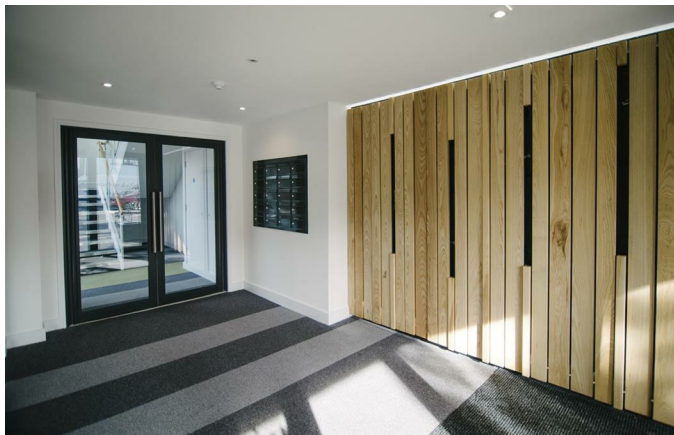


The apartment offers a high specification, open plan living space and a bright double bedroom. The kitchen has sleek lines, custom built kitchen units and is fitted with integrated AEG appliances including a dishwasher.

A modern bathroom features full height tiles around the bath and shower enclosure with sliding shower screen and LED illuminated mirror. There is Karndean flooring and low energy lighting throughout.

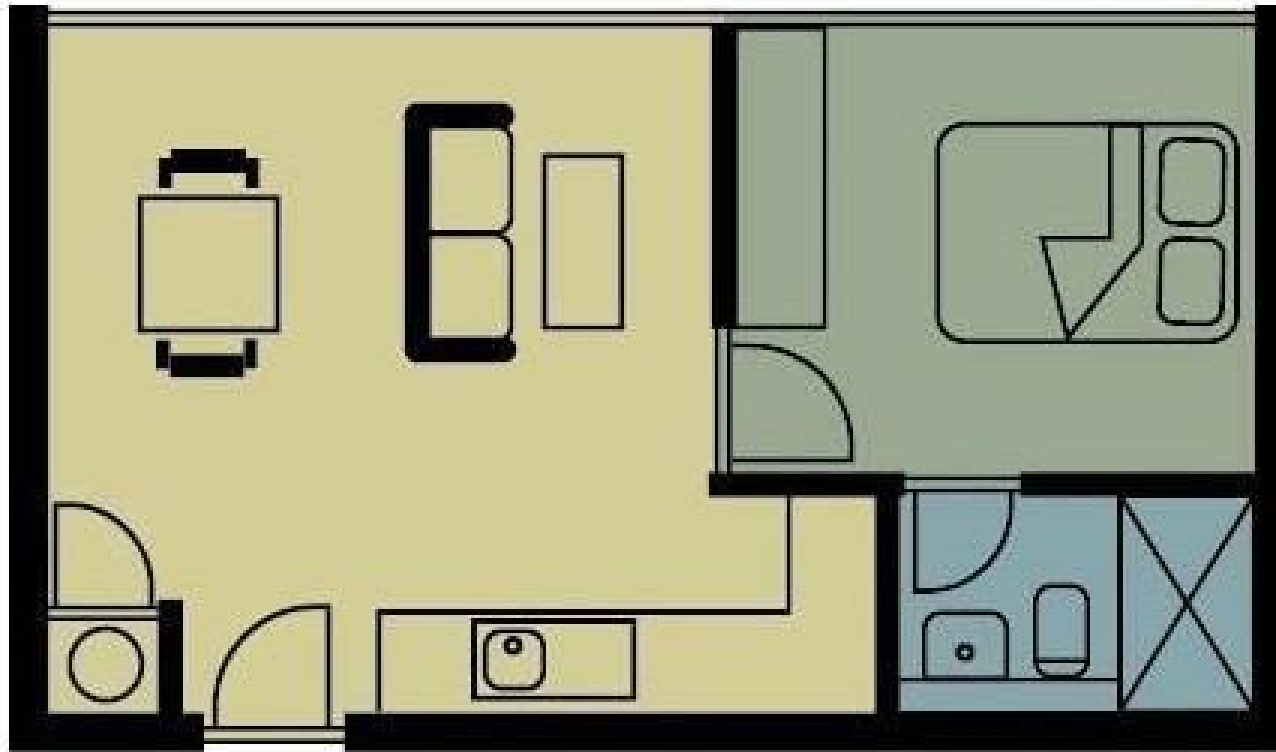
This apartment also benefits from a secure video entry system, a passenger lift to all floors and allocated secure parking accessed via a gated entrance.

Situated in the very heart of Ashted Village with its selection of independent shops & restaurants and just 0.7 miles from Ashted Station, which offers trains to Waterloo and Victoria in approximately 40 minutes.



Ashworth House, Ashtead

Total Area: 32 sq m



First Floor

V&H Homes

01372 221 678

sales@vhhomes.co.uk

www.vhhomes.co.uk

rightmove 

Zoopla

 PrimeLocation.com

 The Property Ombudsman

 hometrack

V&H
HOMES

Your local property specialist