



Woodlands Way, Ashted KT21 1LH

**V&H**  
HOMES

Your local property specialist



## Woodlands Way Ashted KT21 1LH

*A superbly presented 3/4 bedroom chalet bungalow with large southerly facing gardens offering spacious and flexible accommodation plus the opportunity to create a full first floor (STPP). Situated in a quiet residential location close to CLFS and Ashted Village.*

3/4 Double Bedrooms

1/2 Reception Rooms

Bathroom plus Ensuite

South Facing Gardens

Sought After Ashted Village Road

Detached Chalet Bungalow

Contemporary Kitchen / Dining Room

Double Garage

Kerb Appeal

Outstanding Local Schools

Woodlands Way is a highly sought after residential road, close to outstanding local state and independent schools. Ashted station is approximately one mile from the property and offers frequent services to London Waterloo and Victoria in approximately 40 minutes.







On entering the bungalow, a large and welcoming entrance hall, with ample storage space, leads to the spacious triple aspect living room with bi-fold doors to the garden and a wood burning fireplace. The contemporary kitchen / dining room benefits from a range of integrated appliances, ample space for a table and chairs and French doors to the garden. The ground floor of this superb property also offers an ensuite double bedrooms plus a fourth bedroom/2nd reception room.

The top floor of this well located home provides two further double bedrooms with built in wardrobes and a spacious modern family bathroom.

Externally and to the front, this attractive property offers kerb appeal and benefits from a double garage, driveway parking and a charming front lawn. To the rear, the beautifully landscaped and immaculate garden is south facing, expansive, mainly laid to lawn and surrounded by mature trees and hedging.



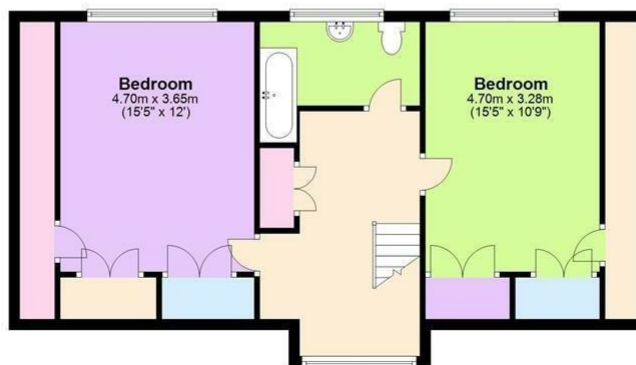
### Ground Floor

Approx. 118.9 sq. metres (1279.6 sq. feet)



### First Floor

Approx. 66.5 sq. metres (716.1 sq. feet)



Total area: approx. 185.4 sq. metres (1995.6 sq. feet)

**V&H Homes**

01372 221 678

[sales@vhhomes.co.uk](mailto:sales@vhhomes.co.uk)

[www.vhhomes.co.uk](http://www.vhhomes.co.uk)

**rightmove**

**Zoopla**

**PrimeLocation.com**

**The Property Ombudsman**

**hometrack**

**V&H HOMES**

Your local property specialist