



Dale View, Epsom KT18 6EH

Your local property specialist

## Dale View Epsom KT18 6EH

*An attractive and beautifully presented three bedroom semi-detached house with large garden, situated in a tranquil cul-de-sac within the sought-after Headley Court estate.*

Semi Detached

Three Bedrooms

Large Living / Dining Room

Contemporary Kitchen

Summer House

Large South East Facing Garden

Semi Rural Setting

2 Allocated Parking Spaces

Historic Headley Court Estate

EPC Rating C





This stylish home offers a bright and welcoming hallway with useful under stairs storage leading through to an expansive living / dining room. The contemporary open plan kitchen is fitted with a range of cupboards and integrated appliances. A side door leads to the spacious south-east facing garden.

The first floor consists of three bright bedrooms, a modern family bathroom and separate wc.

Outside, the rear garden is mostly laid to lawn with raised borders and a secluded summer house. There is also a store room and shed.

To the front, there are two allocated parking spaces.



# Dale View, Headley, Epsom, KT18

Approximate Area = 920 sq ft / 85.4 sq m (excludes lean to)

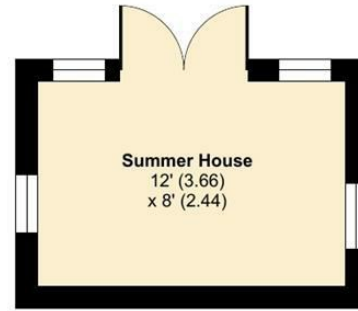
Outbuildings = 156 sq ft / 14.4 sq m

Total = 1076 sq ft / 99.8 sq m

For identification only - Not to scale

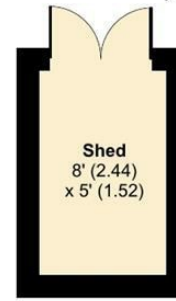


**Garden**  
Approximate  
98' (29.87)  
x 36' (10.97)



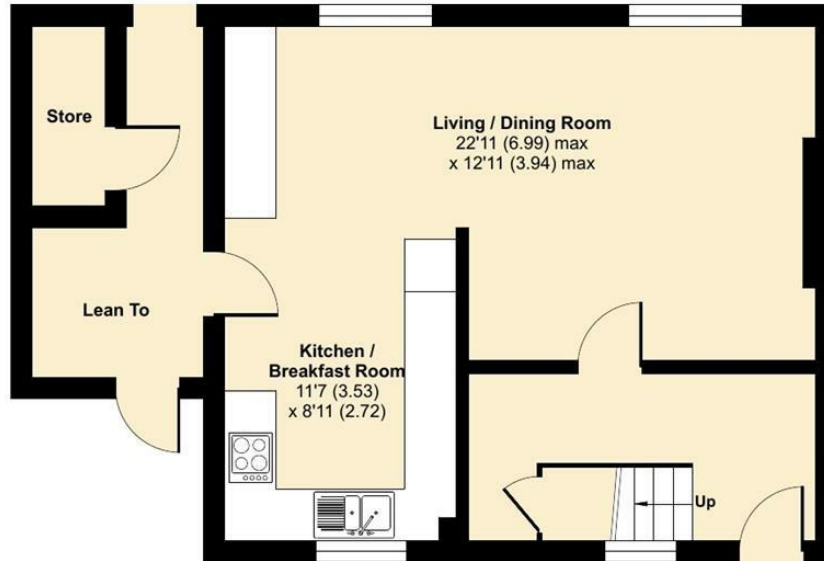
**Summer House**  
12' (3.66)  
x 8' (2.44)

**OUTBUILDING 1**

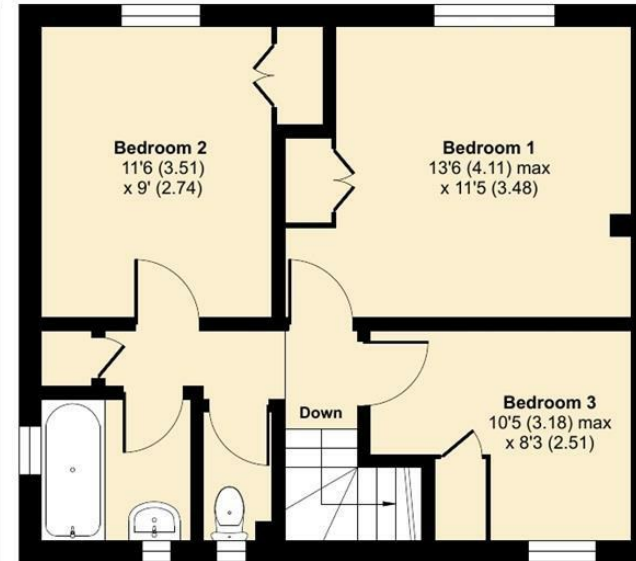


**Shed**  
8' (2.44)  
x 5' (1.52)

**OUTBUILDING 2**



**GROUND FLOOR**



**FIRST FLOOR**



Floor plan produced in accordance with RICS Property Measurement Standards incorporating International Property Measurement Standards (IPMS2 Residential). © nchecon 2024. Produced for V&H Homes. REF: 1134236



**V&H Homes**

01372 221 678

sales@vhomes.co.uk

www.vhomes.co.uk



Your local property specialist