



The Warren, Worcester Park KT4 7DH

V&H
HOMES

Your local property specialist

The Warren

Worcester Park KT4 7DH

This attractive well presented two double bedroom detached bungalow is located in a sought-after quiet location, situated on a private road in Worcester Park.

Detached Bungalow

Two Double Bedrooms

24ft Living/Dining Room

Private Road

Garage

Driveway Parking

Well Presented

Sought-after Location

South Westerly Facing Aspect Garden

EPC Rating E



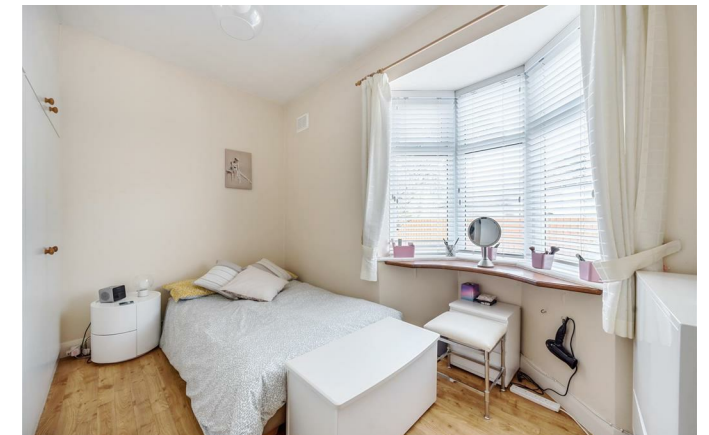


Internally, this lovely home offers a spacious entrance hall leading through to a bright airy living/dining room, which benefits from French doors opening into the garden. There is also a well proportioned modern kitchen with a range of fitted units and external side access.

This delightful bungalow provides two excellent sized double bedrooms, the largest with an attractive bay window. In addition this property offers a contemporary shower room.

The south westerly rear garden is private, mainly laid to lawn and is surrounded by attractive borders. The garden benefits from a greenhouse and a patio perfect for dining outside in the summer months.

Viewings are highly recommended to appreciate the accommodation on offer in this attractive and spacious bungalow.





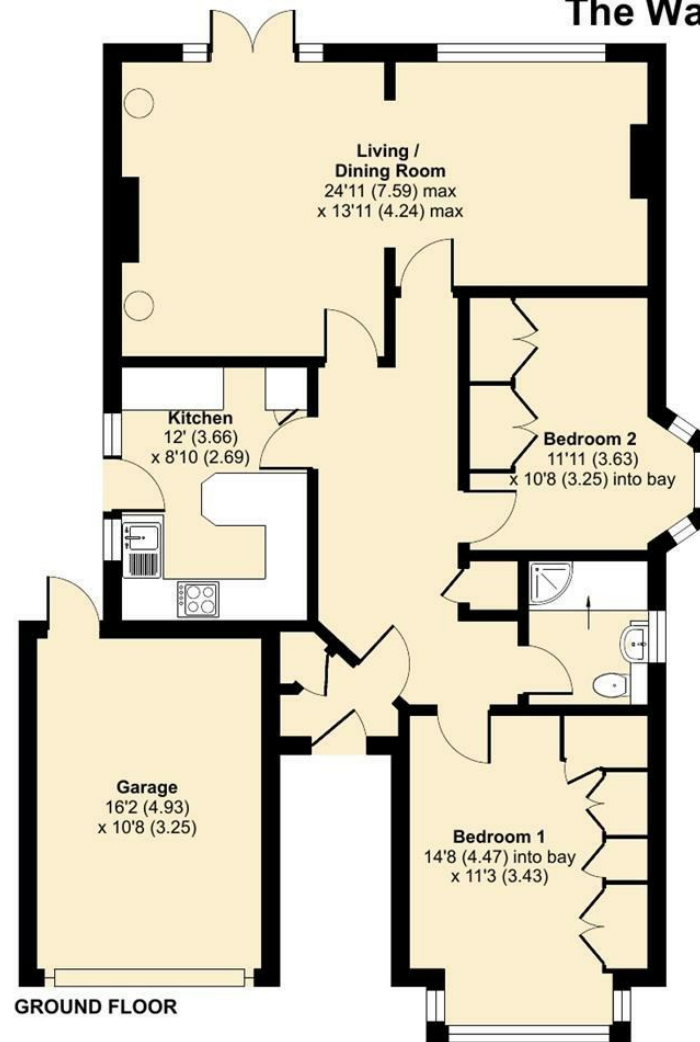
The Warren, Worcester Park, KT4

Approximate Area = 914 sq ft / 84.9 sq m

Garage = 167 sq ft / 15.5 sq m

Total = 1081 sq ft / 100.4 sq m

For identification only - Not to scale



Floor plan produced in accordance with RICS Property Measurement Standards incorporating International Property Measurement Standards (IPMS2 Residential). © nche.com 2024. Produced for V&H Homes. REF: 1083768



V&H Homes

01372 221 678

sales@vhhomes.co.uk

www.vhhomes.co.uk



Your local property specialist