



Pound Crescent, Fetcham KT22 9JW

**V&H**  
HOMES

Your local property specialist



## Pound Crescent Fetcham KT22 9JW

*V&H Homes are delighted to present this beautifully remodelled three-bedroom home, situated in the sought-after village of Fetcham. Boasting a contemporary open-plan layout and a generous west-facing garden, this property has been thoughtfully updated by the current owners to offer modern, stylish living.*

Remodelled semi-detached home

Heart of Fetcham village

Large west-facing garden

Open plan kitchen/dining room

Reception with log burner

Three spacious bedrooms

Modern bathroom with bath and shower

Driveway parking

EPC Rating: D







The heart of the home is the stylish open-plan kitchen/diner, perfect for modern living, with direct access through bifold doors to the impressive west-facing garden - expertly landscaped for relaxation and entertaining. A separate lounge complete with a feature log burner provides a cosy retreat.

Upstairs, three generously sized bedrooms are complemented by a luxurious bathroom with both a bath and separate shower.

The garden also features a useful outbuilding with a toilet and sink.

With driveway parking and a fantastic location close to amenities and schools, early viewings are strongly advised.





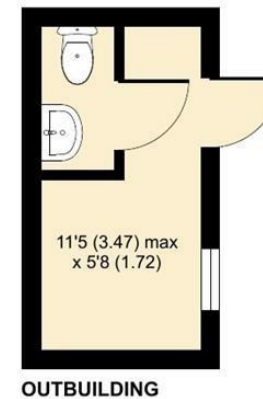
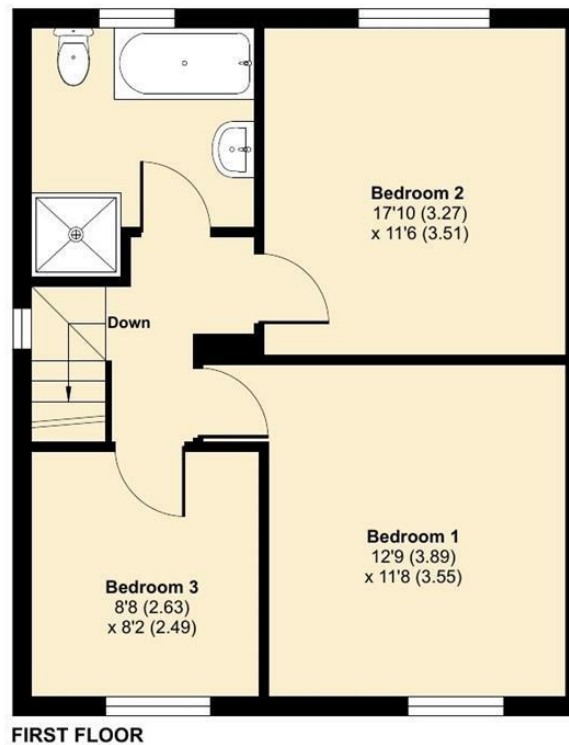
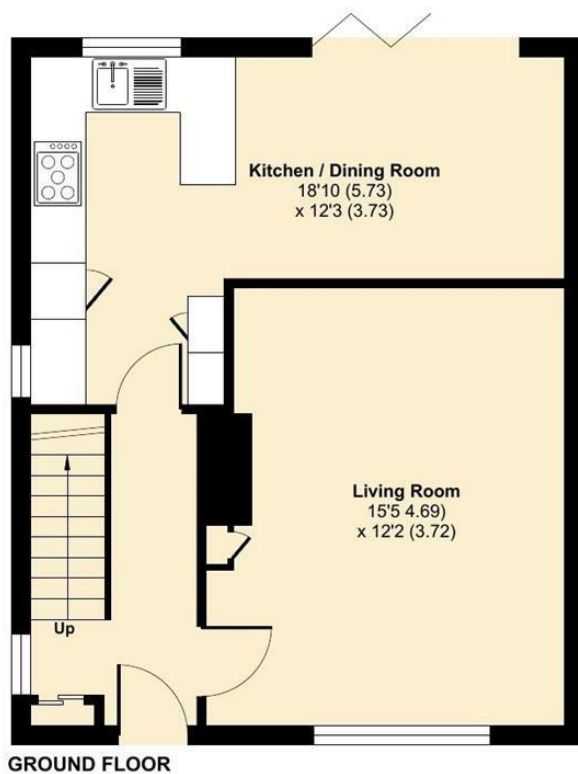
# Pound Crescent, Fetcham, Leatherhead, KT22

Approximate Area = 884 sq ft / 82.1 sq m

Outbuilding = 64 sq ft / 5.9 sq m

Total = 948 sq ft / 88 sq m

For identification only - Not to scale



Floor plan produced in accordance with RICS Property Measurement 2nd Edition, Incorporating International Property Measurement Standards (IPMS2 Residential). © ntechcom 2025. Produced for V&H Homes. REF: 1239565



**V&H Homes**

01372 221 678

sales@vhhomes.co.uk

www.vhhomes.co.uk

