



Summerfield, Ashted KT21 2LF

V&H
HOMES

Your local property specialist

Summerfield Ashted KT21 2LF

This spacious and bright four bedroom, two bathroom, family home is located in a highly sought-after South Ashted cul-de-sac close to outstanding schools.

Spacious Detached Home

Four Bedrooms

Two Bathrooms

Open Plan Kitchen / Dining Room

Spacious Dual Aspect Living Room

Double Garage

Study

Downstairs Cloakroom

Sought After Cul-de-sac

Lower Ashted

Close to outstanding local schools, including St Andrew's, Summerfield is a highly sought-after cul-de-sac in Lower Ashted approximately 1 mile from Ashted station which offers trains to London Victoria and Waterloo in approximately 40 minutes.





On entering the house, a welcoming entrance hall leads to the large and well presented kitchen / dining room with ample unit space, built in appliances and French doors to the garden. There is a spacious dual aspect living room with fireplace and doors to the garden. The ground floor of this excellent house also provides a fully fitted study and WC / cloakroom.

To the first floor, the landing takes you to the spacious master bedroom with en-suite shower room. There are two further double bedrooms, a large single bedroom which is currently used as a second study and a family bathroom.

The beautifully manicured rear garden mainly laid to lawn and surrounded by mature hedging and plants, which provide excellent privacy. To the side, this attractive house benefits from a double garage with parking in front.



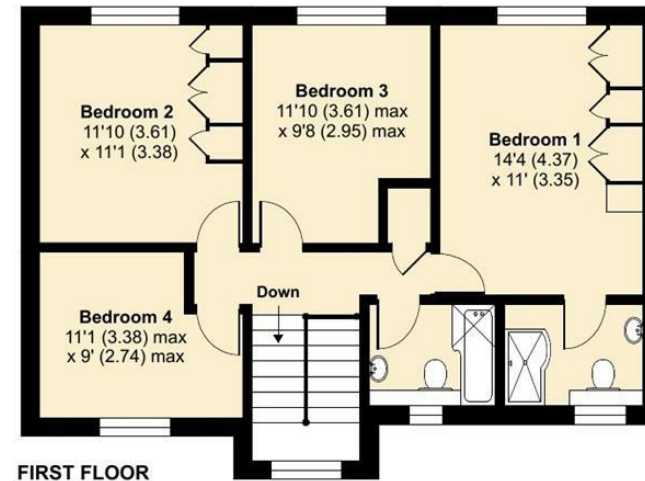
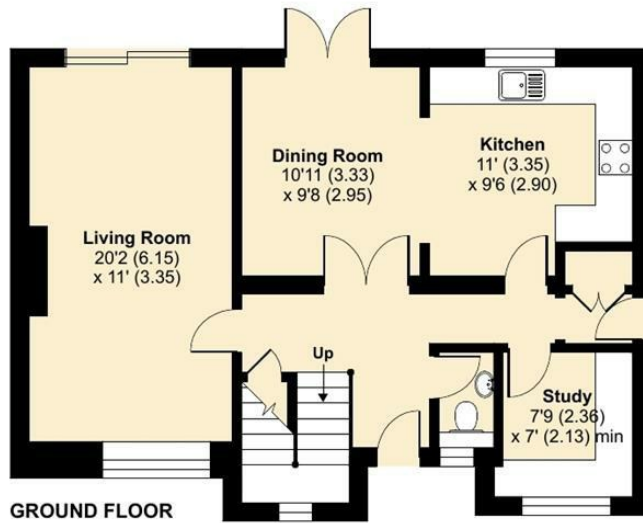
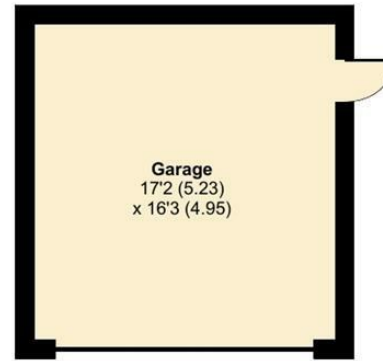
Summerfield, Ashted, KT21

Approximate Area = 1406 sq ft / 130.6 sq m

Garage = 280 sq ft / 26 sq m

Total = 1686 sq ft / 156.6 sq m

For identification only - Not to scale



Floor plan produced in accordance with RICS Property Measurement Standards incorporating International Property Measurement Standards (IPMS2 Residential). © nchecon 2022. Produced for V&H Homes. REF: 855941



V&H Homes

01372 221 678

sales@vhhomes.co.uk

www.vhhomes.co.uk



Your local property specialist