



JA Truelove & Son Limited  
Ident Family Funeral Directors & Monumental Craftsmen since 1885

8 Craddocks Parade  
Tel: 01372 274183

 **QEF** queen elizabeth's foundation for disabled people

achieving goals for life  
qef.org.uk

**Blue Marl**  
Fish & Chips Restaurant

FULLY LICENSED TAKEAWAY TEL: 01372 274183

  
**C S J**  
Commercial Sales and Lettings  
**SHOP TO LET & FREEHOLD FOR SALE**  
020 8296 1273  
www.csj.eu.com

Craddocks Parade, Ashted KT21 1QL

**V&H**  
HOMES  
Your local property specialist

## Craddocks Parade Ashted KT21 1QL

*V&H Homes are delighted to present this beautifully redecorated two bedroom first floor apartment, ideally positioned within Craddocks Parade, Ashted, offering a superb blend of modern styling and everyday convenience.*

Two Bedrooms

Recently Decorated

New Lease

First Floor Flat

Own Front Door

Close to Ashted Station

Over 620 sq ft

EPC Rating C





The property has been thoughtfully refreshed throughout, creating a bright and welcoming interior ready for immediate occupation. At its heart is a generous living room, providing ample space for both relaxation and dining, with an abundance of natural light. The adjoining kitchen is neatly arranged and well-proportioned, offering practical workspace and storage.

There are two well-sized bedrooms, including a spacious principal bedroom and a versatile second bedroom, ideal for guests, a home office or nursery. A bathroom suite completes the accommodation.

Further benefits include a new lease to be granted, providing peace of mind for prospective purchasers, along with a highly convenient location above local amenities and within easy reach of Ashted Village, excellent transport links and green open spaces.

An ideal purchase for first-time buyers, investors or those seeking a low-maintenance home in a sought-after village setting. Early viewing is highly recommended.



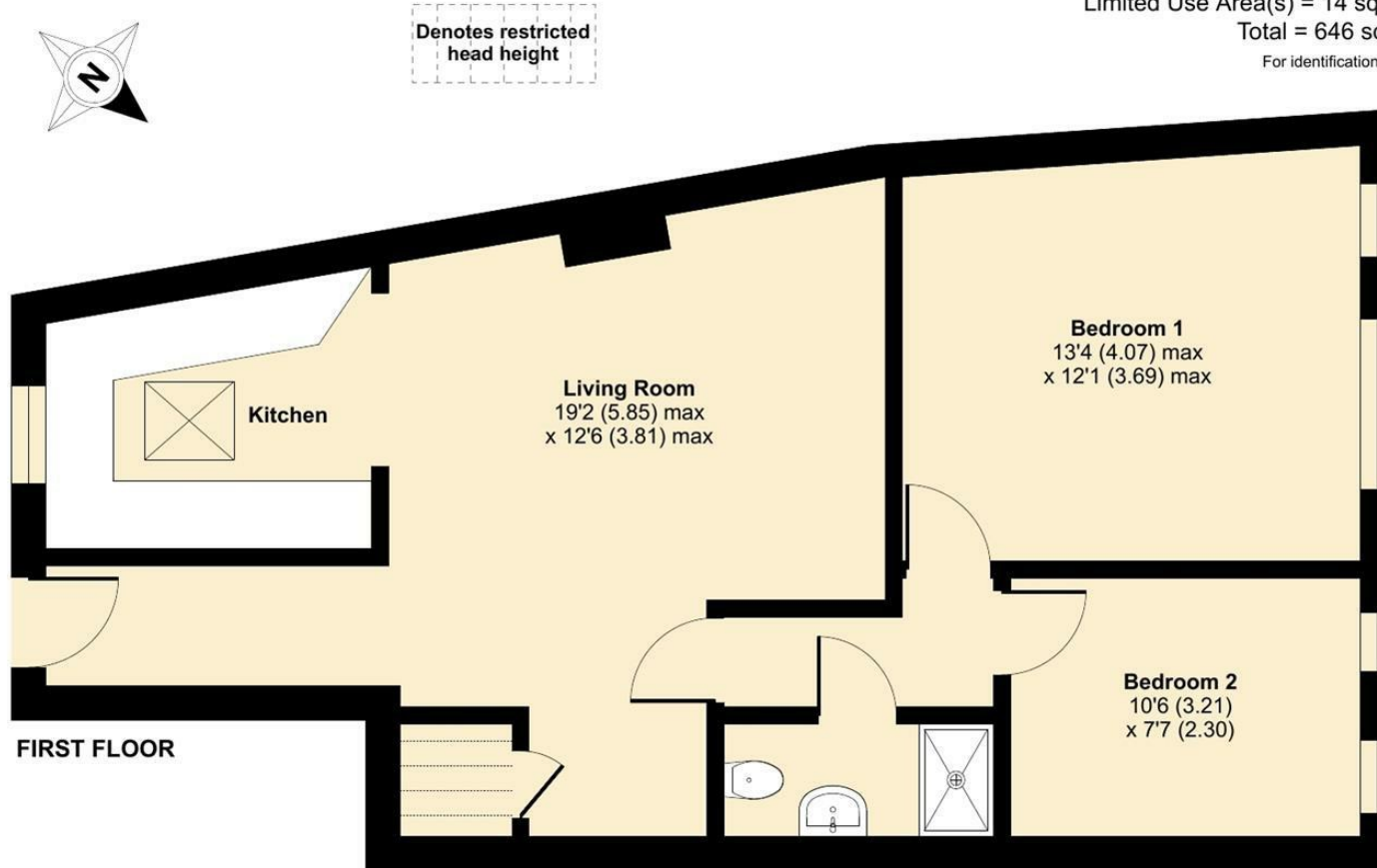
# Craddocks Parade, Ashted, KT21

Approximate Area = 632 sq ft / 58.7 sq m

Limited Use Area(s) = 14 sq ft / 1.3 sq m

Total = 646 sq ft / 60 sq m

For identification only - Not to scale



Floor plan produced in accordance with RICS Property Measurement 2nd Edition, Incorporating International Property Measurement Standards (IPMS2 Residential). © ncthecom 2026. Produced for V&H Homes. REF: 1441561



## V&H Homes

01372 221 678

sales@vhhomes.co.uk

www.vhhomes.co.uk



Your local property specialist