



Rosebery Road, Langley Vale KT18 6AA

Your local property specialist

Rosebery Road Langley Vale KT18 6AA

A remarkably spacious detached property having a contemporary finish throughout offering four double bedrooms, two/three bathrooms and four reception rooms. A fantastic home studio is a recent addition to the property situated at the the end of the mature garden. Langley Vale is a semi rural location with a primary school and local bus routes, nestled on the edge of Epsom Downs and famous racecourse.

Extended Detached Home

4 Double Bedrooms

4 Reception Rooms

Ensuite and Family Bathrooms

Potential for 2nd Ensuite

Bedroom Terrace

Sound Proof Studio

Utility and Laundry Rooms

Garage/Store Room

EPC Rating





Numerous features include herringbone style flooring, fully fitted kitchen, utility room and upstairs laundry room. Further features are excellent sized bedrooms and contemporary bathrooms including a potential 2nd ensuite room. Rooftop views are enjoyed from the rear of the property including a vast master bedroom suite on the 2nd floor and a guest suite on the first floor which has patio doors to a large balcony.

The ground floor accommodation includes an open plan kitchen/dining/family space plus a snug/formal lounge which opens to a large study.

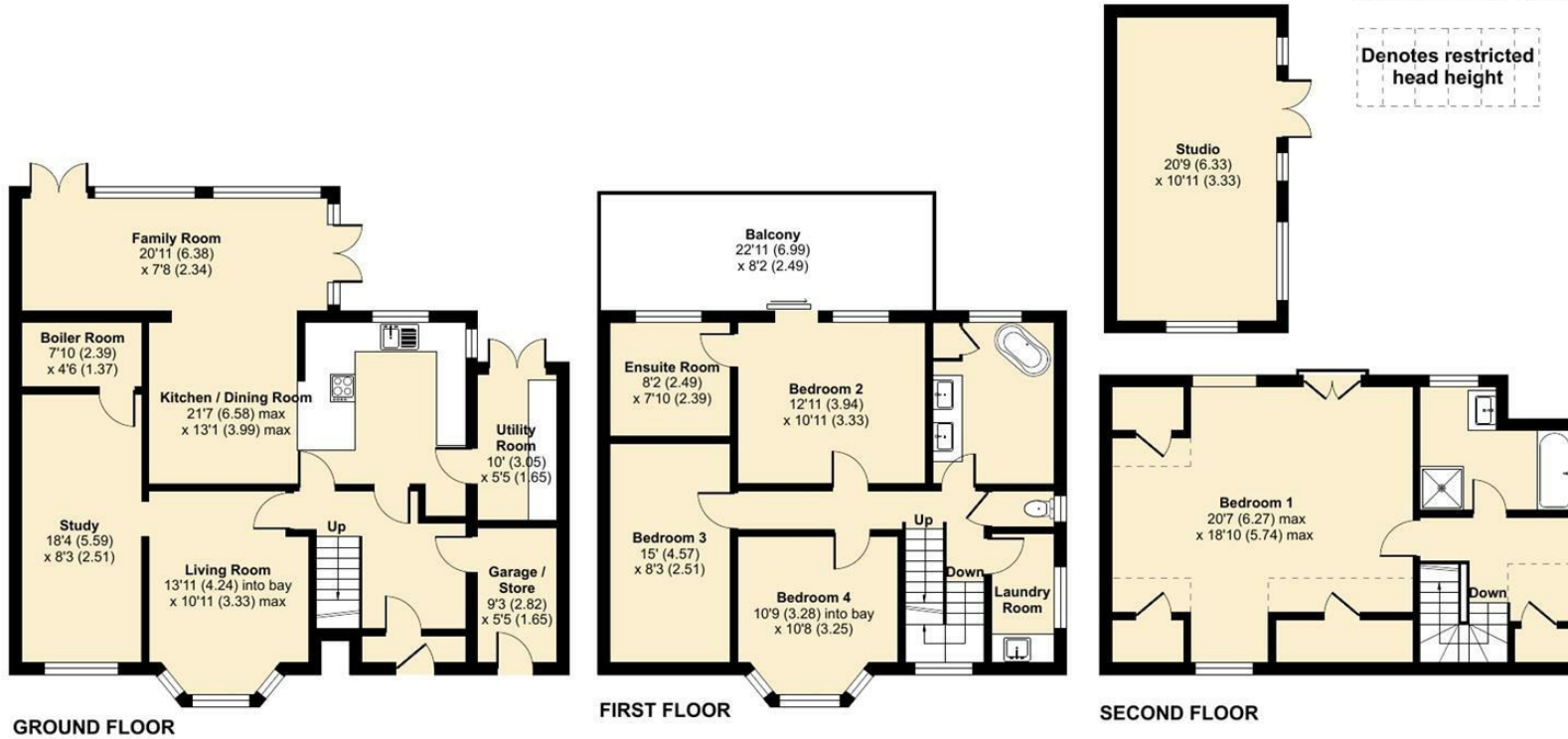
The soundproof studio is ideal for work or entertaining. The gardens are a private space to relax and the front of the property offers off street parking for 2-3 vehicles.



Rosebery Road, Epsom, KT18

Approximate Area = 2102 sq ft / 195.2 sq m
 Garage / Store = 50 sq ft / 4.6 sq m
 Limited Use Area(s) = 147 sq ft / 13.6 sq m
 Studio = 227 sq ft / 21 sq m
 Total = 2526 sq ft / 234.6 sq m
 Approx. Garden Length = 73 sq ft (22.27)

For identification only - Not to scale



Floor plan produced in accordance with RICS Property Measurement Standards incorporating International Property Measurement Standards (IPMS2 Residential). © n̄tchecom 2024. Produced for V&H Homes. REF: 1163071

V&H Homes

01372 221 678

sales@vhomes.co.uk

www.vhomes.co.uk

