

TURNERS



Station Approach, Cheam, SM2
£399,999 Share of Freehold

020 8687 9787 | [turnersproperty.com](https://www.turnersproperty.com) | 105 London Road, Morden, Surrey, SM4 5HP

TURNERS

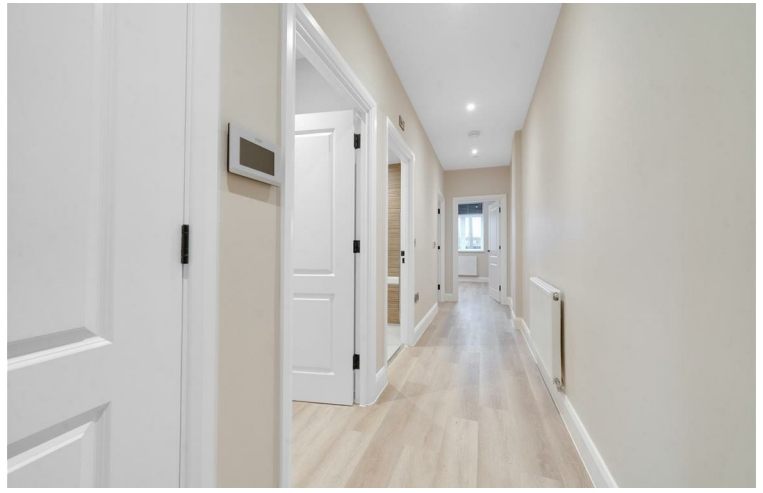




Full Description

Flat 4

Ocean House Cheam, has now been released for marketing. With 50% of the development already sold stc this two bedroom, ground floor flat is sure to attract a lot of attention. Especially with the added benefit of being Share of Freehold and having low service charges! Don't miss out on viewing this brand new property in the heart of Cheam Village

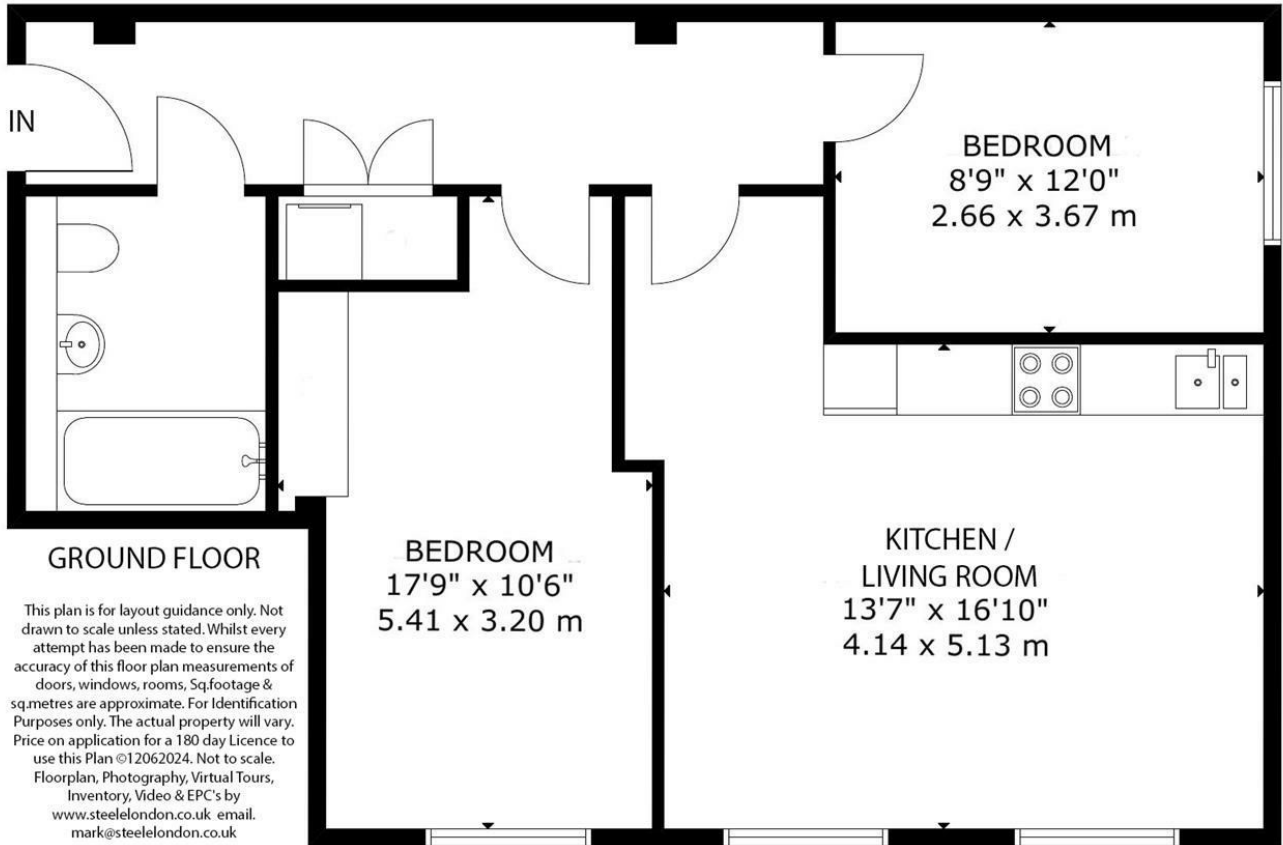


Key Features

- 2 Bedroom Ground Floor flat
- 1200 per annum service charge
- Share of freehold
- 999 year leases
- 50% now sold
- Close to Cheam Village
- Vibrant High Street inc Waitrose, Bars & Cafes & Gyms
- High Spec Finish Throughout



OCEAN HOUSE SM2
GROSS INTERNAL AREA
TOTAL: 62.sq.m - 672.sq.ft



Energy Efficiency Rating		Current	Potential
Very energy efficient - lower running costs			
(92 plus) A			
(81-91) B			
(69-80) C		74	74
(55-68) D			
(39-54) E			
(21-38) F			
(1-20) G			
Not energy efficient - higher running costs			
England & Wales		EU Directive 2002/91/EC	

Station Approach, Cheam, SM2
£399,999 Share of Freehold

020 8687 9787 | turnersproperty.com | 105 London Road, Morden, Surrey, SM4 5HP

