

TURNERS



Templecombe Way, Morden, SM4
£2,500 Per Calendar Month

020 8687 9787 | turnersproperty.com | 105 London Road, Morden, Surrey, SM4 5HP

TURNERS





Full Description

We are arranging viewings for Saturday the 11th of November between 10:00 - 11:30 please email info@turnersproperty.com to book your time slot.

PLEASE NOTE TO PASS THE REFERENCES YOU WILL NEED TO SHOW AN ANNUAL INCOME OF £75,000 PER ANNUM

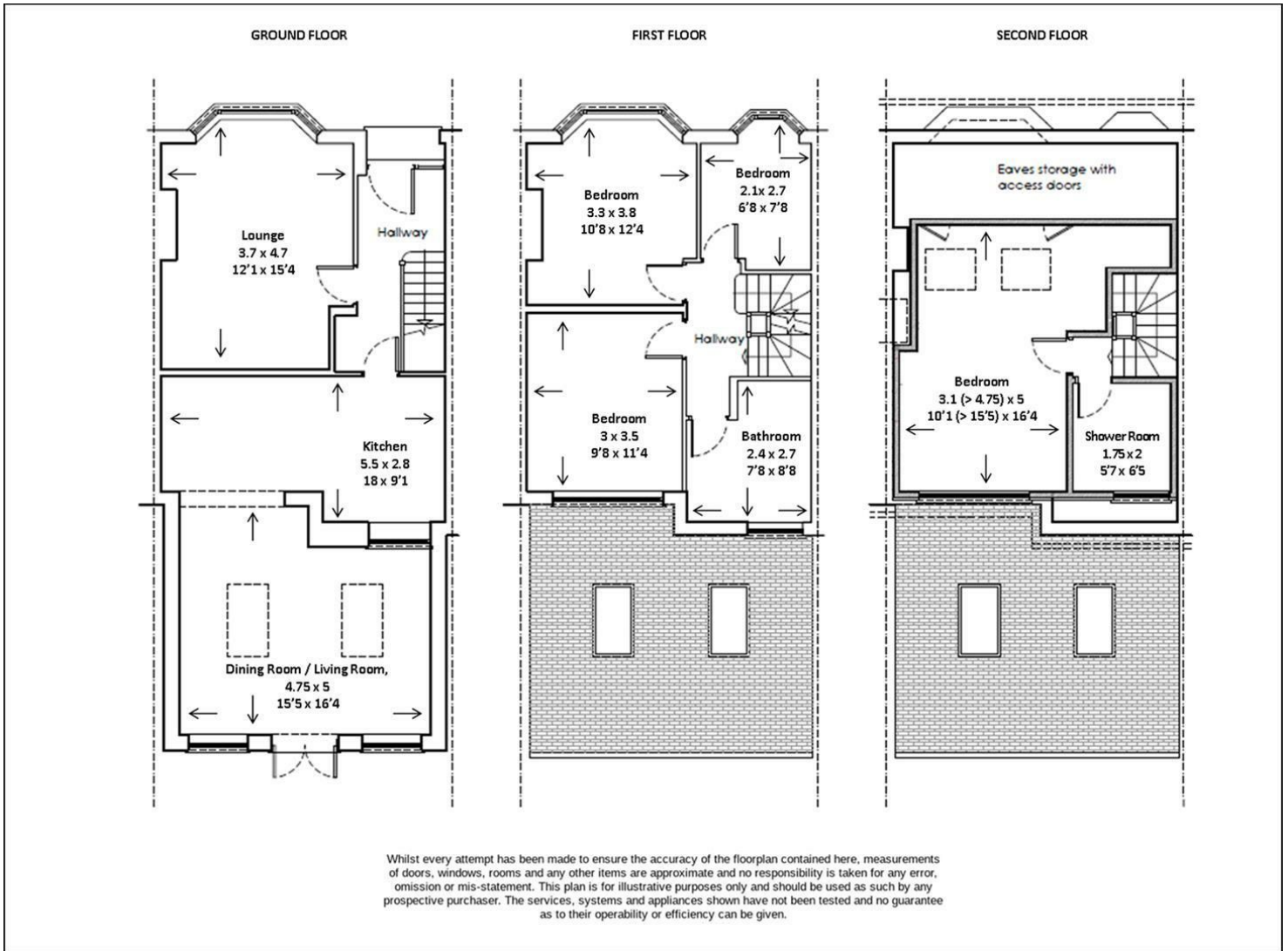
To let, a lovely 4-bedroom family home located in the popular Hillcross Area of Morden, SM4. Close to Morden tube station, Raynes Park railway station and local amenities, including parks, shops and supermarkets and new multi-million-pound, leisure centre.

Arranged over three floors including the converted loft area which was only completed last year, this mid-terrace house offers absolutely loads of space for family life. On the ground floor is a formal sitting room to the front (though currently utilised as a children's playroom) and the large kitchen spans the full-width of the house linking into the rear in the extension is a dining room - cum - family room with double-glazed doors leading out into the private garden.



Key Features

- 4 Bedrooms
- 2 Bathrooms
- Double Garage
- Large Ground Floor Extension
- Popular Location
- Air conditioning to Main Bedroom (Loft conversion)
- Close to OFSTED rate 'Good' Primary schools.
- EPC rating D



Energy Efficiency Rating		Current	Potential
Very energy efficient - lower running costs			
(92 plus) A			
(81-91) B			
(69-80) C			
(55-68) D		57	75
(39-54) E			
(21-38) F			
(1-20) G			
Not energy efficient - higher running costs			
England & Wales		EU Directive 2002/91/EC	

Templecombe Way, Morden, SM4
£2,500 Per Calendar Month

020 8687 9787 | turnersproperty.com | 105 London Road, Morden, Surrey, SM4 5HP

