

GROUND FLOOR
APPROX. FLOOR
AREA 794 SQ.FT.
(73.8 SQ.M.)

1ST FLOOR
APPROX. FLOOR
AREA 594 SQ.FT.
(55.2 SQ.M.)

TOTAL APPROX. FLOOR AREA 1388 SQ.FT. (129.0 SQ.M.)

Whilst every attempt has been made to ensure the accuracy of the floor plan contained here, measurements of doors, windows, rooms and any other items are approximate and no responsibility is taken for any error, omission, or mis-statement. This plan is for illustrative purposes only and should be used as such by any prospective purchaser. The services, systems and appliances shown have not been tested and no guarantee as to their operability or efficiency can be given.

Made with Metropix ©2014



132 Mostyn Road, Merton Park, SW19 3LR

TURNERS



132 Mostyn Road, Merton Park, SW19 3LR
£2,250 PCM

TURNERS



DESCRIPTION:

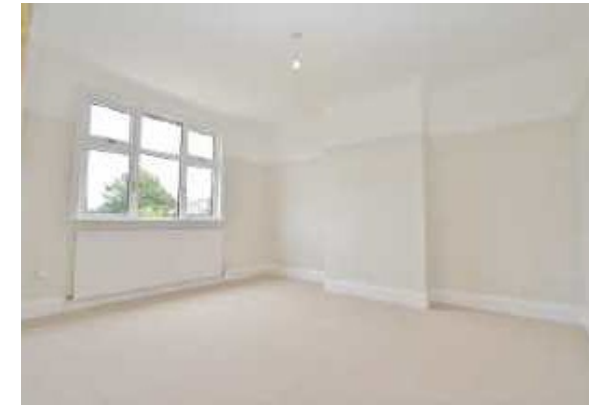
Having undergone refurbishment, Turners are pleased to offer this extremely spacious three bedroom end terrace family home. The property comprises two spacious receptions, a modern kitchen and luxury bathroom and a garage/garden room to the side. Further benefits include gas central heating, double glazing, off street parking and a large rear garden. The property is situated close to South Merton station and within walking distance of Morden town centre and the

PRIME FEATURES:

- Three bedrooms
- Two receptions
- Modern Kitchen
- Luxury bathroom
- Gas central heating
- Double glazing
- Off street parking
- Large rear garden
- Available - Now
- Unfurnished

By Appointment Only
Please Contact:

Turners 105 London Road Morden Surrey SM4 5HP
Tel 020 8687 9787 Fax 0208 685 0911
Email info@turnersproperty.com www.turnersproperty.com



- SALES
- LETTINGS
- FINANCIAL SERVICES