

TURNERS



Kelly Court 38 Fullerton Road, CR0

£1,400 Per Month

020 8687 9787 | turnersproperty.com | 105 London Road, Morden, Surrey, SM4 5HP

TURNERS





Full Description

A well-presented one-bedroom second-floor apartment forming part of Kelly Court, a modern purpose-built residential development in a popular Croydon location.

The property is offered unfurnished and provides approximately 549 sq ft of accommodation, comprising a living room/kitchen, bedroom and bathroom. The flat is positioned on the top floor of the main building and would suit a single professional or couple looking for a modern home within easy reach of Croydon town centre and local amenities.

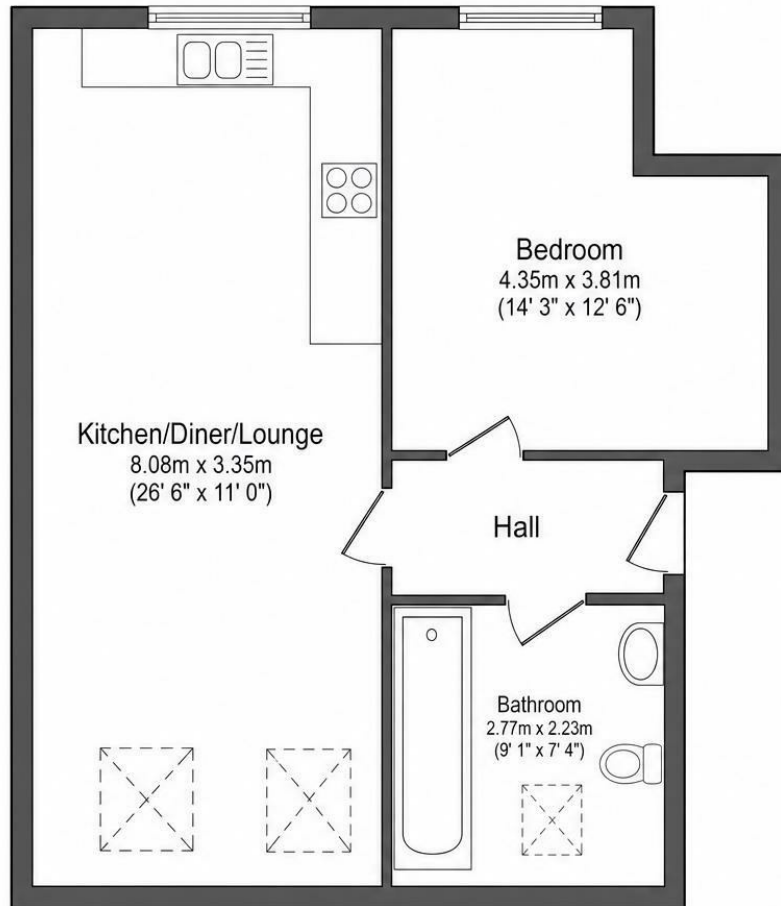
Kelly Court is situated on Fullerton Road, in an established residential area approximately three quarters of a mile from Croydon town centre. Local shops and amenities can be found along Lower Addiscombe Road, with road links nearby including the A222, A232 and A23.




Key Features

- Epc rating B
- Available from the 16th of July
- Second floor (top floor)
- Council tax rating C 2311.91 per annum before discounts
- Unfurnished

Approximate Area = 52.7 m² (567 sq.ft.) approx



Energy Efficiency Rating		
	Current	Potential
Very energy efficient - lower running costs		
(92 plus) A		
(81-91) B	82	82
(69-80) C		
(55-68) D		
(39-54) E		
(21-38) F		
(1-20) G		
Not energy efficient - higher running costs		
England & Wales	EU Directive 2002/91/EC 	

Kelly Court 38 Fullerton Road, CR0

£1,400 Per Month

020 8687 9787 | turnersproperty.com | 105 London Road, Morden, Surrey, SM4 5HP

TURNERS

