

TURNERS



Grosvenor Court, London Road, Morden, SM4

£1,600

0208 687 9787 | [iturnersproperty.com](http://iturnersproperty.com) | 105 London Road, Morden, Surrey, SM4 5HP

TURNERS



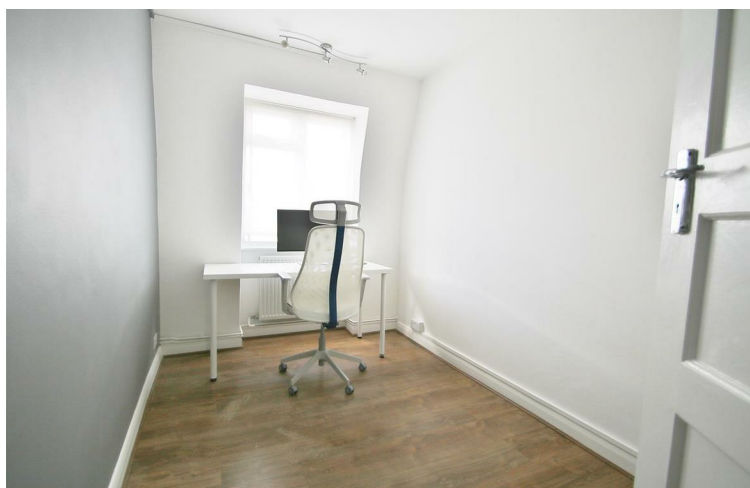




## Full Description

MORDEN WITHIN MINUTES! A well presented two bedroom top floor purpose built flat offering good sized accommodation to include a large lounge, modern kitchen and bathroom with shower cubicle. Further benefits include gas central heating, double glazing, an entry phone . The property is ideally situated for commuting with the Northern Line underground station and bus station located within short walking distance, Available - From the 1st of October, unfurnished.

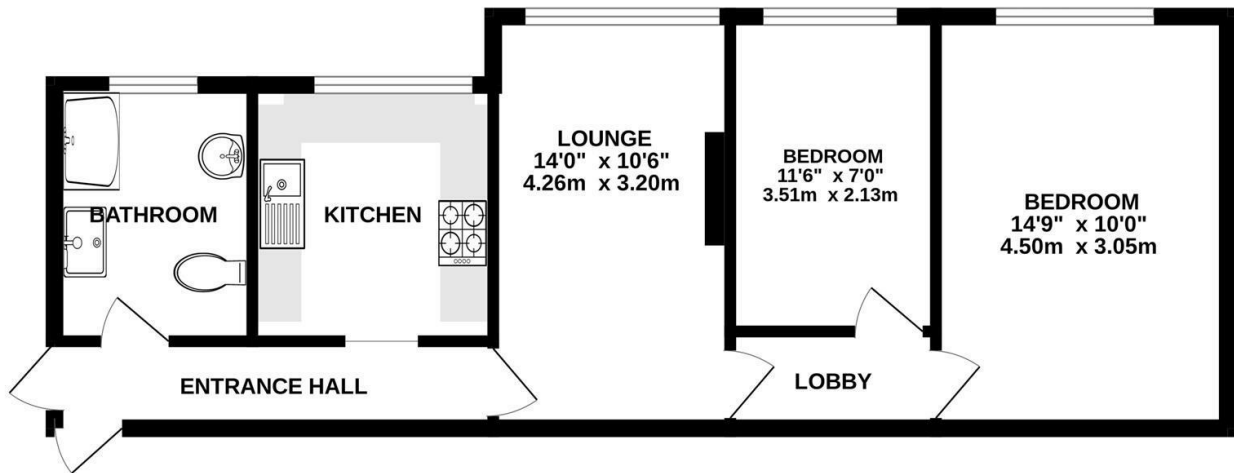
The referencing would require tenants to earn 30 times the monthly rent. Which is £48,000 per annum.



## Key Features

- 2 bedrooms
- Top floor
- Shower cubicle
- Good condition
- Council tax band C 1856.38 per annum
- Communal gardens
- Minutes walk to the tube station
- Available from the 1st of October
- Unfurnished
- EPC rating D

## TOP FLOOR



Whilst every attempt has been made to ensure the accuracy of the floorplan contained here, measurements of doors, windows, rooms and any other items are approximate and no responsibility is taken for any error, omission or mis-statement. This plan is for illustrative purposes only and should be used as such by any prospective purchaser. The services, systems and appliances shown have not been tested and no guarantee as to their operability or efficiency can be given.  
Made with Metropix ©2025

Energy Efficiency Rating		
	Current	Potential
Very energy efficient - lower running costs		
(92 plus) <b>A</b>		
(81-91) <b>B</b>		
(69-80) <b>C</b>		
(55-68) <b>D</b>	61	67
(39-54) <b>E</b>		
(21-38) <b>F</b>		
(1-20) <b>G</b>		
Not energy efficient - higher running costs		
England & Wales	EU Directive 2002/91/EC	

Grosvenor Court, London Road, Morden, SM4  
£1,600

0208 687 9787 | [turnersproperty.com](https://turnersproperty.com) | 105 London Road, Morden, Surrey, SM4 5HP

TURNERS

