

TURNERS



Kelly Court 38 Fullerton Road, CR0
£1,450 Per Month

020 8687 9787 | turnersproperty.com | 105 London Road, Morden, Surrey, SM4 5HP

TURNERS



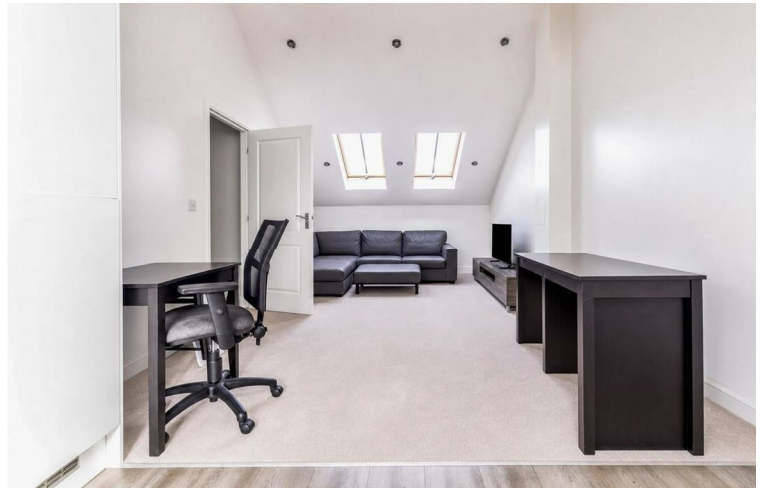


Full Description

We are arranging viewings for Saturday 30th May between 09:30 and 10:30. Please email us to book your viewing appointment.

Please note that in order to pass the referencing process, applicants will need to show a minimum annual income of £43,500, which is 30 times the monthly rent.

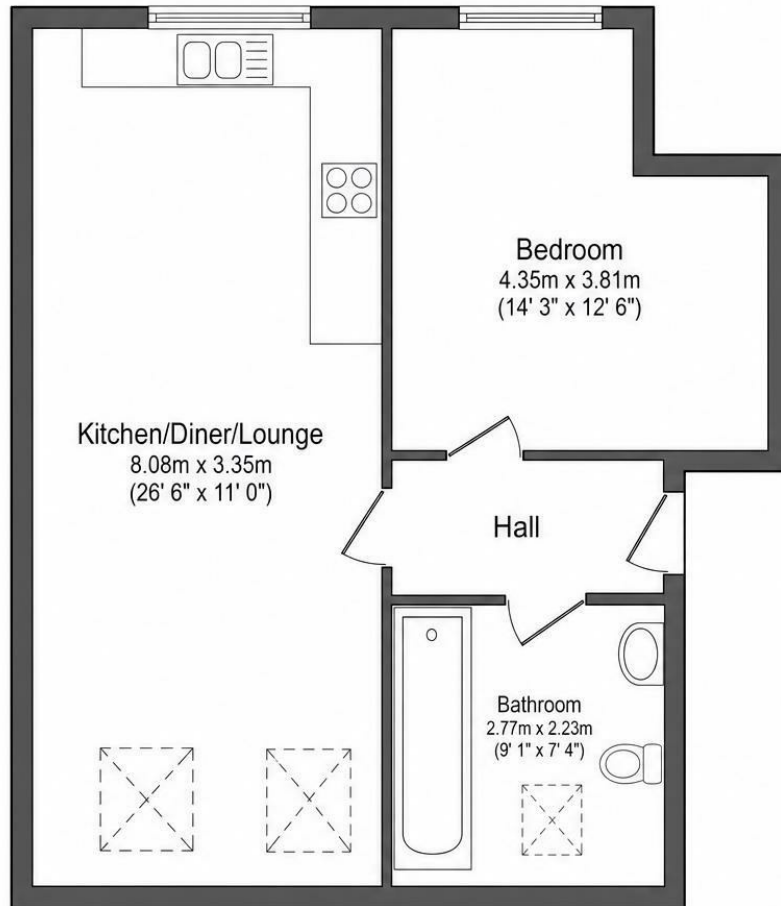
Positioned on a quiet residential road within easy reach of Croydon town centre (approx. ¼ mile), the property enjoys excellent connectivity into Central London and continues to see strong tenant demand from professional occupiers.



Key Features

- 1 bedroom
- Good order
- Close to shops
- Available now
- EPC rating B
- Top floor

Approximate Area = 52.7 m² (567 sq.ft.) approx



Energy Efficiency Rating		
	Current	Potential
Very energy efficient - lower running costs		
(92 plus) A		
(81-91) B	82	82
(69-80) C		
(55-68) D		
(39-54) E		
(21-38) F		
(1-20) G		
Not energy efficient - higher running costs		
England & Wales	EU Directive 2002/91/EC	

Kelly Court 38 Fullerton Road, CR0

£1,450 Per Month

020 8687 9787 | turnersproperty.com | 105 London Road, Morden, Surrey, SM4 5HP

TURNERS

