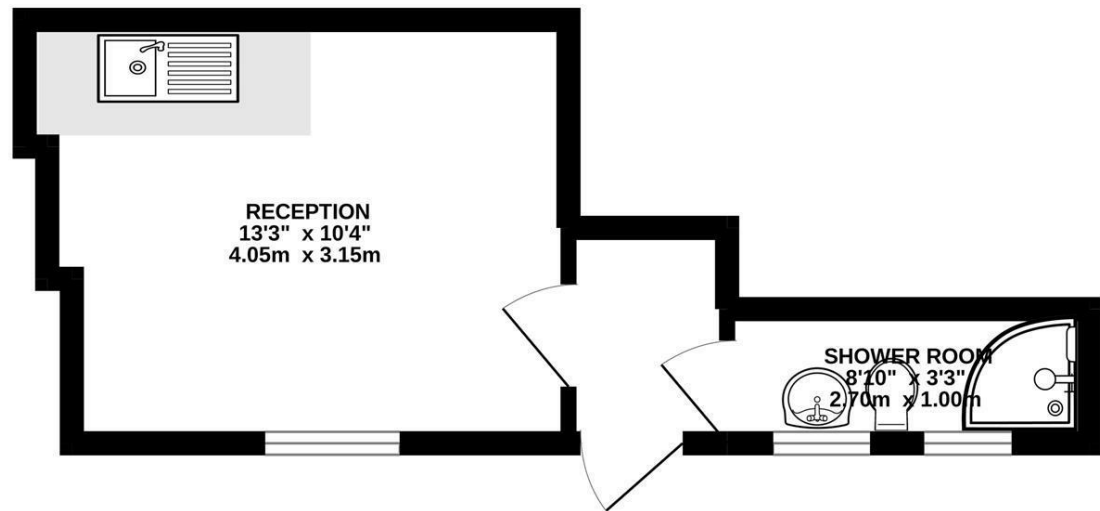



GROUND FLOOR  
180 sq.ft. (16.7 sq.m.) approx.



TOTAL FLOOR AREA: 180 sq.ft. (16.7 sq.m.) approx.  
Whilst every attempt has been made to ensure the accuracy of the floorplan contained here, measurements of doors, windows, rooms and any other items are approximate and no responsibility is taken for any error, omission or mis-statement. This plan is for illustrative purposes only and should be used as such by any prospective purchaser. The services, systems and appliances shown have not been tested and no guarantee as to their operability or efficiency can be given.  
Made with Metropix ©2022

Energy Efficiency Rating		Current	Potential
Very energy efficient - lower running costs			
(92 plus) <b>A</b>			
(81-91) <b>B</b>			
(69-80) <b>C</b>			
(55-68) <b>D</b>			
(39-54) <b>E</b>			
(21-38) <b>F</b>			
(1-20) <b>G</b>			
Not energy efficient - higher running costs			
<b>England &amp; Wales</b>	EU Directive 2002/91/EC		



Belmont Road, Wallington, SM6  
£775 Per Month

0208 687 9787 | turnersproperty.com | 105 London Road, Morden, Surrey, SM4 5HP

Belmont Road, Wallington, SM6  
£775 Per Month

0208 687 9787 | turnersproperty.com | 105 London Road, Morden, Surrey, SM4 5HP





[Full description](#)

[Key Features](#)