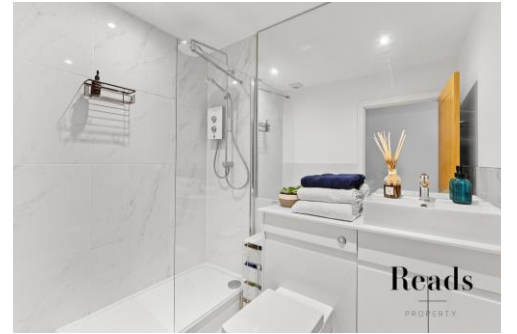




Fountain House, Cleeve Road, Leatherhead





7 Fountain House, Cleeve Road, Leatherhead, KT22 7LX

Apartment Seven is located at the front of the building on the ground floor and offers its own private entrance. Once inside you are greeted with the open plan living space which is flooded with light, the kitchen is an attractive charcoal and white with marble effect worktops, Bosch Oven and Hob, an integrated undercounter fridge with small freezer compartment, ample kitchen storage space, two separate storage cupboards, leading through to the bedroom area which has a useful curtain for privacy, the shower room offers a large shower and a useful backlit LED mirror, marble effect tiles and vanity unit encased basin.

8 years remaining of the ICW build warranty. One allocated parking space. 123 years remaining on the lease.

Leatherhead is an affluent commuter town, located close to junction 9 of the M25 and with easy access to the A3, south coast and London. Trains run to London Victoria, Waterloo and London Bridge with a fastest journey time of 41 minutes.

Leatherhead benefits from a recently opened Waitrose supermarket and is a popular market town, undergoing significant investment through Transform Leatherhead. Local attractions include Bocketts Farm, Chessington World of Adventures, Epsom Downs and Box Hill.

*This brochure, including the description, floorplans and measurements therein do not form part of any contract and whilst every effort has been made to ensure accuracy this cannot be guaranteed.