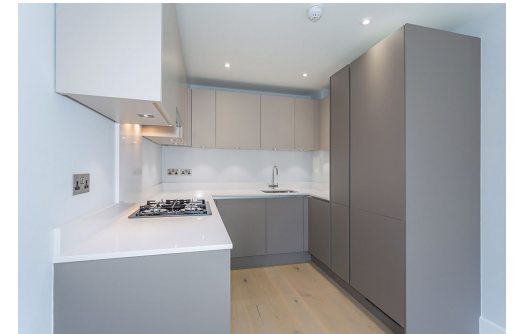




## **7 Oaks View, Court Lane, Epsom**

---



## 7 Oaks View, Court Lane, Epsom



## 7 Oaks View, Court Lane, Epsom

## **7 Oaks View, Court Lane, Epsom**

Set at the rear of the building overlooking the park, the apartment feels extremely spacious and light. The kitchen, living and dining area benefits from floor to ceiling windows. This gives a bright space for daytime living and a space that can be converted to a cosy area to unwind in or entertain.

The kitchen is designed and made in Germany, appliances are Smeg. Integral dishwasher, fridge/ freezer and Blanco Zeus Silestone worktops. The Stainless steel sink has a Quooker flex boiling tap.

Offering one double bedrooms and a stunning bathroom which is a great size with large Villeroy and Boch bath and shower over, glass door, heated towel rail, matching WC and basin with vanity mirror over.

Throughout the apartment there is under floor heating with solid wood Scandic Fjord flooring.

Oaks View is situated in a quiet yet accessible part of Epsom. It is moments from the busy town with its railway station and transport links, shops and a wealth of restaurants to choose from. You can access central London easily and also feel the space and tranquillity of all that Surrey has to offer with its countless opportunities to step outside into park and woodlands.

999yr lease and peppercorn ground rent.

Website: [www.reads-property.com](http://www.reads-property.com)

Telephone: 01372 308963

Email: [hello@reads-property.com](mailto:hello@reads-property.com)

Fetcham Park House, Lower Road, Fetcham, Leatherhead, Surrey, KT22 9HD

\*This brochure, including the description, floorplans and measurements therein do not form part of any contract and whilst every effort has been made to ensure accuracy this cannot be guaranteed.

## **7 Oaks View, Court Lane, Epsom**

---