

Treetops Apartments.



Welcome to Treetops Apartments.

Brought to you by respected developer Platinum Surrey Homes, we are delighted to present Treetops Apartments, Leatherhead.

Situated in the heart of Leatherhead Town Centre, this exclusive development of nine well appointed and carefully designed apartments is perfectly suited for today's busy and varied lifestyles.

Treetops Apartments provide a great opportunity whether you're a first time buyer, a savvy investor, a busy commuter after convenience for the city or looking for an easy to manage 'lock up and leave' property.

Each apartment is finished to Platinum Surrey Homes usual high standard, with contemporary features like electric underfloor heating and video entry systems creating modern, comfortable and stylish living spaces.

Arranged over four storeys, the apartments enjoy spectacular views over Leatherhead and the Surrey countryside beyond, and with a host of additional benefits such as private balconies, ensuite bathrooms and parking, you're sure to find your ideal apartment at Treetops Apartments.

DEVELOPED BY:

Platinum
SURREY HOMES

SALES AGENT:

Reads
PROPERTY



A Thriving Town.

Sitting on the pretty River Mole and surrounded by the beautiful rolling countryside of the Thames Valley and the spectacular Surrey Hills, Leatherhead is a picturesque town located 1 mile from junction 9 of the M25 at the edge of the capital.

Leatherhead enjoys a rich history with its official charter dating back to 1248. Nowadays it is a popular town with a thriving community and excellent travel connections. From Fountain House, access to the M25, junction 9 is just 1.2 miles away, direct trains to London take 48 minutes+ from Leatherhead station which is 0.5 miles from Fountain House and both Heathrow and Gatwick airports are within 30 minutes drive.++

With a bustling town centre and pedestrianised main shopping area, there's an eclectic mix of high street stores and independent shops, bars, cafés and restaurants. There's also a popular street market on Thursdays and Saturdays.

Outdoor space is plentiful, with a number of parks and gardens within easy reach of the town centre, and the surrounding countryside offers ample opportunity for walking, cycling or horse riding.

Leatherhead is currently undergoing somewhat of a renaissance, with a significant regeneration scheme set to further enhance the town.

The Leatherhead Theatre, which is also a cinema and arts centre, is located in the centre of town and provides year round live entertainment, exhibitions and screenings.

There is a lively community feel to the town with events and activities running throughout the year, including the Mole Valley Arts Alive Festival which takes place throughout October and celebrates music, literature, theatre, comedy, crafts and performance.

The Transform Leatherhead project is set to deliver many exciting improvements to the town including a new Urban Quarter, Riverside Quarter with improved outdoor space and a revitalised Retail & Leisure Quarter.





Specification.

With carefully selected materials and finishes throughout, Treetops Apartments provide a luxurious feel that you'll love to call home.

Kitchen

- Navy Blue Stylish base units
- Dove Grey wall units
- White/grey marble effect laminate worktop
- Single bowl stainless steel sink
- A rated Hotpoint integrated appliances

Heating

Electric underfloor heating with individual touchscreen thermostats

Lighting

- Recessed low energy LED spotlights for kitchens and Bathrooms
- Pendant fittings to reception areas and bedrooms

Decoration

- Walls to all areas painted in Dulux Supermatt White
- White matt emulsion to ceilings
- White Satinwood woodwork

Flooring

- Quick Step Impressive Ultra Soft Oak Light

Electrical

- Brushed chrome sockets and light switches
- Video entry system to all apartments
- Pre-wired for BT & Virgin

Bath / Shower rooms

- Vanity unit with integrated basin and push button flush toilet with soft close seat
- Heated chrome towel rail
- Grey ceramic wall tiles

Joinery

- Four Panel doors with chrome furniture

Parking

- Allocated parking spaces
- Bike store

Amenity Space

- Private balconies to all apartments
- French Doors to all balconies

10 year warranty

Your property comes with a comprehensive Global Home warranty, covering the structure for a full ten years





Help to Buy Scheme – How it works.

The Help to Buy scheme for new-build homes is a government-backed equity loan that allows first-time buyers in England to purchase a property.

The scheme applies only to your main residence in which you live and cannot be used to purchase a second home.

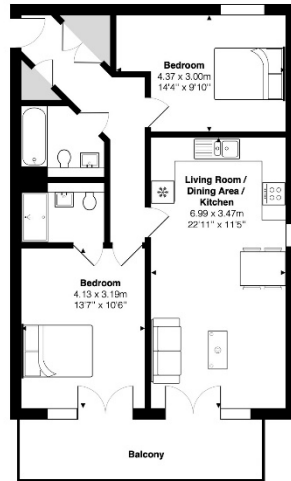
A deposit of at least 5% of the purchase price is required. You can borrow up to 20% of the purchase price (or 40% in London). This amount is interest-free for the next five years.





Apartment Layouts.

Apartments 2,4 & 7



Ground Floor Flat

Station Road, Leatherhead

Total Area: 69.2 m² ... 745 ft² (excluding balcony)

FOR ILLUSTRATIVE PURPOSES ONLY.

Whilst every attempt has been made to ensure the accuracy of the floor plan shown, all measurements, positioning, fixtures, features, fittings and any other data shown are an approximate interpretation for illustrative purposes only and are not to scale.

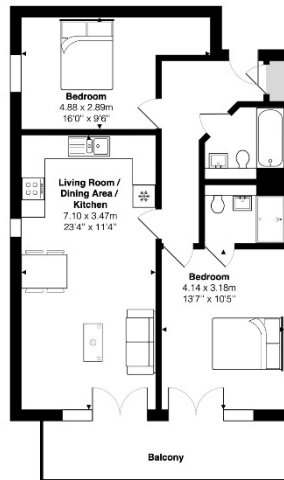
No responsibility is taken for any error, omission, mis-statement or use of data shown.

The above statement applies to both 'Still Moving London LTD' and the Company or individual displaying this floor plan.

Unauthorised reproduction prohibited.

AD Still Moving London LTD (www.stillmoving.london)

Apartment 1,3 & 6



Ground Floor Flat

Station Road, Leatherhead

Total Area: 66.9 m² ... 720 ft² (excluding balcony)

FOR ILLUSTRATIVE PURPOSES ONLY.

Whilst every attempt has been made to ensure the accuracy of the floor plan shown, all measurements, positioning, fixtures, features, fittings and any other data shown are an approximate interpretation for illustrative purposes only and are not to scale.

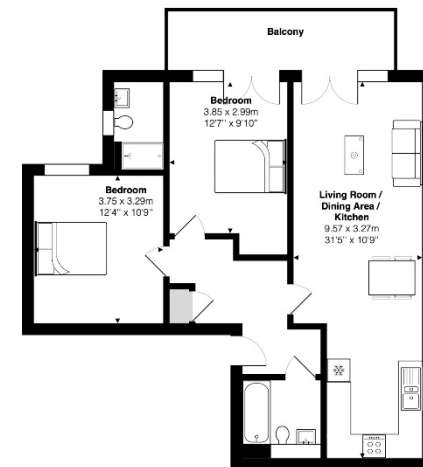
No responsibility is taken for any error, omission, mis-statement or use of data shown.

The above statement applies to both 'Still Moving London LTD' and the Company or individual displaying this floor plan.

Unauthorised reproduction prohibited.

AD Still Moving London LTD (www.stillmoving.london)

Apartments 5 & 8



First Floor Flat

Station Road, Leatherhead

Total Area: 71.4 m² ... 768 ft² (excluding balcony)

FOR ILLUSTRATIVE PURPOSES ONLY.

Whilst every attempt has been made to ensure the accuracy of the floor plan shown, all measurements, positioning, fixtures, features, fittings and any other data shown are an approximate interpretation for illustrative purposes only and are not to scale.

No responsibility is taken for any error, omission, mis-statement or use of data shown.

The above statement applies to both 'Still Moving London LTD' and the Company or individual displaying this floor plan.

Unauthorised reproduction prohibited.

AD Still Moving London LTD (www.stillmoving.london)

Platinum
SURREY HOMES

www.platinumsurrey.com

Reads

—
PROPERTY

www.reads-property.com