



28 Northrepps Road, Cromer
£290,000

**MILLERS**



28 Northrepps Road

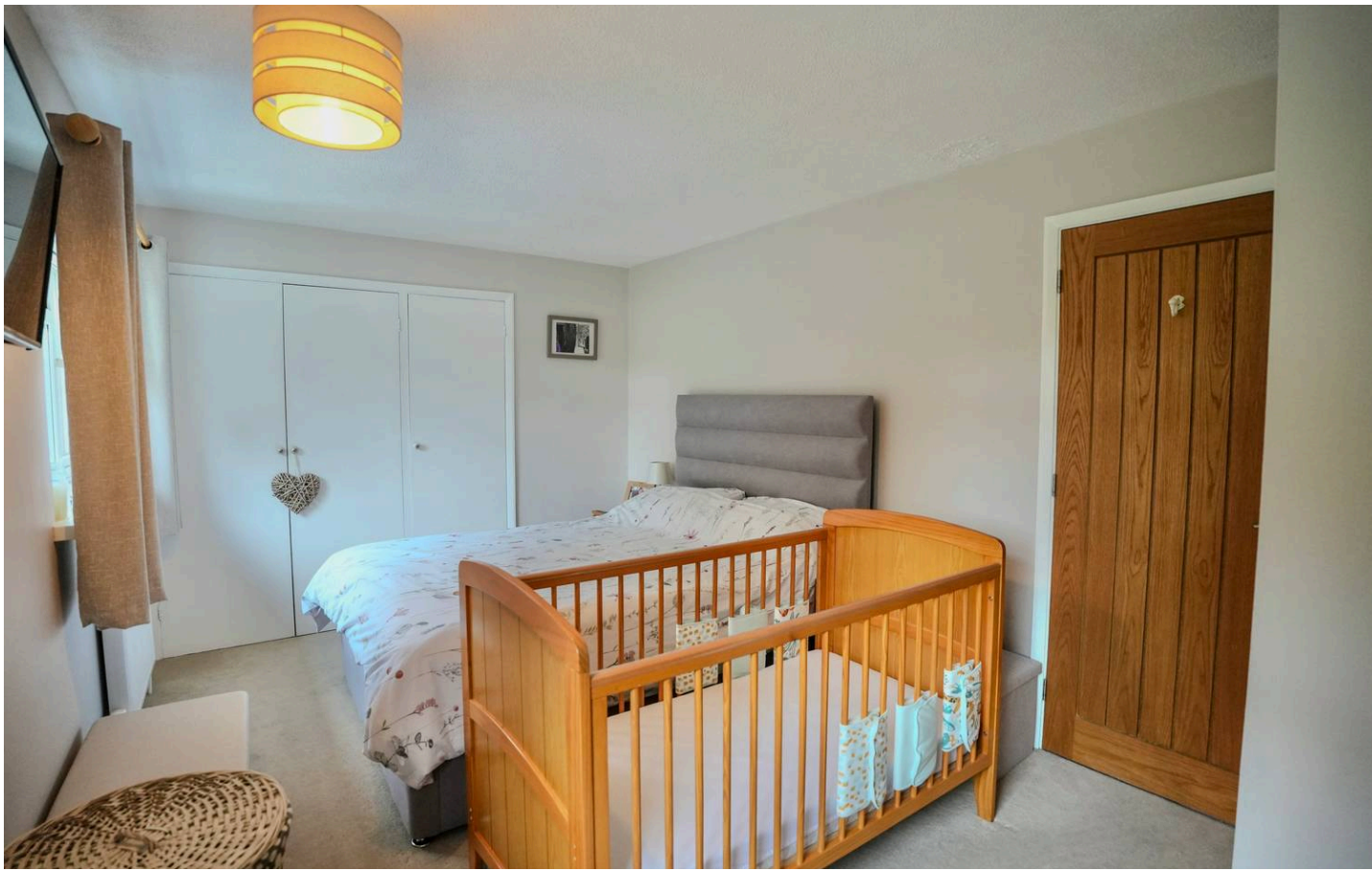
Cromer, NR27

Millers are delighted to present this well-presented two bedroom end of terrace home, ideally located on Northrepps Road on the outskirts of Cromer. Perfectly positioned for those who enjoy both coastal and countryside walks, the property also offers easy access to local amenities and excellent transport links. The spacious accommodation includes a welcoming entrance porch, hallway, and a generous lounge/diner which opens into an impressive conservatory, creating a light and airy living space. The modern kitchen is complemented by a practical utility room, completing the ground floor layout.

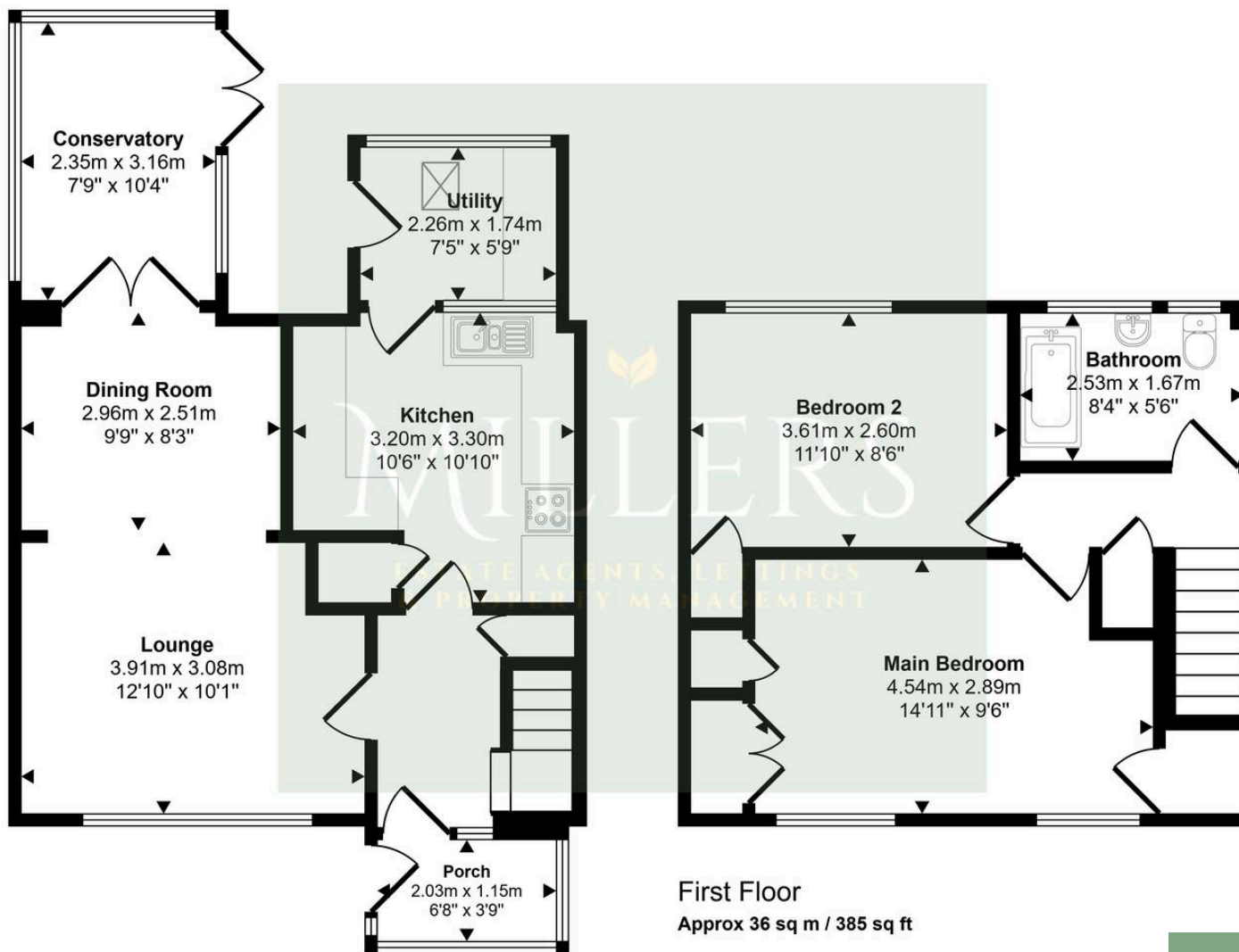
Upstairs, the landing provides access to all rooms, including two well-proportioned bedrooms, both featuring built-in wardrobes. The main bedroom is particularly spacious, offering an excellent range of built-in wardrobes and an additional storage cupboard, while the well-appointed bathroom completes the first-floor accommodation.

Externally, the property benefits from a small front garden and a brick-paved driveway providing off-road parking for two to three vehicles. The fully enclosed rear garden offers a delightful outdoor retreat with a lawned area, a paved patio ideal for entertaining, and a brick-built outbuilding with potential to convert into a home office (subject to necessary consents). Early viewing is highly recommended to fully appreciate all that this lovely home has to offer. Call Millers to arrange your viewing today.





Approx Gross Internal Area
87 sq m / 935 sq ft



Ground Floor
Approx 51 sq m / 551 sq ft

First Floor
Approx 36 sq m / 385 sq ft

This floorplan is only for illustrative purposes and is not to scale. Measurements of rooms, doors, windows, and any items are approximate and no responsibility is taken for any error, omission or mis-statement. Icons of items such as bathroom suites are representations only and may not look like the real items. Made with Made Snappy 360.

