



10 Westcliff Avenue, Cromer
£530,000





10 Westcliff Avenue

Cromer, NR27

Westcliff is a beautifully renovated 1930s Art Deco home, showcasing tastefully designed interiors inspired by its architectural heritage. Ideally positioned just minutes from the beach and within easy reach of Cromer's vibrant town centre, it is perfectly suited as a stylish family home, relaxing coastal retreat or income-generating holiday let. Currently let as an Airbnb and private holiday home, the property has proved extremely popular with guests. Buyers may also have the option to acquire it turnkey with furnishings, by separate negotiation.

The ground floor flows from a generous entrance hall into a bright lounge featuring an original Art Deco fireplace and large bay window, and into a well-proportioned dining room with French doors opening onto the garden. The kitchen/breakfast room is a generously sized space with tastefully fitted units, room for a small dining table and chairs, and direct access to the outdoor kitchen and patio. Completing this level is a convenient ground-floor WC. Upstairs, there are four bedrooms, two spacious doubles and two singles, all arranged off the landing, each enjoying either sea views to the front or peaceful garden outlooks to the rear. The luxurious family bathroom features a freestanding bath, large walk-in rainfall shower, wash hand basin, wall-mounted WC, underfloor heating and elegant brass fittings.

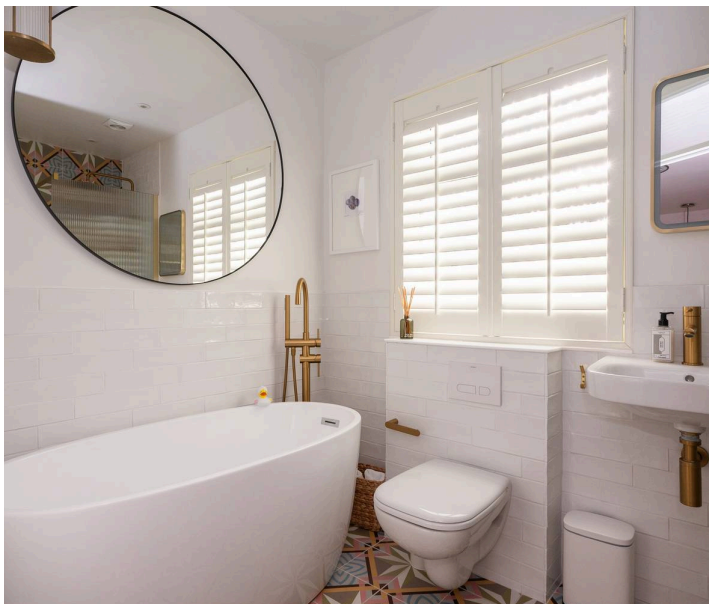




The outdoor space at Westcliff is truly exceptional, designed for both coastal living and entertaining. A stunning dining patio with a handmade outdoor kitchen, complete with a butler-style sink, dedicated BBQ housing and space for a pizza oven, sits alongside a hot-and-cold outdoor rainfall shower, perfect after days on the beach. The garden includes a lawn, mature planting, a garden shed and a second sun terrace ideal for relaxing in the summer months. To the front, a gravelled driveway provides parking for up to three cars and includes a wall-mounted EV charger.

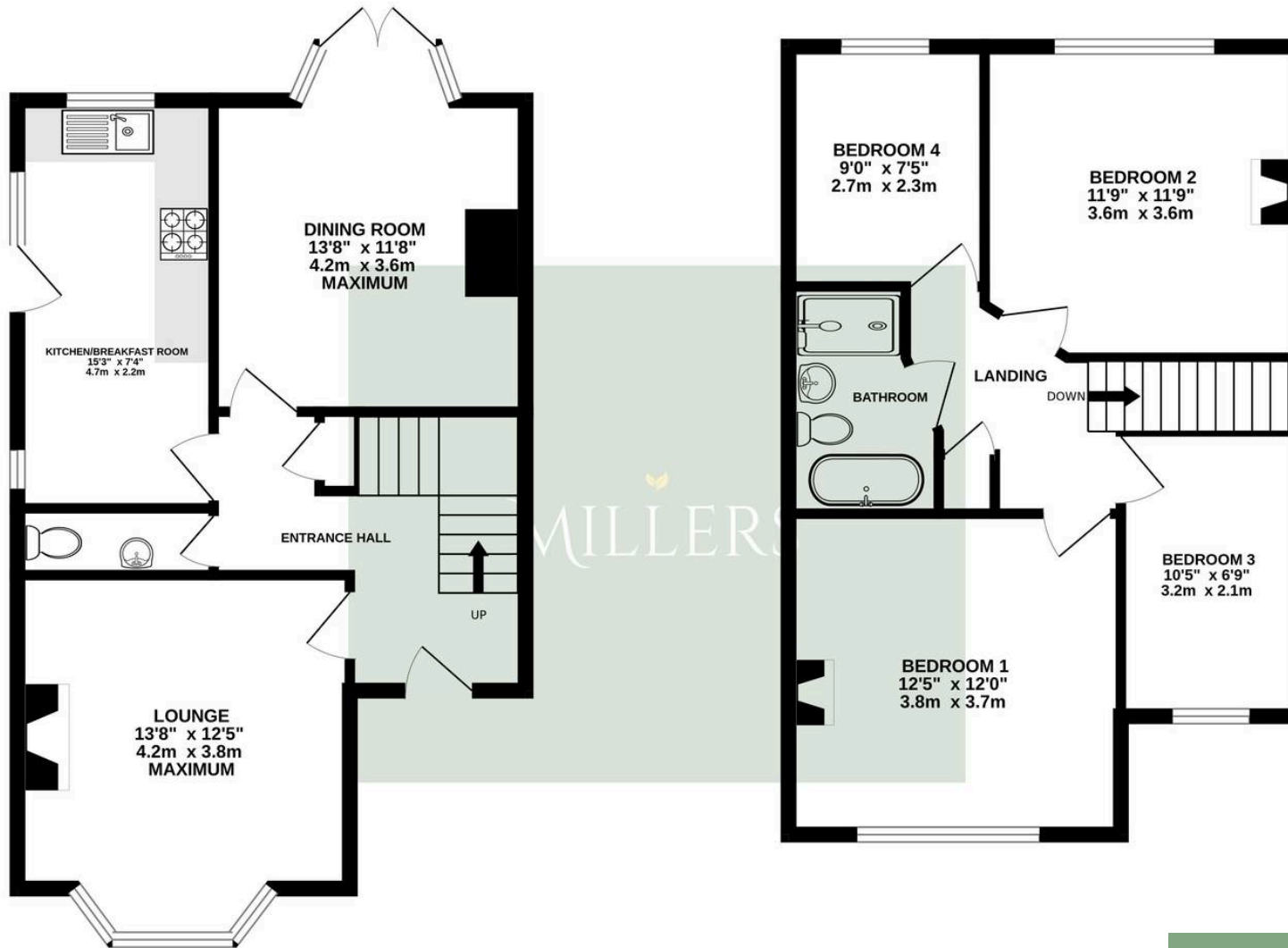
Cromer remains one of North Norfolk's most desirable coastal towns, known for its sandy beaches, dramatic cliffs and rich maritime heritage. Residents can enjoy the iconic Victorian pier, the Pavilion Theatre's traditional end-of-the-pier shows, and easy access to the Deep History Coast Discovery Trail and the famous Cromer Shoal Chalk Bed. The town offers an excellent selection of pubs, cafés, restaurants, delis and its celebrated Cromer crab, along with supermarkets, schools, a hospital, doctors' surgery, Royal Cromer Golf Club, Cromer Tennis Lawns, a mainline train station with services to Norwich and onward links to London, plus regular bus connections.

From Westcliff, all of Cromer's amenities are within easy reach, making it exceptionally convenient for both residents and holiday guests. Offered with no onward chain, the property is freehold and benefits from gas central heating, recently installed double glazing, a sustainable cork-render exterior and roof-mounted solar panels. Altogether, Westcliff presents a rare opportunity to acquire a thoughtfully restored Art Deco home in a superb coastal setting, with strong lifestyle and investment appeal. Words simply do not do this property justice, internal viewing is essential to truly appreciate everything on offer. Call Millers to view.



GROUND FLOOR
521 sq.ft. (48.4 sq.m.) approx.

1ST FLOOR
525 sq.ft. (48.7 sq.m.) approx.



TOTAL FLOOR AREA : 1045 sq.ft. (97.1 sq.m.) approx.

Whilst every attempt has been made to ensure the accuracy of the floorplan contained here, measurements of doors, windows, rooms and any other items are approximate and no responsibility is taken for any error, omission or mis-statement. This plan is for illustrative purposes only and should be used as such by any prospective purchaser. The services, systems and appliances shown have not been tested and no guarantee as to their operability or efficiency can be given.
Made with Metropix ©2025

