



Wayside Cottage, Walcott Road, Bacton

In Excess of £270,000

MILLERS



Wayside Cottage Walcott Road

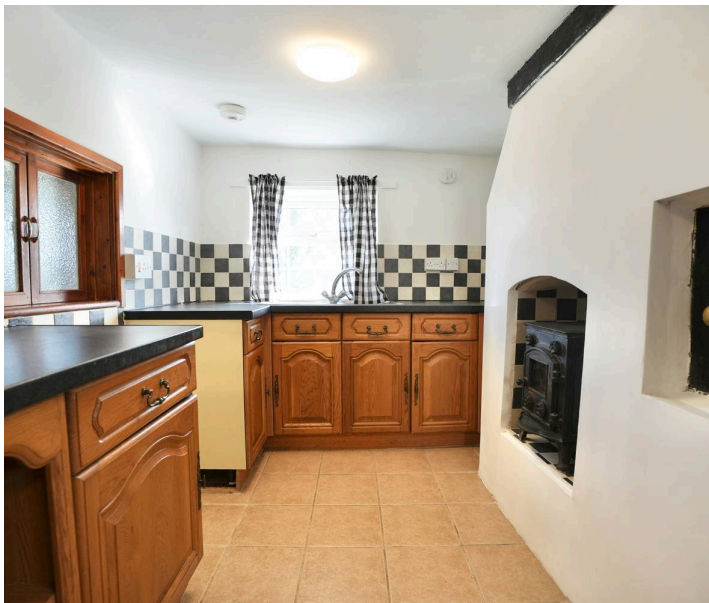
Bacton, Norwich

Description

Proudly sitting in a charming setting, Wayside Cottage is a wonderful period detached home brimming with character and original features. Step inside to discover comfortable living spaces that thoughtfully preserve the cottage's historic charm. Exposed beams and ledge and brace doors whisper tales of the past, while the living room's impressive inglenook fireplace, complete with a multifuel burner, creates a warm and inviting ambience. The well-equipped fitted kitchen features a convenient utility area, with a door that provides access to the rear of the building and the decked garden space. A generous-sized dining room and a stylish bathroom complete the ground floor accommodation. On the first floor, you will find the landing with potentially enough space for a small study area, windows to the front provide wonderful countryside views. The three generous-sized bedrooms complete the accommodation on the first floor.

Living Room

uPVC part double glazed entrance door to the front aspect, front and rear aspect windows, a feature of the living room is the inglenook fireplace with cast iron multifuel burner and beam over, exposed ceiling beams, wall lights, serving hatch to kitchen, wall mounted radiator, tiled flooring, carpeted stairs rising to the first floor, doors to the kitchen and the dining room.





Kitchen

Front aspect window, a range of fitted base kitchen units with work surfaces over, tiled splashbacks, inset stainless steel sink with mixer tap over and side drainer, space for freestanding cooker, wall mounted gas-fired boiler, chimney breast with feature bread oven, tiled flooring, exposed beams and open to the utility area.

Utility Area

Windows to the side and rear aspect, fitted work surface, space and plumbing for washing machine beneath, space for fridge, tiled splashbacks, tiled flooring, exposed beams and door to decked garden area.

Dining Room

Windows to the front and side aspect, feature fireplace, picture rail, wall mounted radiator, tiled flooring and door to the bathroom.

Bathroom

Window to the side aspect, fitted with a white three piece suite comprising side and end panelled bath with shower over and folding shower screen, low level WC, pedestal wash hand basin, fully tiled walls, tiled floor, wall mounted fan heater and ceiling light.

First Floor Landing

Two windows to the front aspect provide countryside views, exposed floorboards, wall mounted radiator, loft access hatch, doors to bedrooms 1, 2 and 3.

Bedroom 1

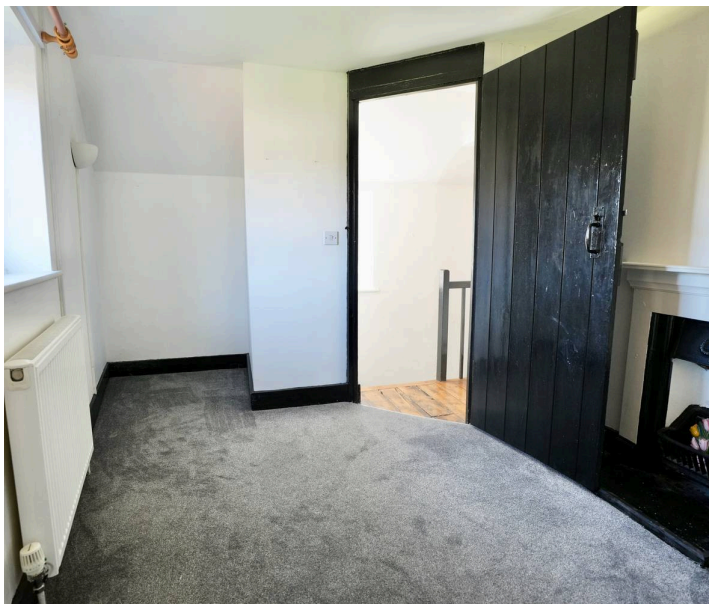
Windows to the front and side aspect, carpeted flooring, wall mounted radiator and exposed ceiling beams.

Bedroom 2

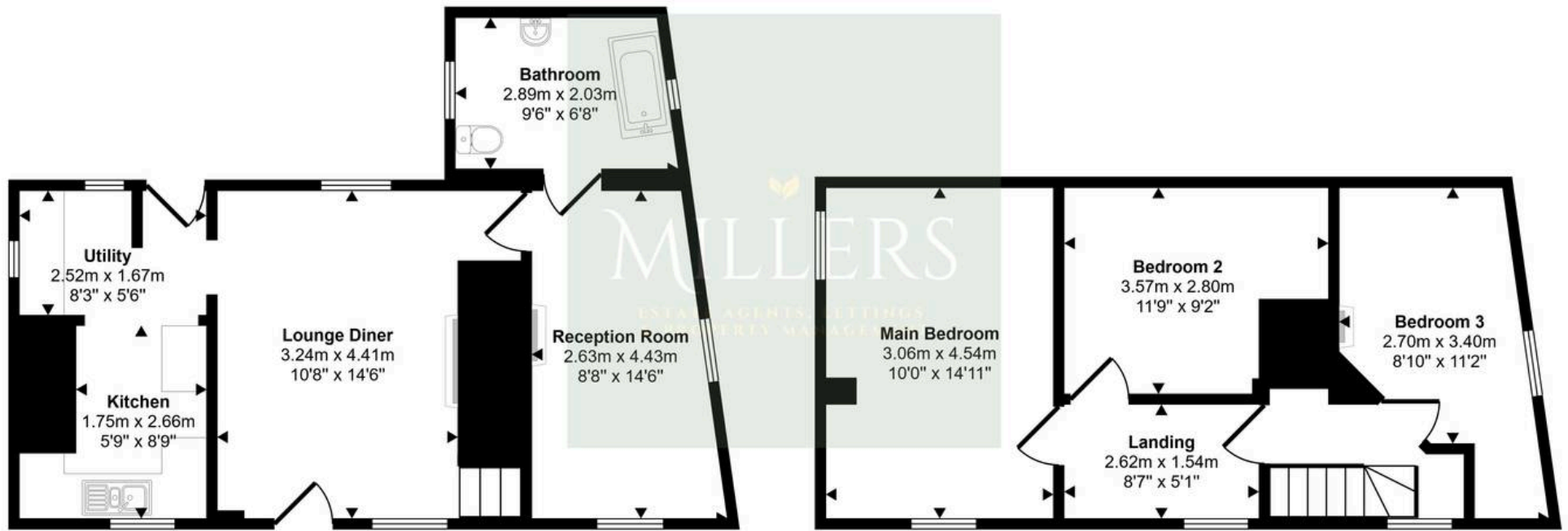
Exposed floorboards and exposed ceiling beams.

Bedroom 3

Window to the side aspect, carpeted flooring, wall mounted radiator and feature fireplace.



Approx Gross Internal Area
90 sq m / 964 sq ft



Ground Floor
Approx 47 sq m / 510 sq ft

First Floor
Approx 42 sq m / 454 sq ft

This floorplan is only for illustrative purposes and is not to scale. Measurements of rooms, doors, windows, and any items are approximate and no responsibility is taken for any error, omission or mis-statement. Icons of items such as bathroom suites are representations only and may not look like the real items. Made with Made Snappy 360.

