



**23 Mount Street, Cromer**  
**£375,000**





## 23 Mount Street

### Cromer

#### Entrance Hall

Wooden entrance door to the front aspect, tiled flooring, wall mounted radiator, stairs rising to the first floor, under stairs storage cupboard, doors to the dining room, kitchen and the store room/rear porch.

#### Dining Room

uPVC double glazed window to the front aspect, carpeted flooring, wall mounted radiator and feature fireplace.

#### Kitchen

uPVC double glazed door to the rear aspect leading to the courtyard style rear garden, tile effect laminate flooring, a range of fitted base and wall mounted units with work surfaces over, inset stainless steel sink with side drainer, built-in electric oven, inset four ring electric hob with extractor over, tiled splashbacks, breakfast bar area, display cabinet with cupboards below fitted within chimney breast alcove and wall mounted radiator.

#### Store Room/Rear Porch

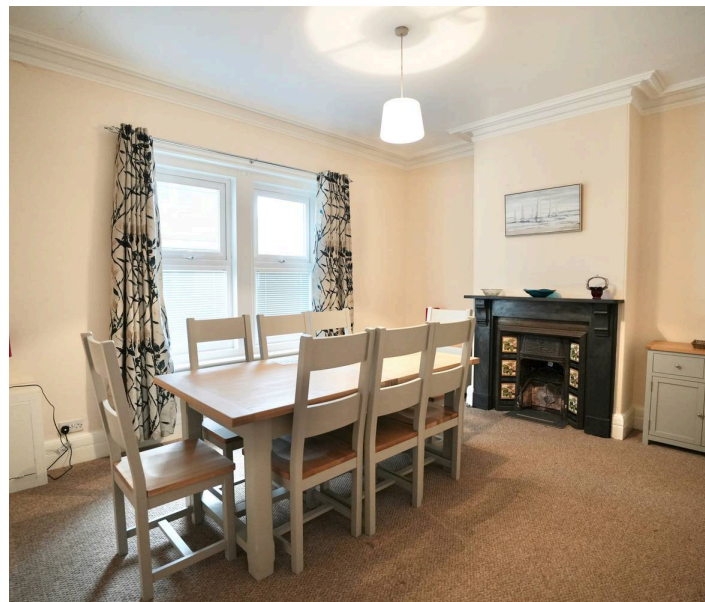
uPVC part double glazed door to the side aspect leading to the rear courtyard style garden and carpeted flooring.

#### First Floor Landing

Carpeted flooring, wall mounted radiator, stairs rising to the second floor, doors to the lounge, bedroom 1 and the family bathroom.

#### Lounge

uPVC double glazed bay window to the front aspect, carpeted flooring, two wall mounted radiators and feature fireplace.





### **Bedroom 1**

uPVC double glazed window to the rear aspect, carpeted flooring, wall mounted radiator, built-in wardrobe and feature fireplace.

### **Family Bathroom**

uPVC obscure double glazed window to the front aspect, tile effect vinyl flooring, part tiled walls, extractor fan, wall mounted radiator, dual flush WC, pedestal wash hand basin, P-shaped bath with shower bar and glazed shower screen over.

### **Second Floor Landing**

uPVC double glazed window to the rear aspect, carpeted flooring, loft access hatch, wall mounted radiator, doors to the shower room, bedrooms 2, 3 and 4.

### **Bedroom 2**

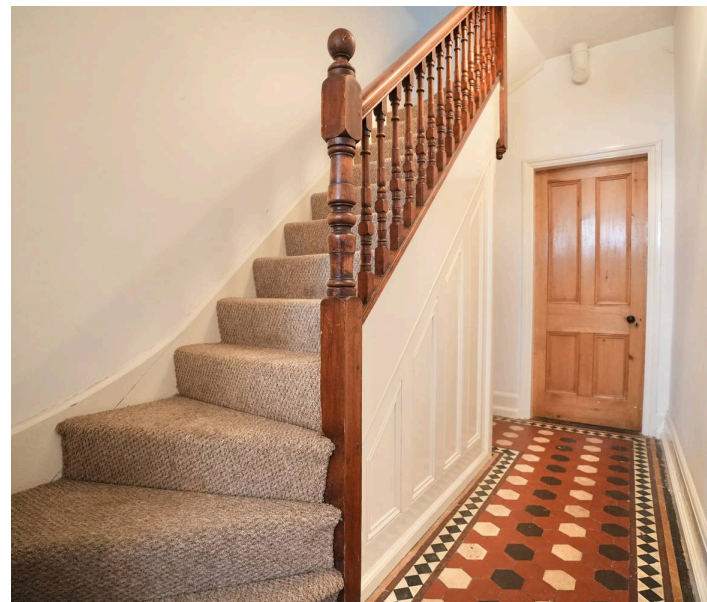
uPVC double glazed window to the front aspect, carpeted flooring, wall mounted radiator, feature fireplace and built-in wardrobe to the chimney alcove.

### **Bedroom 3**

uPVC double glazed window to the rear aspect, carpeted flooring, wall mounted radiator, feature fireplace, airing cupboard and built-in wardrobe to the chimney alcove.

### **Bedroom 4**

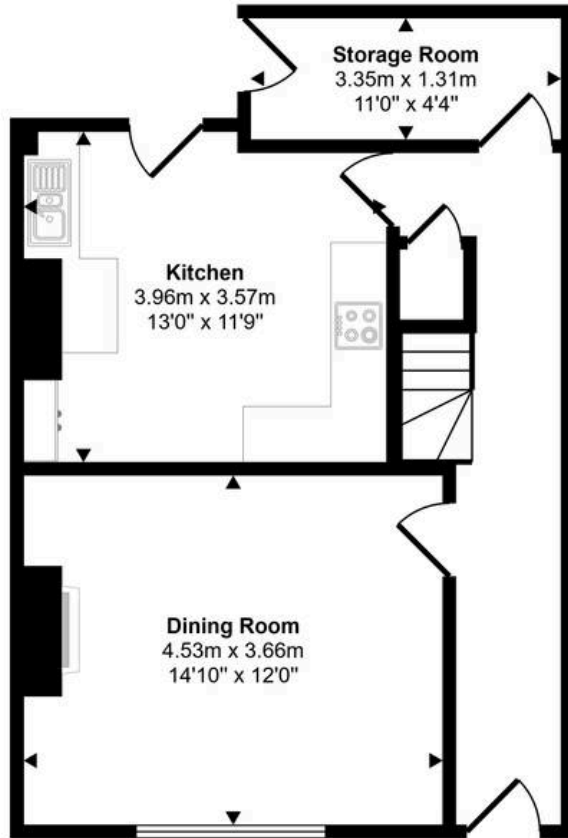
uPVC double glazed window to the front aspect, carpeted flooring, wall mounted radiator and built-in wardrobe.



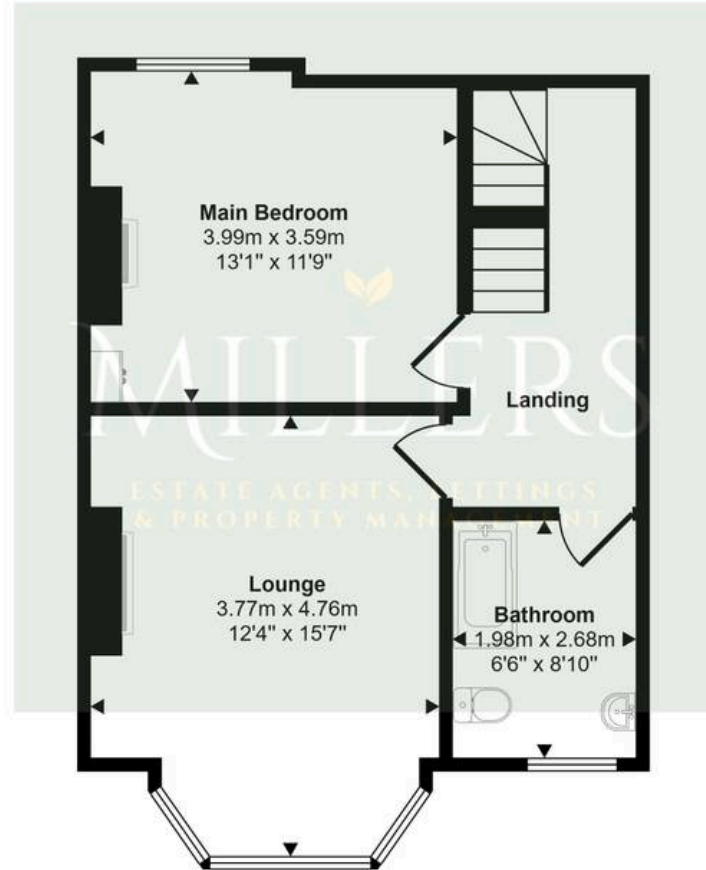
### **Shower Room**

Low level WC, part tiled walls, wall mounted wash hand basin, glazed shower cubicle with electric power shower, extractor fan, wall mounted heated towel rail and vinyl type flooring.

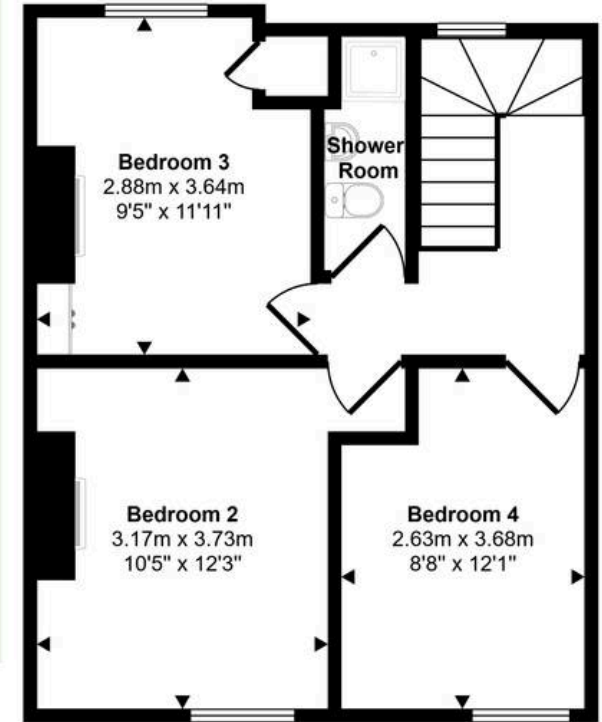
Approx Gross Internal Area  
137 sq m / 1474 sq ft



Ground Floor  
Approx 47 sq m / 505 sq ft



First Floor  
Approx 46 sq m / 497 sq ft



Second Floor  
Approx 44 sq m / 471 sq ft

This floorplan is only for illustrative purposes and is not to scale. Measurements of rooms, doors, windows, and any items are approximate and no responsibility is taken for any error, omission or mis-statement. Icons of items such as bathroom suites are representations only and may not look like the real items. Made with Made Snappy 360.

