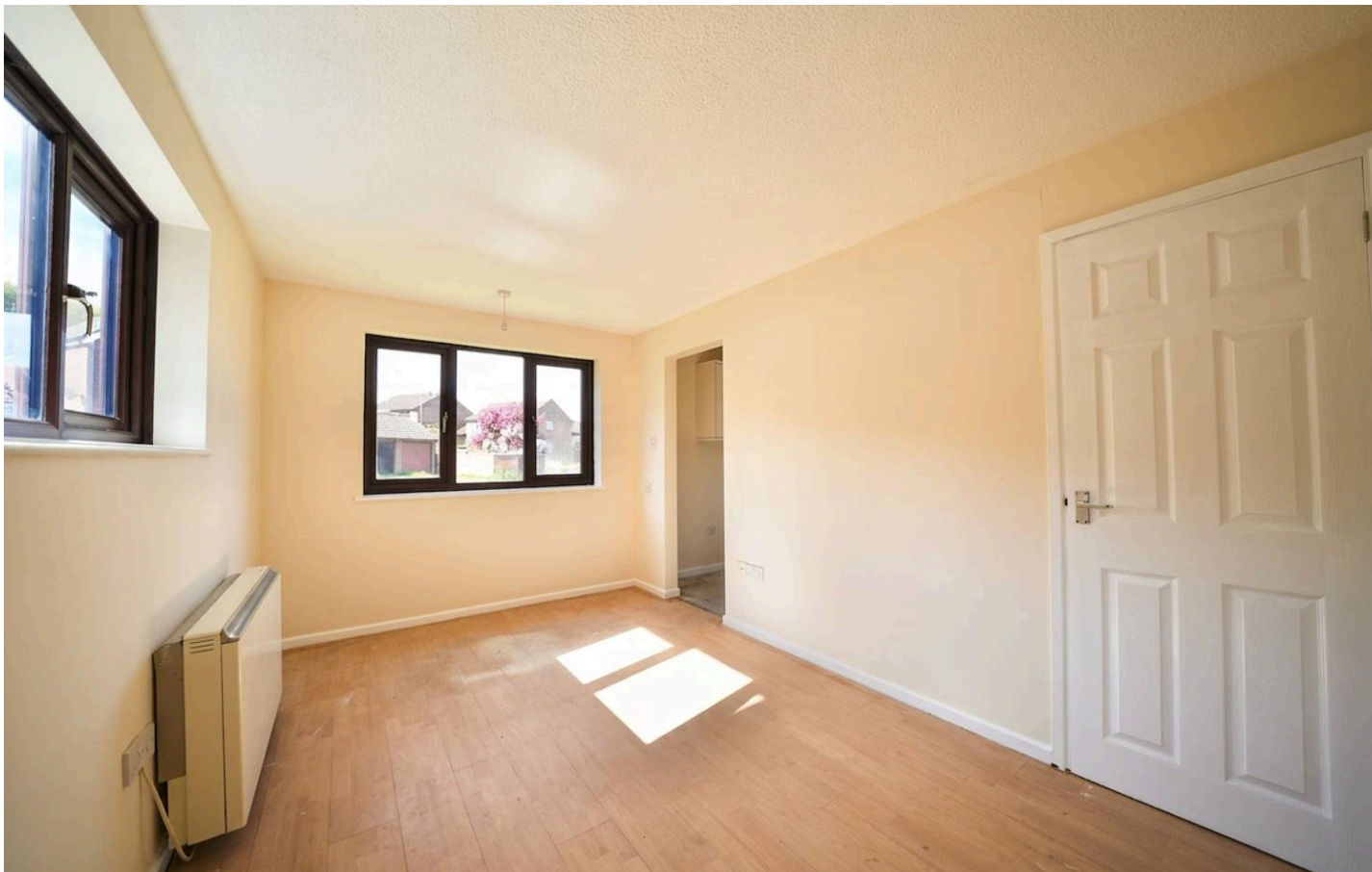




27 Henry Blogg Road, Cromer

In Excess of **£70,000**

**MILLERS**

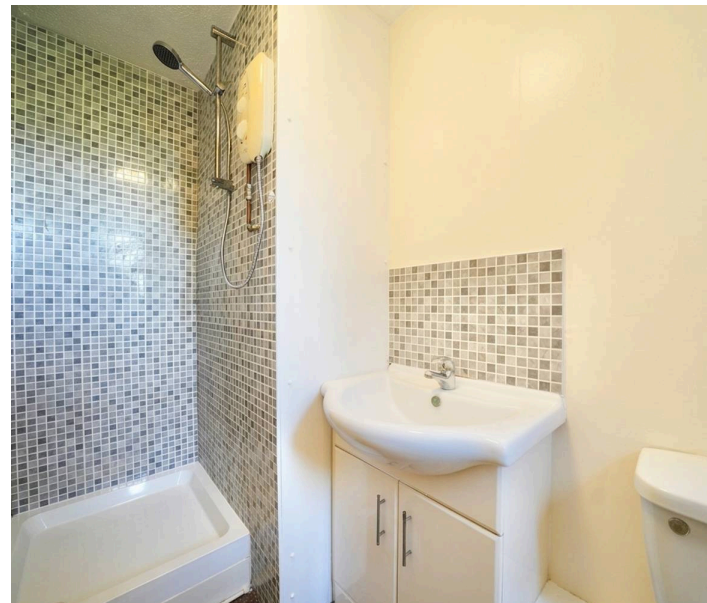


27 Henry Blogg Road

Cromer, Cromer

Situated in the popular location of Henry Blogg Road in Cromer, this well-presented ground-floor purpose-built studio flat offers a fantastic opportunity for first-time buyers or investors alike. Ideally positioned, the property benefits from easy access to the town centre, beautiful beaches, and excellent transport links. The entrance door opens directly into a bright and versatile living/dining/bedroom space with a modernised fitted kitchen leading off.

In addition, the property features a useful dressing room or study, offering flexibility for home working or extra storage, with a door leading to a shower room fitted with a contemporary three-piece suite. Externally, there is allocated parking to the rear, along with access to a communal lawned garden. Offered with no onward chain, viewings are highly recommended.



- Ground Floor Purpose-Built Studio Flat
- Easy Access to Town Centre, Beach, and Transport Links
- Bright and Versatile Living/Dining/Bedroom Space
- Modernised Fitted Kitchen
- Separate Dressing Room/Study Area
- Shower Room with Three-Piece Suite
- Allocated Parking to the Rear
- Communal Lawned Garden
- Offered with No Onward Chain
- Ideal First-Time Buy or Investment Opportunity



Communal Entrance

Communal entrance door to the front of the building, leading into the communal hall with a further entrance door to the flat.

Living/Dining/Bedroom

Dual aspect room with uPVC double glazed windows to the front and side aspect, wood effect flooring, night storage heater, TV point, telephone point, door to the inner lobby/dressing area and opening to the kitchen.

Kitchen

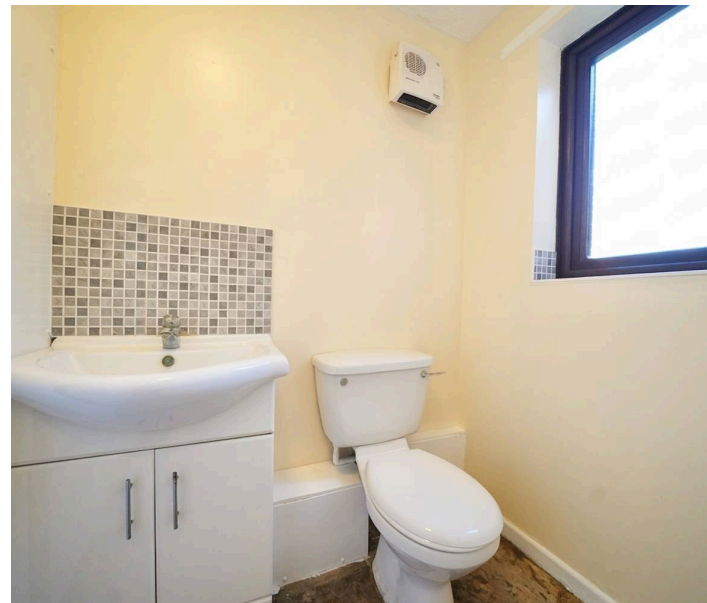
uPVC double glazed window to the side aspect, fitted base and wall mounted units with work surface over, inset stainless steel sink with mixer tap over and side drainer, space for cooker, tiled splashbacks, space for fridge freezer, space and plumbing for washing machine or dishwasher and built-in cupboard housing the electric water heater.

Lobby/Dressing Area/Study

Potential space for a dressing area or study space and door to the shower room.

Shower Room

uPVC obscure double glazed window to the side aspect, wall mounted electric fan heater, low level WC, vanity wash hand basin with cupboard below and tiled splashback, walk-in shower with power shower and tiled surround.



GROUND FLOOR
252 sq.ft. (23.4 sq.m.) approx.

