



**35 Cliff Drive, Cromer**  
**£575,000**



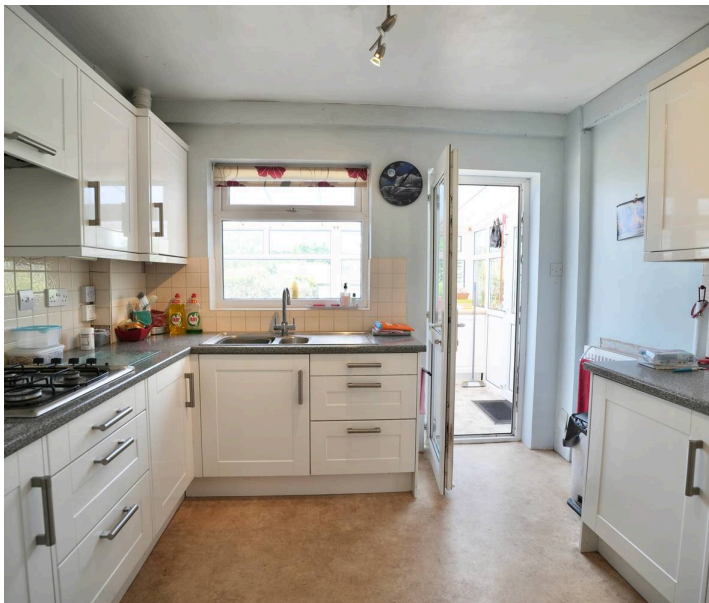


## 35 Cliff Drive

Cromer, Cromer

Situated on the highly sought-after and rarely available Cliff Drive, one of Cromer's most prestigious residential roads, this four-bedroom detached chalet bungalow enjoys a prime position just a short stroll from the seafront and vibrant town centre. Set within generous grounds of approximately a quarter of an acre (STMS), the property offers a rare opportunity to secure a deceptively spacious home in an exceptional coastal location, with exciting potential for further extensions or development (subject to the necessary permissions).

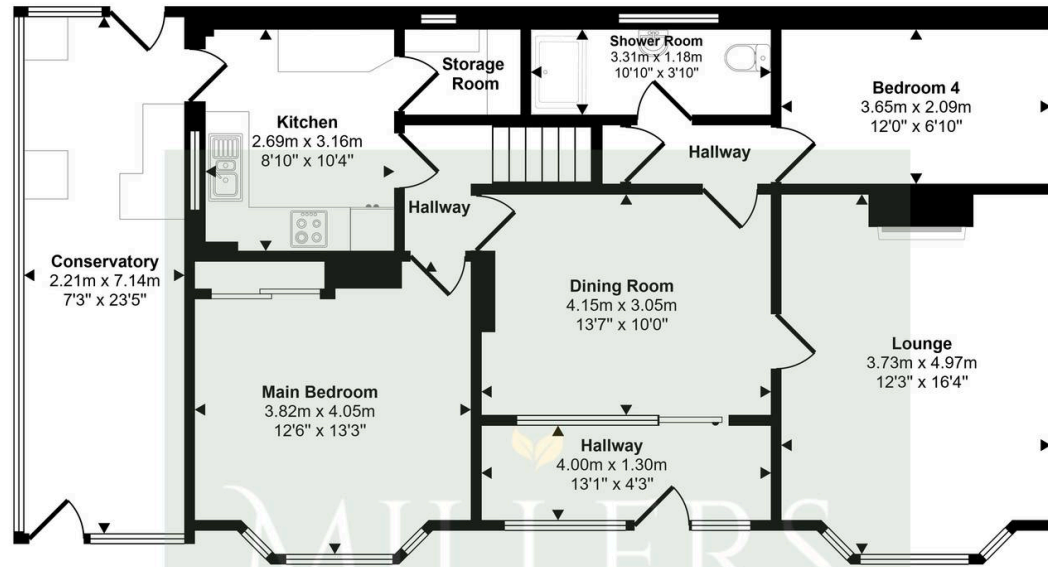
The well-appointed ground floor accommodation features a welcoming entrance hall, two bedrooms, a generously sized lounge, dining room, shower room, conservatory, and a kitchen complete with a practical pantry. Upstairs, you'll find two additional bedrooms, a bathroom, and useful eaves storage. Outside, the home is complemented by expansive front and rear gardens, a garage, and a driveway offering off-road parking for up to two vehicles.



- Highly Sought-After Location
- Detached Chalet Bungalow
- Four Bedrooms
- Conservatory & Dining Room
- Ground Floor Shower Room & First Floor Bathroom
- Generous Plot of Around 1/4 Acre (STMS)
- Potential to Extend or Develop (STPP)
- Just Moments From the Seafront & Town Centre
- Garage & Off-Road Parking

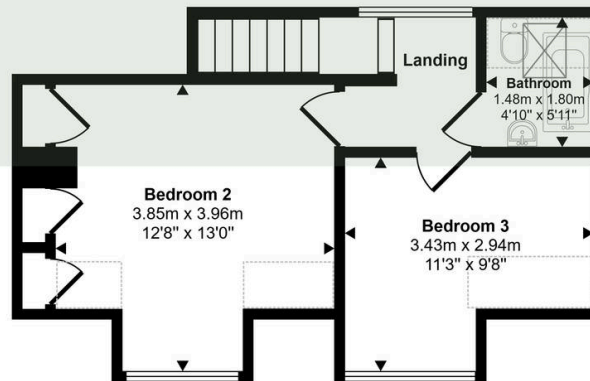


Approx Gross Internal Area  
133 sq m / 1435 sq ft



Ground Floor  
Approx 101 sq m / 1086 sq ft

MILLERS  
ESTATE AGENTS, LETTINGS  
& PROPERTY MANAGEMENT



First Floor  
Approx 32 sq m / 348 sq ft

Denotes head height below 1.5m

This floorplan is only for illustrative purposes and is not to scale. Measurements of rooms, doors, windows, and any items are approximate and no responsibility is taken for any error, omission or mis-statement. Icons of items such as bathroom suites are representations only and may not look like the real items. Made with Made Snappy 360.

