



17 Elsworth Street Leeds



2 Bedroom House - Terraced £125,000

69 Lower Wortley Road
Wortley
Leeds
West Yorkshire
LS12 4SL
Tel: 0113 231 1033
Fax: 0113 203 8333

Web Site
www.kathwells.com

email
sales@kathwells.com

17 Elsworth Street, Leeds, West Yorkshire, LS12 2JS

GROUND FLOOR:

Hallway:

Access via a part glazed front entrance door, stairs rising to the first floor

Living Room:

Double glazed window, central heating radiator

Fitted Dining Kitchen:

Double glazed windows, an external door giving access to the rear garden, a range of fitted wall, drawer & base cabinets, work surfaces, an inset stainless steel sink and drainer, gas cooker point, plumbing for an automatic washing machine, space for a fridge / freezer, under-stairs storage area

FIRST FLOOR:

Landing:

Access to the first floor accommodation, access to the loft space

Bedroom One:

Double glazed window, central heating radiator, ample space for a range of bedroom furniture

Bedroom Two:

Double glazed window, central heating radiator

Bathroom / WC:

Double glazed window, a white suite comprising of a panelled bath with a shower screen and electric shower, wash basin, low flush WC

TO THE OUTSIDE:

Gardens:

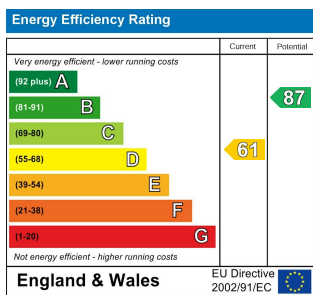
An enclosed rear garden

EPC Link:

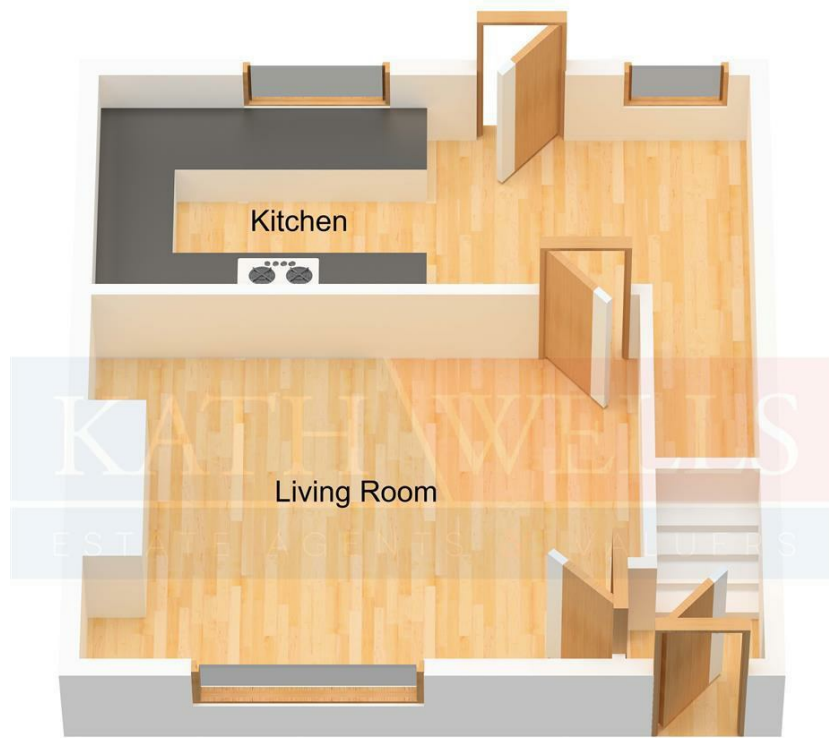
<https://find-energy-certificate.service.gov.uk/energy-certificate/0115-3036-0204-5204-8204>

Council Tax Rating & EPC Rating:

Council Tax Rating: A / EPC Rating: D



Floor Plan



Ground Floor
Approx. 27.90 sqm.
(301.00 sqft.)



First Floor
Approx. 28.20 sqm.
(303.00 sqft.)