

2 Castle Ings Close Leeds



3 Bedroom Bungalow - Dormer Semi Detached £199,995

69 Lower Wortley Road
Wortley
Leeds
West Yorkshire
LS12 4SL
Tel: 0113 231 1033
Fax: 0113 203 8333

Web Site
www.kathwells.com

email
sales@kathwells.com

2 Castle Ings Close, New Farnley, Leeds, West Yorkshire, LS12 5ED

Fitted Kitchen:

GROUND FLOOR:

Entrance Dining Room:



Access via a part glazed side entrance door, stairs rising to the first floor, central heating radiator, double glazed window

Living Room:



Double glazed window, a fireplace with an inset coal effect living flame gas fire, central heating radiator, television point

Bedroom One:



Double glazed window, central heating radiator, a range of fitted wardrobes and storage



Double glazed window, a fitted range of wall, drawer and base units, work surfaces, Integral Kitchen Appliances (automatic washing machine / dryer, fridge / freezer, fan assisted electric oven / grill, electric hob, extractor hood), stainless steel sink and drainer, central heating radiator

Shower Room / WC:



Double glazed window; a fully tiled shower room comprising of a glazed shower cubicle with shower, low flush WC, wash basin, inset ceiling lights, central heating radiator

FIRST FLOOR:

Landing:

Access to the first floor accommodation. Access to the loft space (possibility to convert subject to planning and building regulations)

Bedroom Two:



Double glazed window, a range of fitted wardrobes / storage, central heating radiator

Bedroom Three:



Double glazed window, a range of fitted wardrobes / storage, central heating radiator

TO THE OUTSIDE:



Gardens:



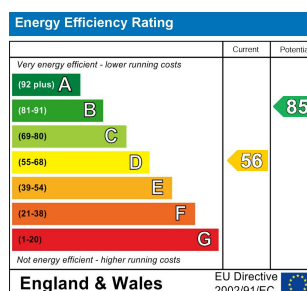
Gardens to the front and rear; the rear garden benefits from having a lawn and a seating area; the front garden has a lawn and planted beds

Garage / Off Street Parking:

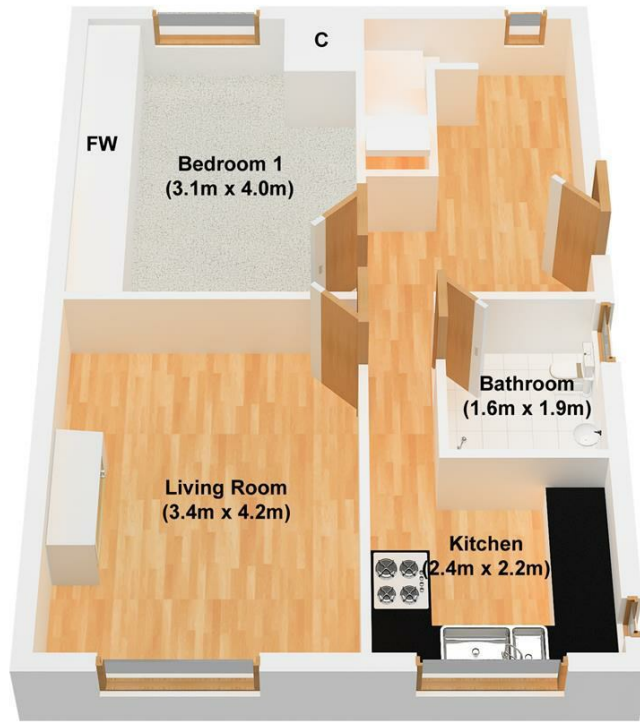
A driveway provides useful off street parking and access to a single garage. The garage has a workshop area to the rear.

EPC Link:

<https://find-energy-certificate.service.gov.uk/energy-certificate/4720-2273-0069-3009-0473>



Ground Floor



First Floor

