



12 Park Drive Leeds



2 Bedroom Apartment £149,995

69 Lower Wortley Road
Wortley
Leeds
West Yorkshire
LS12 4SL
Tel: 0113 231 1033
Fax: 0113 203 8333

Web Site
www.kathwells.com

email
sales@kathwells.com

12 Park Drive, New Farnley, Leeds, West Yorkshire, LS12 6JB

COMMUNAL ENTRANCE:

Access via a communal entrance with an intercom entry system, stairs to the upper floors

Entrance Private Hallway:

Access via a front entrance door, access to the accommodation, central heating radiator

Living Room & Dining Area::



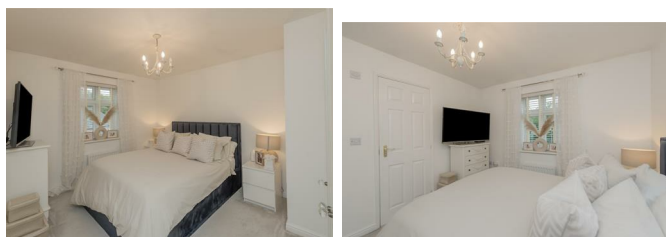
Double glazed windows, television point, central heating radiator, ample space for sofas and a dining table and chairs, semi open plan to the fitted kitchen

Fitted Kitchen:



Double glazed window, a modern range of fitted wall, drawer & base units, work surfaces, built under electric oven / grill, gas hob with an extractor above, space for a fridge / freezer, plumbing for a dishwasher, integral automatic washing machine, central heating radiator

Bedroom One:



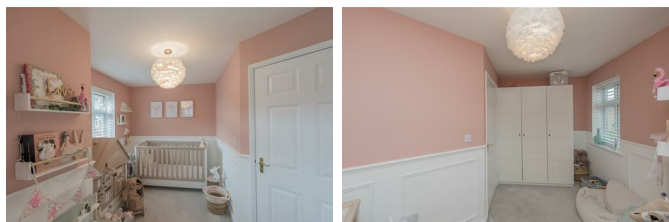
Double glazed window, central heating radiator, a range of fitted wardrobes providing useful storage and hanging space

En Suite Shower Room / WC:



A modern white suite comprising of a glazed shower cubicle with shower, wash basin, low flush WC, central heating radiator, extractor fan

Bedroom Two:



Double glazed window, central heating radiator, ample space for a range of bedroom furniture

Bathroom / WC:



A modern white suite comprising of a paneled bath, wash basin, low flush WC, central heating radiator, modern tiling

TO THE OUTSIDE:



Communal Gardens:

Communal gardens surround the apartment block

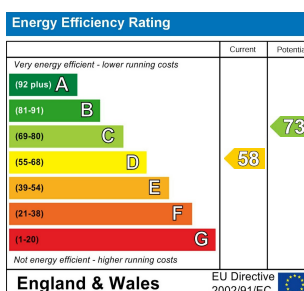
Parking Space:



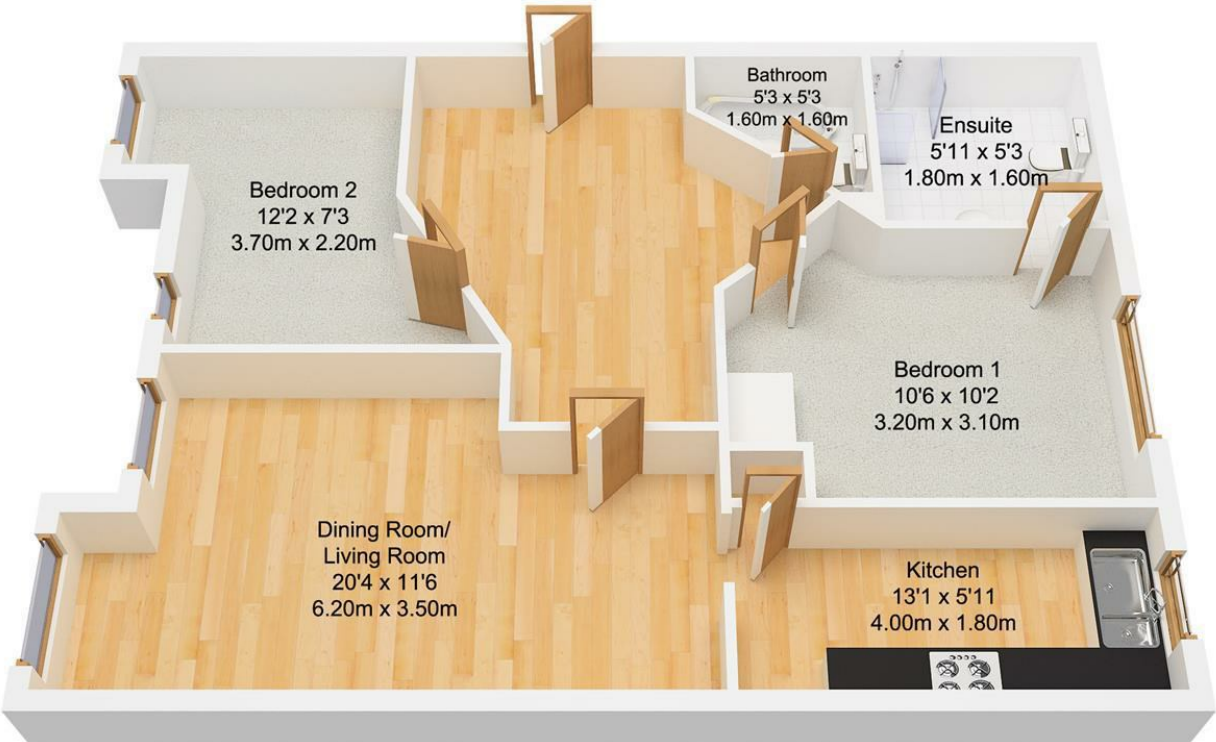
The property benefits from having allocated parking and use of guest parking spaces

EPC Link:

<https://find-energy-certificate.service.gov.uk/energy-certificate/2050-4361-8070-0202-0721>



Floor Plan



Ground Floor
Approx. 72.25 sqm.
(777.69 sqft.)