



11 Park Drive Leeds



2 Bedroom Apartment £137,500

69 Lower Wortley Road
Wortley
Leeds
West Yorkshire
LS12 4SL
Tel: 0113 231 1033
Fax: 0113 203 8333

Web Site
www.kathwells.com

email
sales@kathwells.com

11 Park Drive, New Farnley, Leeds, West Yorkshire, LS12 6JB

Bedroom One:
15'01" x 12'00"



Double glazed window to the rear elevation with fitted blinds, fitted wardrobes providing useful storage space, central heating radiator, television aerial / SKY and telephone connection point

Communal Entrance:

Staircase leading to the apartment

Entrance Private Hallway:

Built in storage cupboard, central heating radiator

Dining / Living Room:

15'01" x 12'03"



Double glazed window to the front elevation with fitted blinds, television aerial / SKY / telephone connection points, central heating radiator, access to the fitted kitchen

Fitted Kitchen:

10'06" x 7'05"



Double glazed window to the rear elevation with fitted blinds, a range of modern fitted wall, drawer and base units with complimentary work surfaces, mosaic tiling to the splashbacks, stainless steel sink and drainer with a mixer tap, integrated washer dryer, fridge freezer, built in electric fan assisted oven, four ring gas hob with extractor fan over, central heating radiator, built in storage cupboard

En-suite:

A modern three piece suite in white comprising of a shower cubicle, a wash basin and a WC, central heating radiator, extractor fan

Bedroom Two:

10'04" x 9'00"

Double glazed window to the front elevation with fitted blinds, central heating radiator

Bathroom / WC:

7'03" x 7'02"



A modern three piece suite in white comprising of a panelled bath, a wash basin and a low flush WC, central heating radiator, extractor fan

TO THE OUTSIDE:



Parking:

There is an allocated parking space providing useful off street parking.

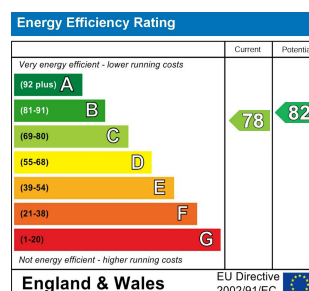
Communal Gardens:



There are communal gardens to the rear of the property

EPC LINK:

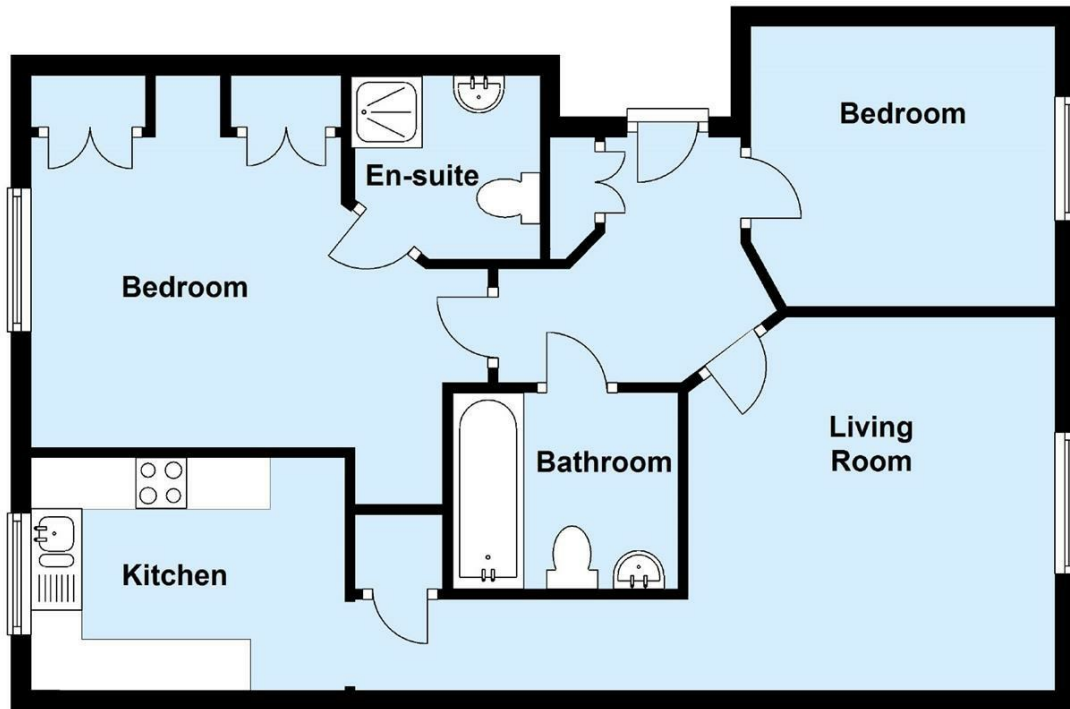
<https://find-energy-certificate.service.gov.uk/energy-certificate/2060-5462-3040-4204-6705>



Floor Plan

Floor Plan

Approx. 66.2 sq. metres (712.1 sq. feet)



Total area: approx. 66.2 sq. metres (712.1 sq. feet)