



14 Sutherland Court Gardens, Cromer , Norfolk, NR27 0DA

Guide Price £265,000

- Stunning first floor apartment
- Two Double bedrooms
- Modern kitchen breakfast room
- EPC Rating: TBC

This stunning two bedroom apartment lies in a quiet sought after residential area of the popular seaside town of Cromer. The property is within under half a mile from all the amenities, transport links, shops and of course stunning beaches Cromer has to offer.
VIEWING HIGHLY RECOMMENDED



Property Description

OVERVIEW

This beautiful apartment is like a "show home" throughout and viewing is highly recommended. This first floor apartment is extremely spacious and consists of a light entrance hall with doors off to a modern fitted kitchen breakfast room, large lounge, dining room, doakroom, two double bedrooms with the master boasting an ensuite. There is a garage and parking to the outside.

HALLWAY

Fitted carpets, radiator with cover, built in cupboard designed by Sharps. Entry phone system, loft hatch and ceiling rose. Doors off.

KITCHEN/BREAKFAST ROOM

Double glazed window to the front wall and base units with solid wood worktops, part tiled walls, integrated fridge freezer, washing machine and dishwasher, Bosch oven and hob along with space for microwave. Tiled floor.

LOUNGE

Spacious lounge with TV point, radiator, fireplace with marble hearth and gas fire, Sharps built in shelving and cupboards, and Juliette balcony and double glazed window and door to the rear.

DINING ROOM

Archway from lounge to dining room carpets and radiator.

SHOWER ROOM

This shower room consists of a low level WC, wash hand basin, shower cubide, wall mounted radiator, tiled floor, tiled walls, ceiling light.

MASTER BEDROOM

Beautiful master bedroom with double glazed window to the front, wall mounted radiator, fitted carpets ceiling light and wardrobes designed by Sharps.

EN SUITE

Immaculate shower room with built in cupboard, low level WC,





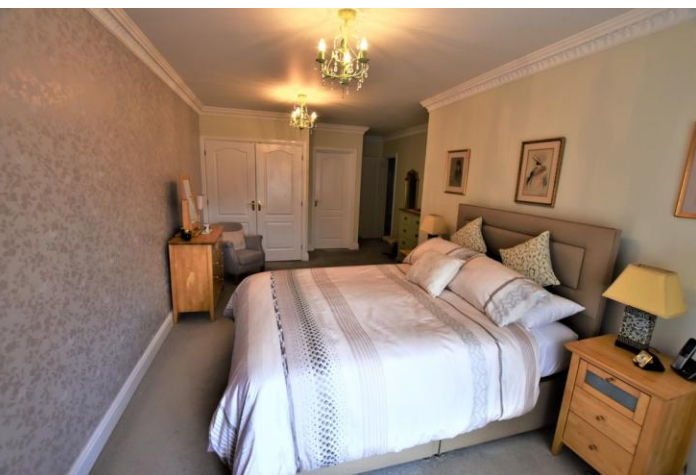
wash hand basin with built in vanity, cupboard, walk in corner shower, wall mounted radiator, tiled walls and floor and spotlights.

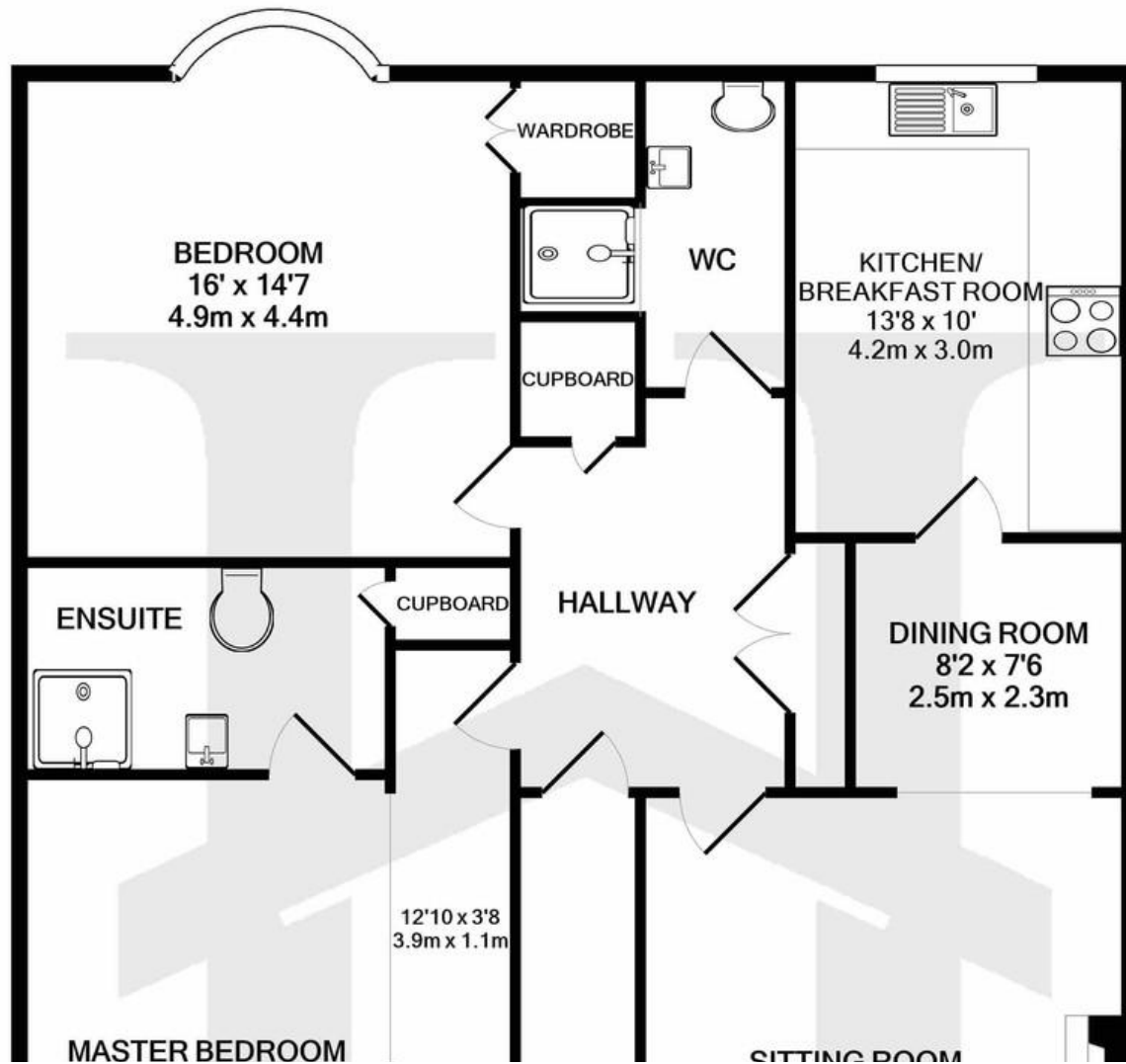
BEDROOM TWO

Double glazed window to rear, built in wardrobes, wall mounted radiator, ceiling lights.

OUTSIDE

Communal grounds and garden, garage with up and over door, power and light with an additional parking space.





%epcGraph_c_1_334%

15 West Street, Cromer, Norfolk,
NR27 9HZ

☎ 01263 511111
 ✉ cromer@henleysea.co.uk
henleysea.co.uk

Agents Note: Whilst every care has been taken to prepare these sales particulars, they are for guidance purposes only. All measurements are approximate and for general guidance purposes only and whilst every care has been taken to ensure their accuracy, they should not be relied upon and potential buyers are advised to recheck the measurements.