



30 Norwich Road, Cromer, NR27 0HF

Guide Price £325,000

- Chain Free
- Detached Bungalow
- Two bedrooms
- EPC Rating: TBC



Property Description

AREA

Cromer has a good array of independent shops and national supermarkets. There are also many restaurants, cafes and public houses in the town and close by. Cromer and District Hospital, dental surgeries, a GP surgery, an infant, junior and academy school within the town. The region's historic capital, Norwich, is just over 20 miles away. Norwich is the main commercial, cultural, retail, entertainment and transport link for the county. Cromer has railway links to Norwich, the Broads and its neighbouring town Sheringham.

KITCHEN

Double glazed window to the side and rear and door to access the rear of the property. Wall and base units, tiled splashback tiles and worktops. Built in oven and grill and built in gas hob. Integrated dishwasher, sink drainer and space and plumbing for washing machine.

LOUNGE - DINER

Windows to the front and door to the front. Built in window seat, radiators, carpet exposed beam and built in fireplace with gas fire.

HALLWAY

Door to the front, radiator, carpets, loft access and landing off

BATHROOM

Window to the side, fully tiled, shower cubicle, WC, enclosed wash hand basin with cupboard, heated towel rail and corner bath.

BEDROOM

Windows to the side, carpets, radiator and built in wash hand basin with built in cupboard.

BEDROOM

Window to the side, carpets, radiator and built in wardrobe.

OUTSIDE

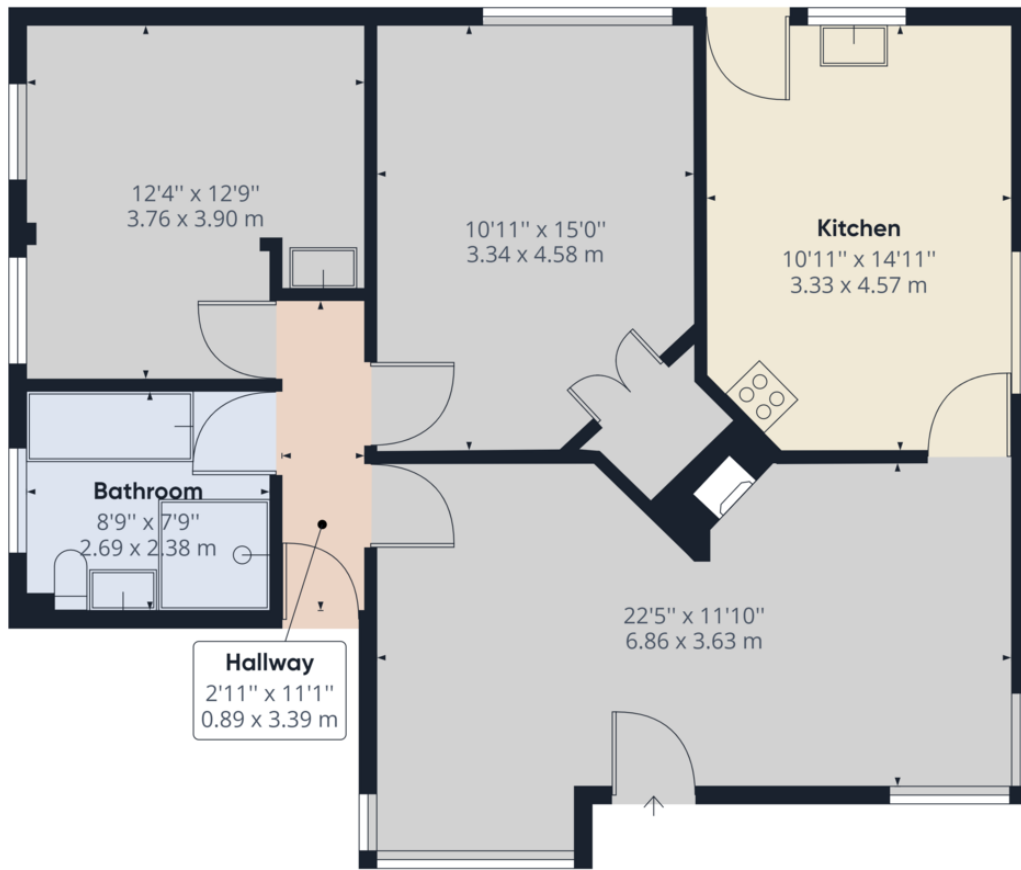
Wrap around low maintenance garden with paved areas and





shrubs and borders. There is a driveway and a detached driveway.





Approximate total area⁽¹⁾
869.18 ft²
80.75 m²

(1) Excluding balconies and terraces

While every attempt has been made to ensure accuracy, all measurements are approximate, not to scale. This floor plan is for illustrative purposes only.

GIRAFFE360

%epcGraph_c_1_334%

15 West Street, Cromer, Norfolk,
NR27 9HZ

☎ 01263 511111
✉ cromer@henleysea.co.uk
henleysea.co.uk

Agents Note: Whilst every care has been taken to prepare these sales particulars, they are for guidance purposes only. All measurements are approximate and for general guidance purposes only and whilst every care has been taken to ensure their accuracy, they should not be relied upon and potential buyers are advised to recheck the measurements