



5 Oakdale Park

Pool In Wharfedale, Otley, LS21 1LA

Guide Price £600,000



5 Oakdale Park



Description

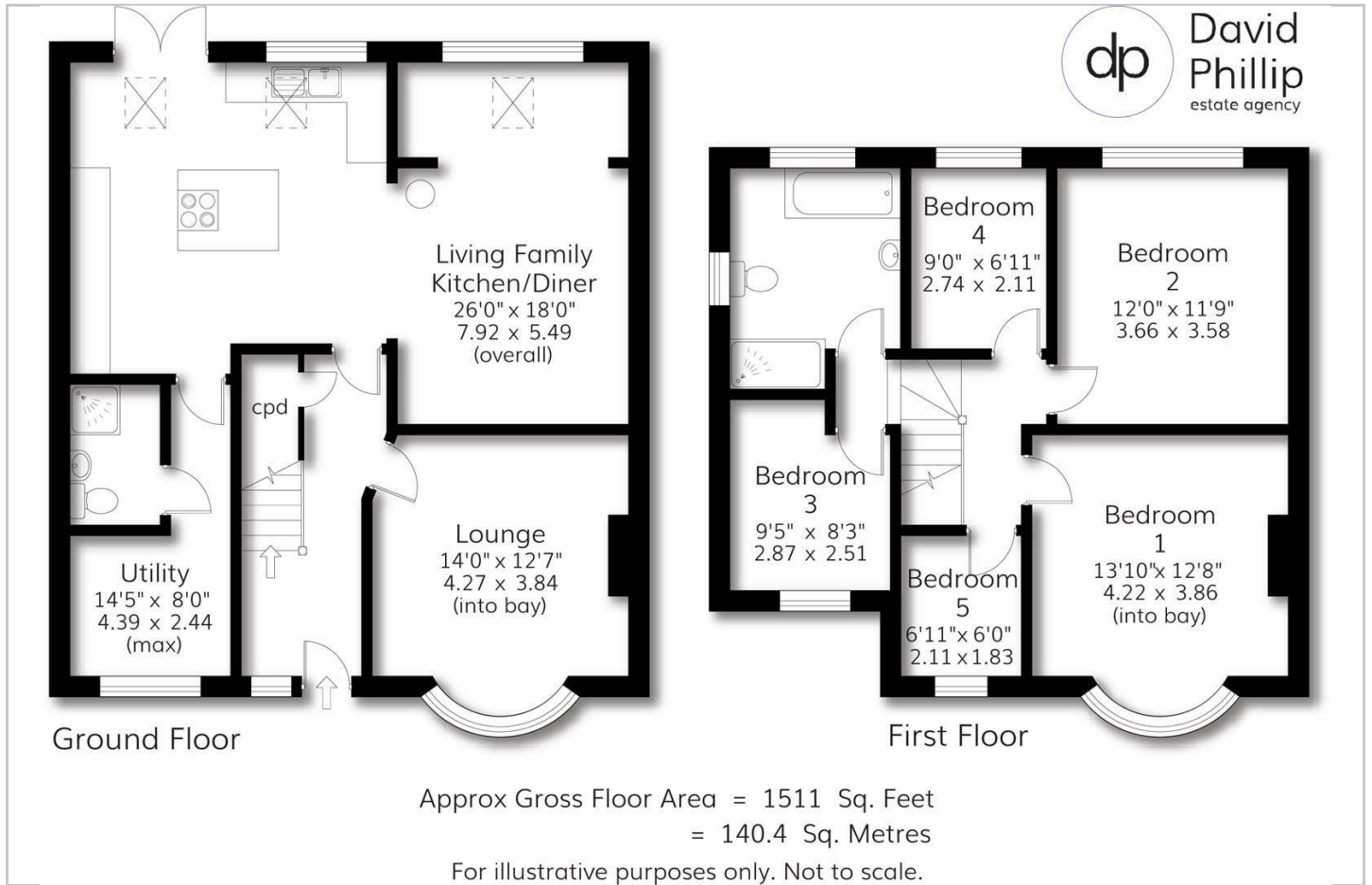
A distinctive looking and spacious five bedroom semi-detached family residence with a lovely private rear garden tucked away towards the end of a small private cul-de-sac.

- An Immaculately Presented Five Bedroom Semi-Detached House
- Wonderful Kerb Appeal with a Delightful Private Rear Garden
- Tucked Away Towards the End of a Small Private Cul-de-Sac
- Energy Performance Certificate (EPC) with C Rating
- Tastefully Re-Configured and Spacious Flexible Ground Floor Layout
- Ample On Site parking for a number of Cars
- Popular Village location Close to Local Amenities
- Leeds City Council Tax Band D





Floor Plan



Area Map



Viewing

Please contact our David Phillip Estate Agents Office on 01134 676 400 if you wish to arrange a viewing appointment for this property or require further information.

These particulars, whilst believed to be accurate are set out as a general outline only for guidance and do not constitute any part of an offer or contract. Intending purchasers should not rely on them as statements of representation of fact, but must satisfy themselves by inspection or otherwise as to their accuracy. No person in this firm's employment has the authority to make or give any representation or warranty in respect of the property.

86 Leeds Road, Bramhope, Leeds, West Yorkshire, LS16 9AN
 Tel: 01134 676 400 Email: info@davidphillip.co.uk <https://www.davidphillip.co.uk>

Energy Efficiency Graph

