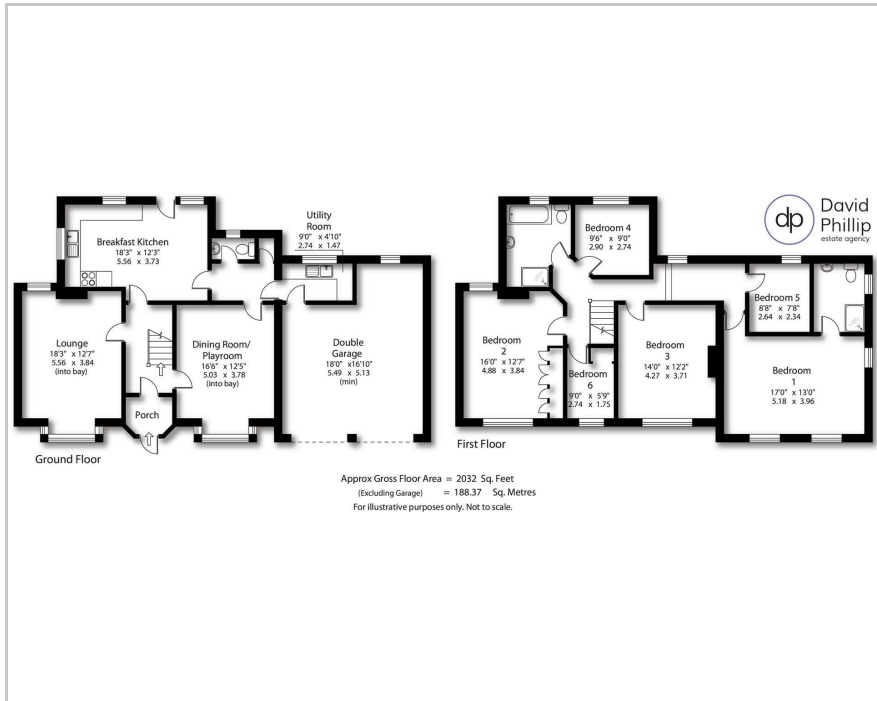




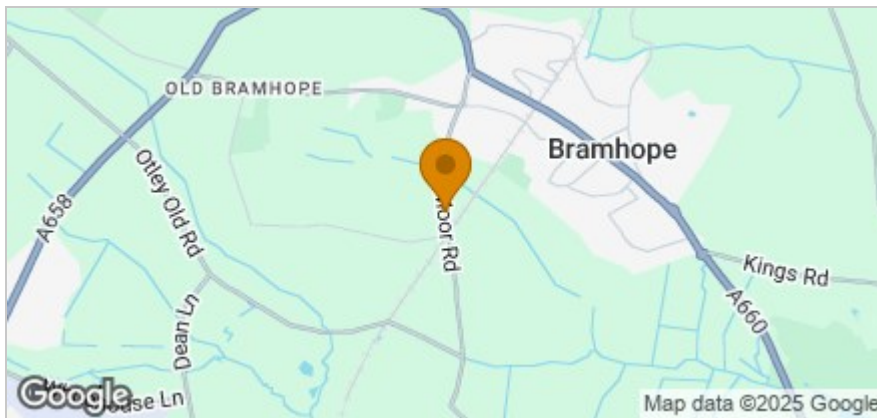
Moorside Moor Road, Leeds, LS16 9HH

Guide Price £870,000

## Floor Plan



## Area Map



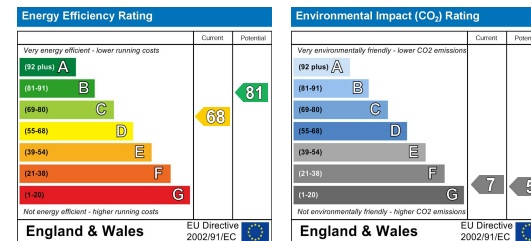
## Accommodation

- A Very Fine Detached Family House
- Optional Six Bedrooms and Two Bathrooms
- Two Reception Rooms and Spacious Breakfast Kitchen
- Separate Utility Room and Downstairs Cloaks/WC
- Private South/ West Facing Lawned Garden with Patio
- Internally Accessed Double Garage with Two Electric Doors
- Sought After Village Fringe Location
- Energy Performance Certificate (EPC) Rating D
- Leeds City Council Tax Band C

## Viewing

Please contact our David Phillip Estate Agents Office on 01134 676 400 if you wish to arrange a viewing appointment for this property or require further information.

## Energy Efficiency Graph



These particulars, whilst believed to be accurate are set out as a general outline only for guidance and do not constitute any part of an offer or contract. Intending purchasers should not rely on them as statements of representation of fact, but must satisfy themselves by inspection or otherwise as to their accuracy. No person in this firm's employment has the authority to make or give any representation or warranty in respect of the property.