

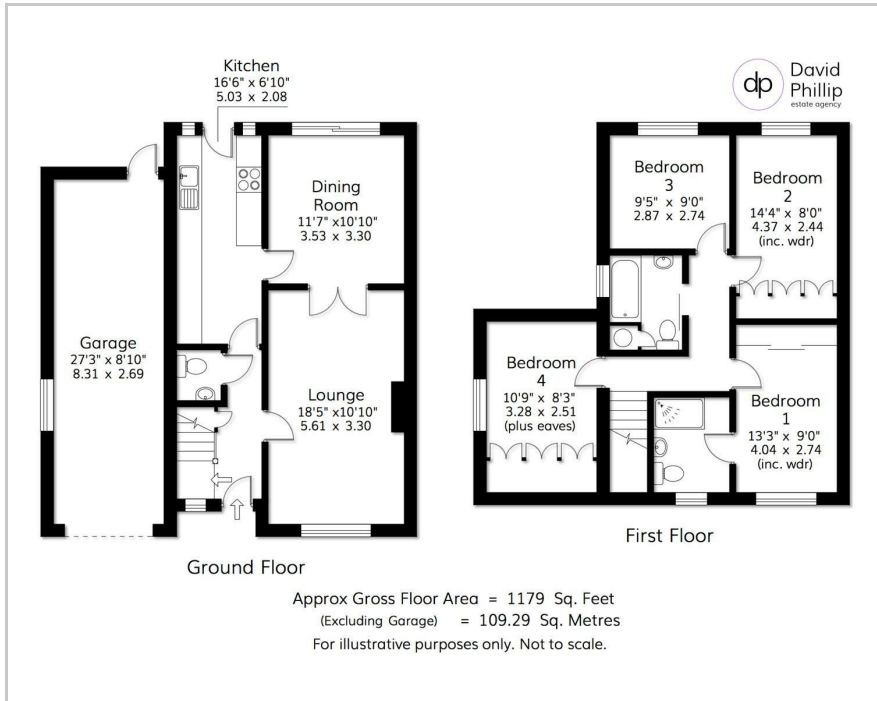


10 Wynmore Crescent, Leeds, LS16 9DH

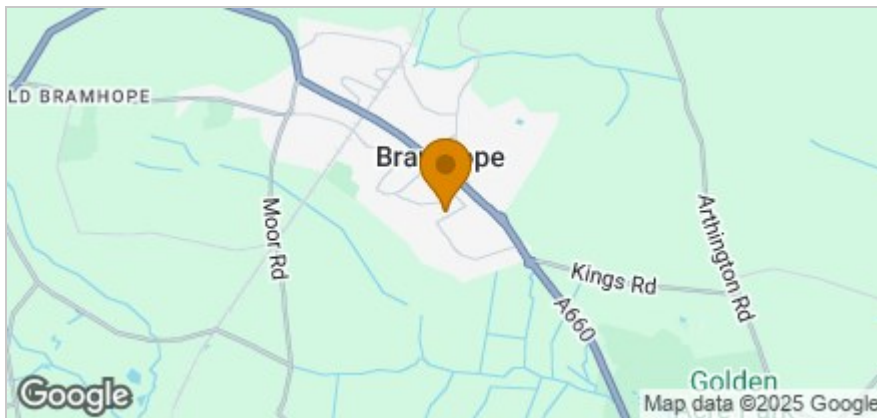
Guide Price £575,000



## Floor Plan



## Area Map



## Accommodation

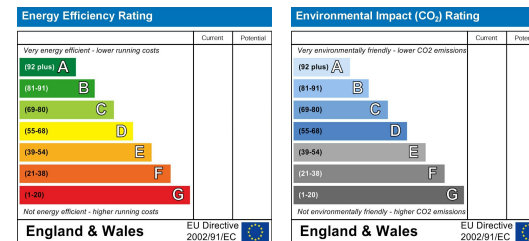
- An Attractively Presented Detached Family House
- Offering Four Bedrooms and Two Bathrooms
- Front Facing Lounge, Separate Rear Dining Room
- Slightly elevated Enjoying an Open Aspect
- Garage, Double Width Drive and Private Rear Garden
- Popular Residential Area and Local Amenities Nearby
- Awaiting EPC
- Leeds City Council Tax Band E



## Viewing

Please contact our David Phillip Estate Agents Office on 01134 676 400 if you wish to arrange a viewing appointment for this property or require further information.

## Energy Efficiency Graph



These particulars, whilst believed to be accurate are set out as a general outline only for guidance and do not constitute any part of an offer or contract. Intending purchasers should not rely on them as statements of representation of fact, but must satisfy themselves by inspection or otherwise as to their accuracy. No person in this firm's employment has the authority to make or give any representation or warranty in respect of the property.