

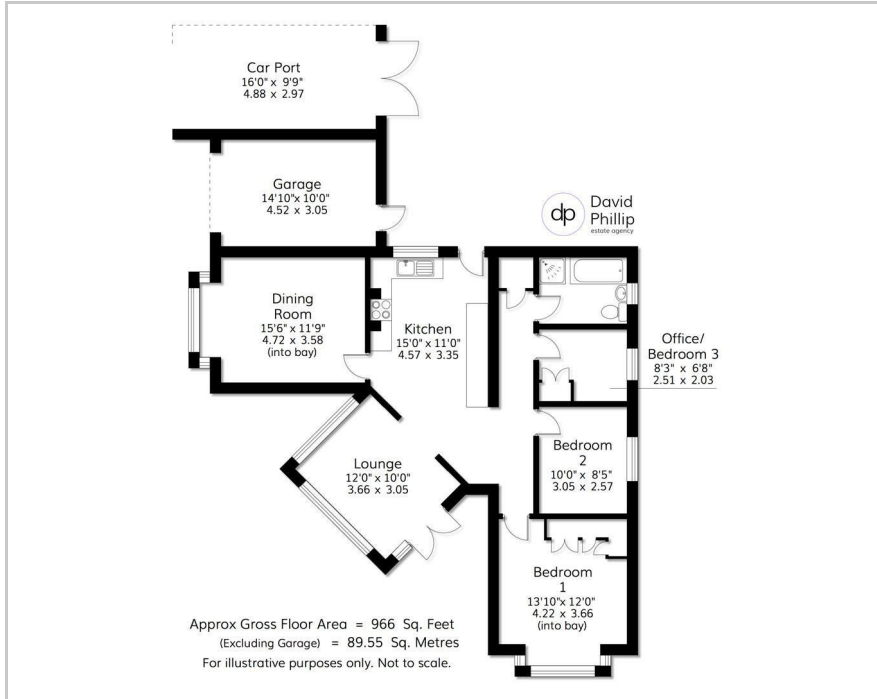


The Haven Quarry Farm Road, Pool in Wharfedale, LS21 3BT

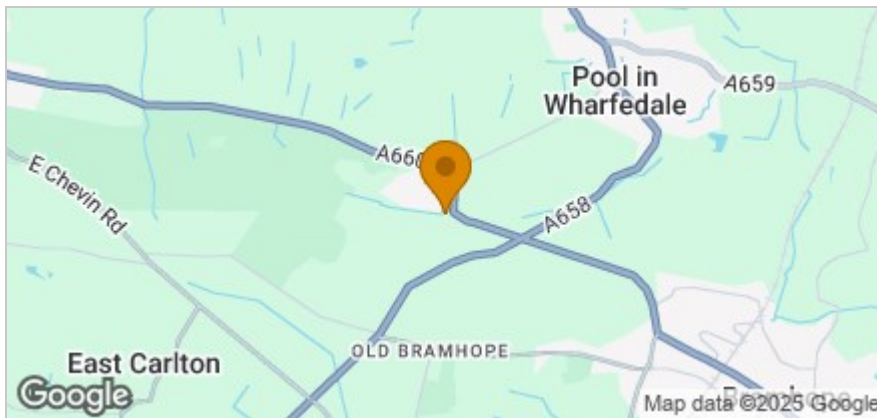
Price Guide £425,000

 2  1  2  D

## Floor Plan



## Area Map



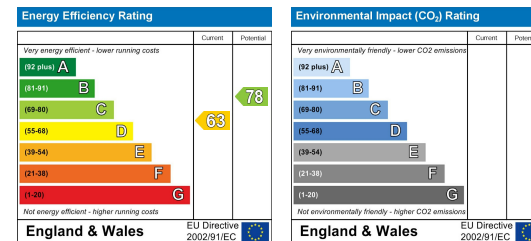
## Accommodation

- A Delightfully Situated Detached Bungalow
- Offering Optional Two/Three Bedrooms
- Lovely Semi-Rural Setting Enjoying Superb Views
- Open Plan Kitchen, Lounge, Separate Dining Room
- Garage, Carport and Ample On-Site Parking
- Hamlet of Upper Old Pool Bank, Access onto Otley Chevin
- Energy Performance Certificate (EPC) Rated D
- Leeds City Council Tax Band E

## Viewing

Please contact our David Phillip Estate Agents Office on 01134 676 400 if you wish to arrange a viewing appointment for this property or require further information.

## Energy Efficiency Graph



These particulars, whilst believed to be accurate are set out as a general outline only for guidance and do not constitute any part of an offer or contract. Intending purchasers should not rely on them as statements of representation of fact, but must satisfy themselves by inspection or otherwise as to their accuracy. No person in this firm's employment has the authority to make or give any representation or warranty in respect of the property.