



26 Wilberforce Road

, Leicester, LE3 0GT

Offers Over £225,000

This four-bedroom mid-terraced home is a fantastic opportunity for investors, as it has been granted permission to operate as a House in Multiple Occupation (HMO) under Article 4. The ground floor features a welcoming lounge, a functional kitchen, a shower room, and the first bedroom. Upstairs, you'll find three additional bedrooms. The property also boasts a private backyard and offers on-street parking. Situated in the lively city of Leicester, UK, this location is rich in history and cultural diversity. Residents can enjoy a variety of local amenities, including charming cafes, unique shops, and handy supermarkets, all just a short stroll away.

Viewing

Please contact our Berkley Leicester Office on 0116 2544755 if you wish to arrange a viewing appointment for this property or require further information.

- Ideal Investment
- Property meets Leicester City Council Selective Licensing Scheme.
- Let to four students until July 2025
- rental income of £16,640 per annum. tenants pay all utilities bills.
- Call us for more information
- No Chain

4 1 1 D

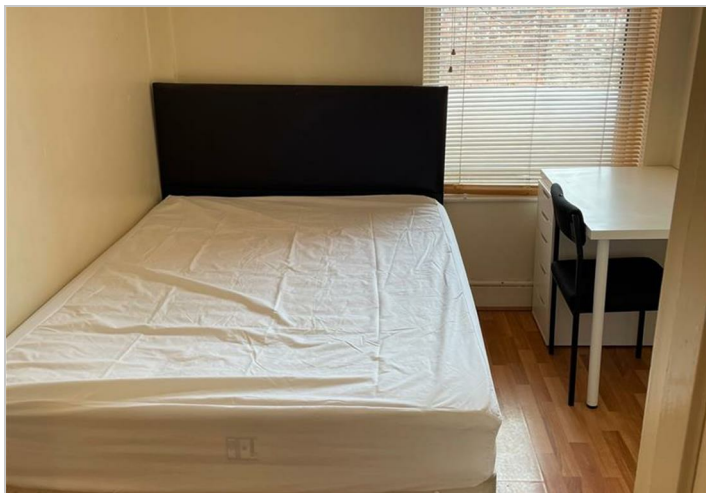
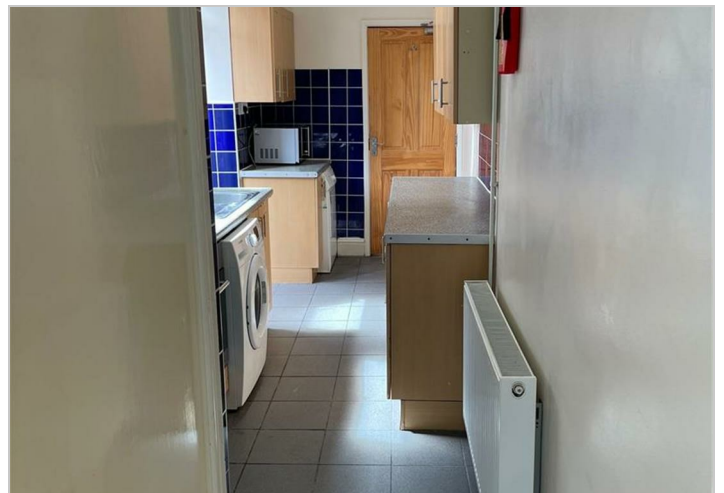
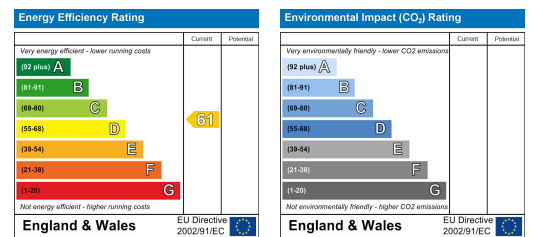
Floor Plan



Area Map



Energy Efficiency Graph



These particulars, whilst believed to be accurate are set out as a general outline only for guidance and do not constitute any part of an offer or contract. Intending purchasers should not rely on them as statements of representation of fact, but must satisfy themselves by inspection or otherwise as to their accuracy. No person in this firm's employment has the authority to make or give any representation or warranty in respect of the property.