



94 Forest House Lane

Leicester Forest East, Leicester, LE3 3NU

Asking Price £699,950

This executive modern five bedroom detached family home is situated on the sought-after Forest House Lane in Leicester Forest East. The property is beautifully presented and boasts a high specification, being built by David Wilson. The accommodation comprises a spacious entrance foyer, guest WC, generous lounge, conservatory, study, snug, and a kitchen with utility. On the first floor, there are five double bedrooms, with the master bedroom featuring an en-suite and dressing room. The second bedroom also has an en-suite, and there is a family shower room. Outside, the property offers a good-sized rear garden, ample off-road parking, and a double detached garage. Leicester Forest East is conveniently located approximately five miles west of the city centre, providing residents with excellent local amenities, including pubs, restaurants, and schools. The area is highly popular due to its proximity to the city centre, as well as its easy access to the M1/M69 motorway connections and major road links.

- FIVE DOUBLE BEDROOMS
- UNOVERLOOKED ASPECT
- MODERN FITTED BREAKFAST KITCHEN
- THREE BATHROOMS
- MASTER BEDROOM WITH EN-SUITE AND DRESSING ROOM
- LARGE ENTRANCE HALLWAY
- DETACHED DOUBLE GARAGE
- MUST BE VIEWED

Viewing

Please contact our Berkley Leicester Office on 0116 2544755 if you wish to arrange a viewing appointment for this property or require further information.

 5
  3
  4
  C

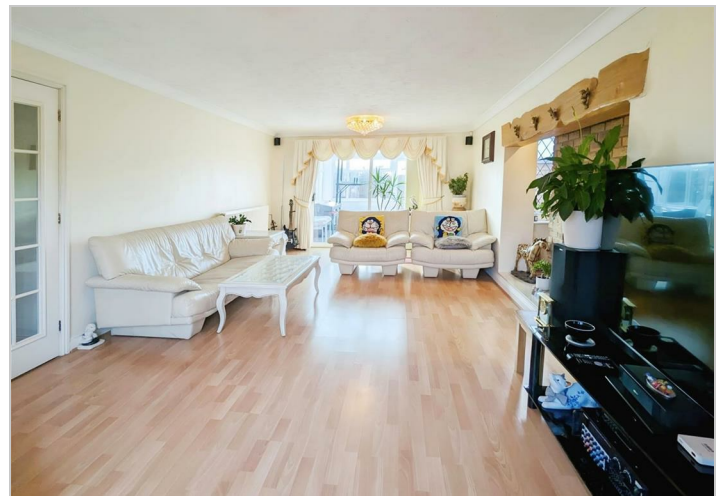
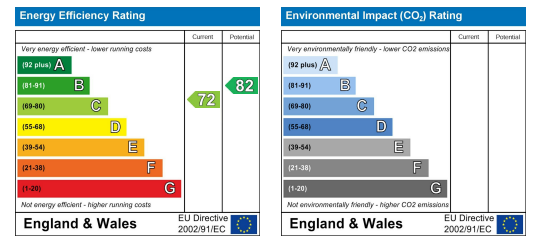
Floor Plan



Area Map



Energy Efficiency Graph



These particulars, whilst believed to be accurate are set out as a general outline only for guidance and do not constitute any part of an offer or contract. Intending purchasers should not rely on them as statements of representation of fact, but must satisfy themselves by inspection or otherwise as to their accuracy. No person in this firm's employment has the authority to make or give any representation or warranty in respect of the property.