



## 14 Denis Close

Western Park, Leicester, LE3 6DQ

Asking Price £140,000

A TWO BEDROOM MAISONETTE. The well presented first floor accommodation with underfloor heating offers entrance hall, lounge, re-fitted kitchen, two double bedrooms and bathroom. The property benefits from a garage to the rear, off road parking and garden.

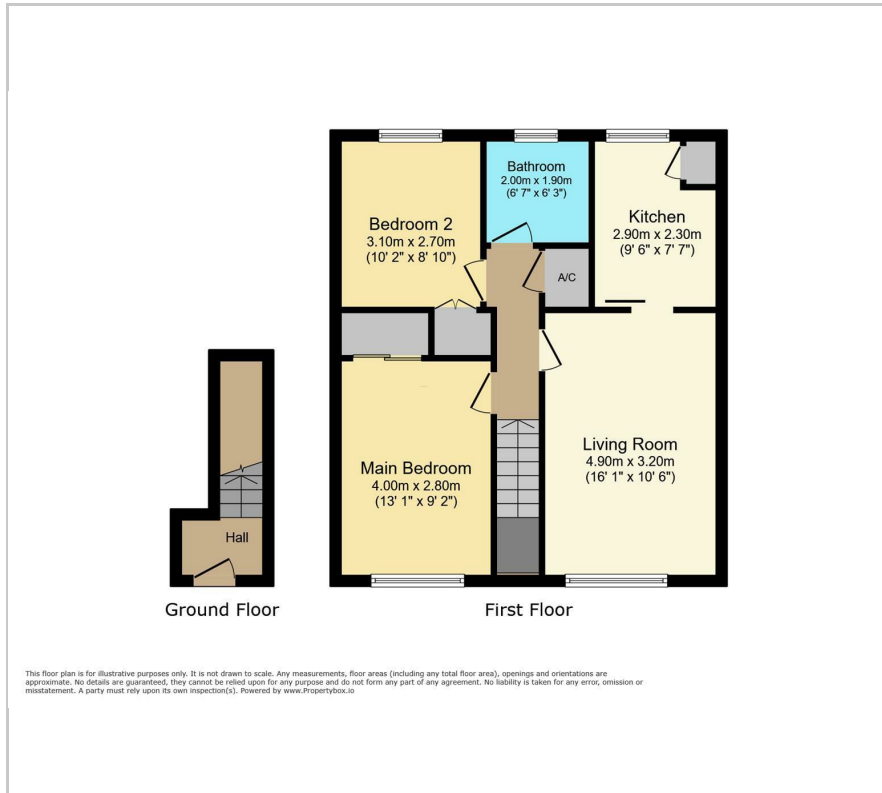
- 99 Year Lease from 2019
- Two Double Bedroom First Floor Flat
- Refitted Kitchen
- Cul-de-Sac Location
- uPVC Double Glazed Windows Throughout
- Ideal for FTB and Investors

### Viewing

Please contact our Berkley Leicester Office on 0116 2544755 if you wish to arrange a viewing appointment for this property or require further information.



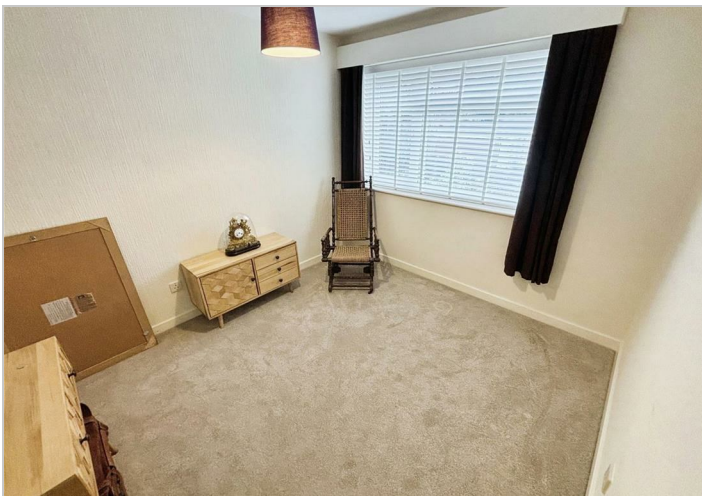
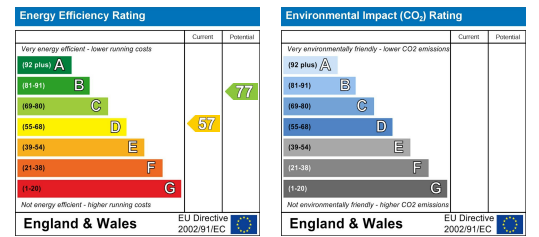
# Floor Plan



# Area Map



# Energy Efficiency Graph



These particulars, whilst believed to be accurate are set out as a general outline only for guidance and do not constitute any part of an offer or contract. Intending purchasers should not rely on them as statements of representation of fact, but must satisfy themselves by inspection or otherwise as to their accuracy. No person in this firm's employment has the authority to make or give any representation or warranty in respect of the property.