



6 Gaddesby Avenue

, Leicester, LE3 1BN

Offers Over £260,000

Spacious Three-Bedroom Semi-Detached Home on a Large Corner Plot – Prime Leicester Location

Nestled in a sought-after location close to Leicester city centre, this well-presented three-bedroom semi-detached property offers an excellent opportunity for families and professionals alike. Boasting a generous corner plot, the home benefits from a substantial driveway, providing ample off-road parking.

Upon entering, you are greeted by a spacious entrance hall, setting the tone for the light and airy accommodation throughout. To the front, a well-proportioned dining room enjoys plenty of natural light, making it an ideal space for entertaining or family meals. To the rear, a comfortable living room offers a relaxing retreat, with direct access to a charming conservatory, perfect for enjoying garden views year-round. The well-appointed kitchen is both functional and stylish, providing ample storage and workspace.

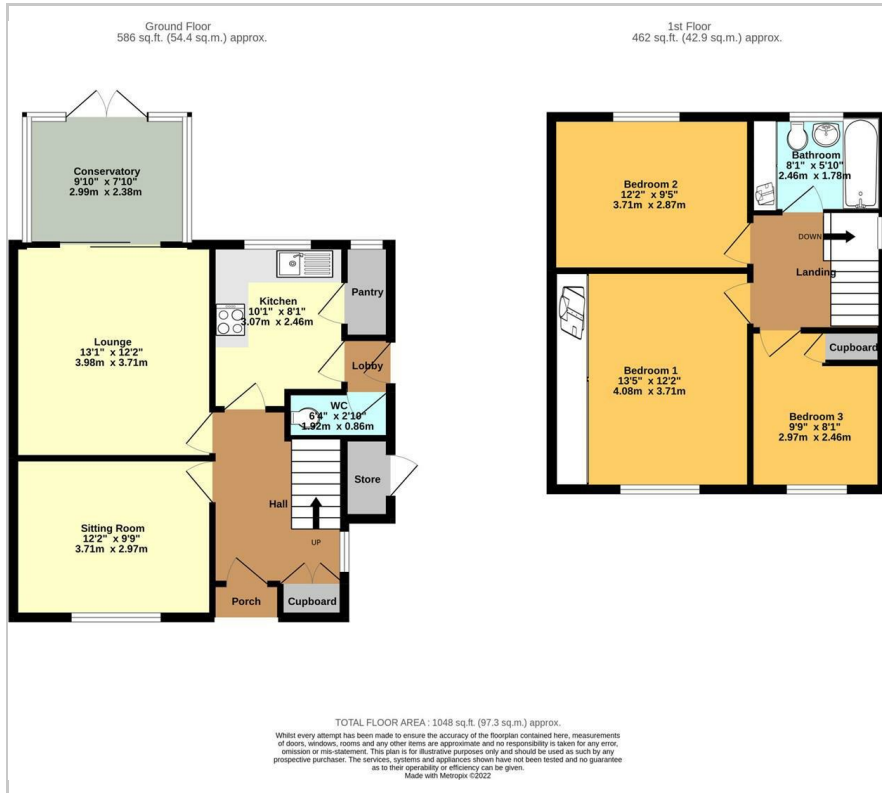
Upstairs, the property boasts three generous double bedrooms, each offering flexibility for modern living, whether as sleeping quarters, a home office, or a hobby space. The family bathroom is tastefully presented, complementing the home's overall appeal.

Viewing

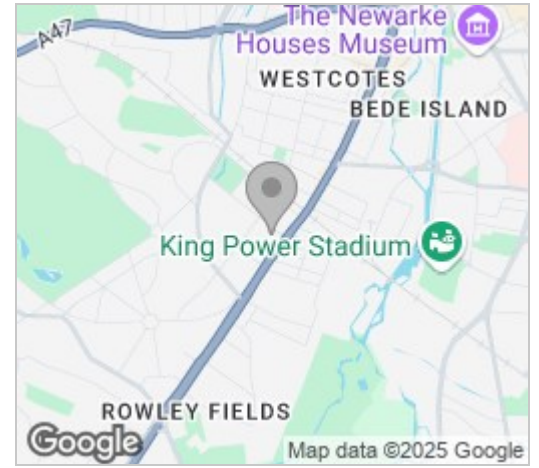
Please contact our Berkley Kibworth Office on 0116 2796161 if you wish to arrange a viewing appointment for this property or require further information.



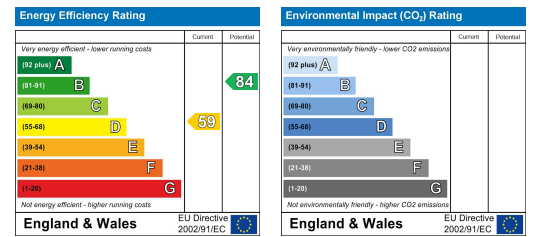
Floor Plan



Area Map



Energy Efficiency Graph



These particulars, whilst believed to be accurate are set out as a general outline only for guidance and do not constitute any part of an offer or contract. Intending purchasers should not rely on them as statements of representation of fact, but must satisfy themselves by inspection or otherwise as to their accuracy. No person in this firm's employment has the authority to make or give any representation or warranty in respect of the property.